


Correction

# **Correction: Rigiracciolo, D.C., et al., IGF-1/IGF-1R/FAK/YAP Transduction Signaling Prompts Growth Effects in Triple-Negative Breast Cancer (TNBC) Cells. *Cells* 2020, 9, 1010**

**Damiano Cosimo Rigiracciolo**<sup>1</sup>, **Nijiro Nohata**<sup>2</sup> , **Rosamaria Lappano**<sup>1</sup>, **Francesca Cirillo**<sup>1,3</sup>,  
**Marianna Talia**<sup>1</sup>, **Domenica Scordamaglia**<sup>1</sup>, **J. Silvio Gutkind**<sup>4,\*</sup> and **Marcello Maggiolini**<sup>1,\*</sup> 

<sup>1</sup> Department of Pharmacy, Health and Nutritional Sciences, University of Calabria, 87036 Rende, Italy; damianocosimo.rigiracciolo@unical.it (D.C.R.); rosamaria.lappano@unical.it (R.L.); francesca.cirillo@unical.it (F.C.); marianna.talia@unical.it (M.T.); scordamagliadomenica1@gmail.com (D.S.)

<sup>2</sup> MSD K.K. Tokyo 102-8667, Japan; nijiro.nohata@merck.com

<sup>3</sup> Department of Physics, University of Calabria, 87036 Rende, Italy

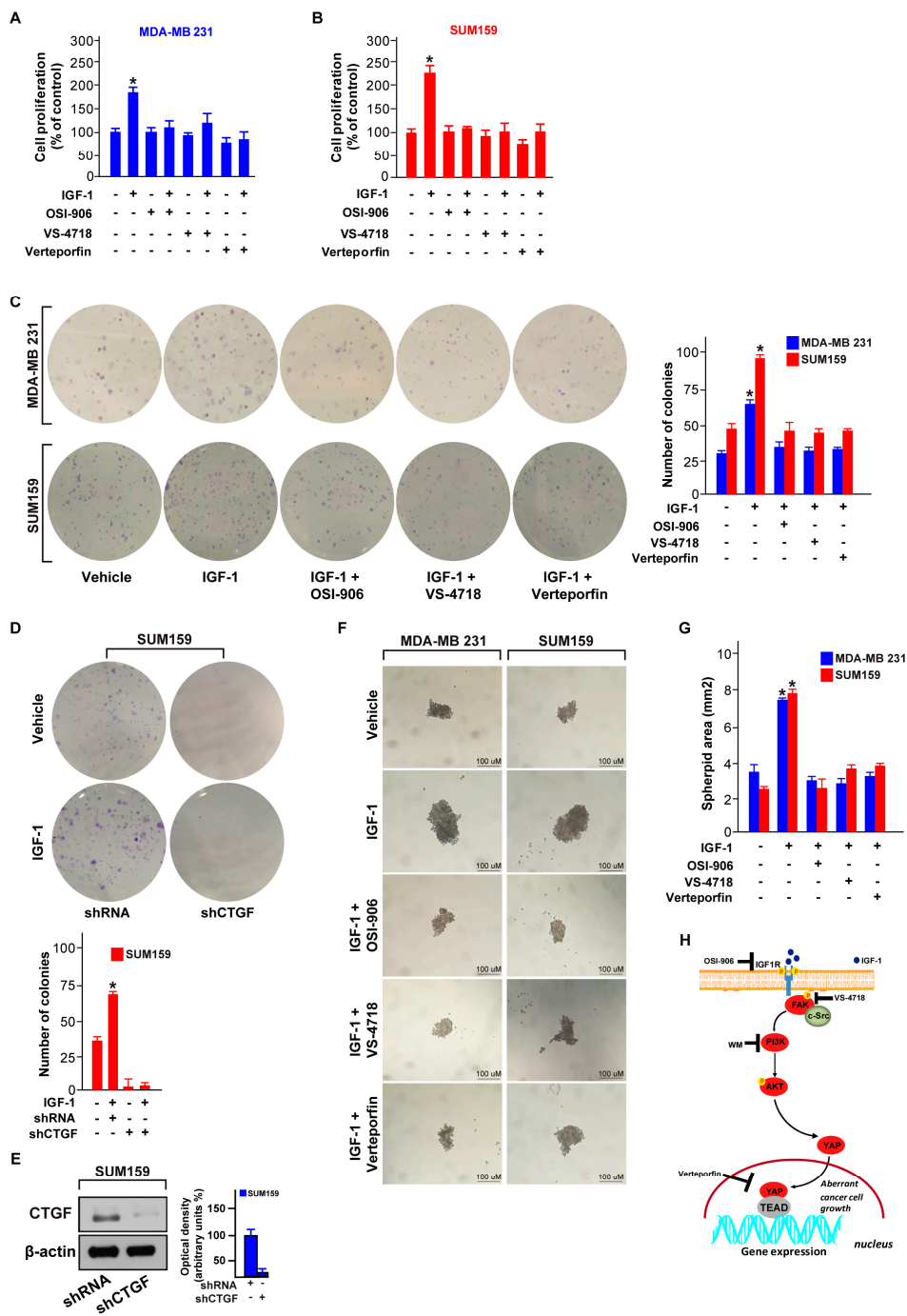
<sup>4</sup> Department of Pharmacology, Moores Cancer Center, University of California, San Diego, La Jolla, CA 92093, USA

\* Correspondence: sgutkind@ucsd.edu (J.S.G.); marcellomaggiolini@yahoo.it or marcello.maggiolini@unical.it (M.M.)

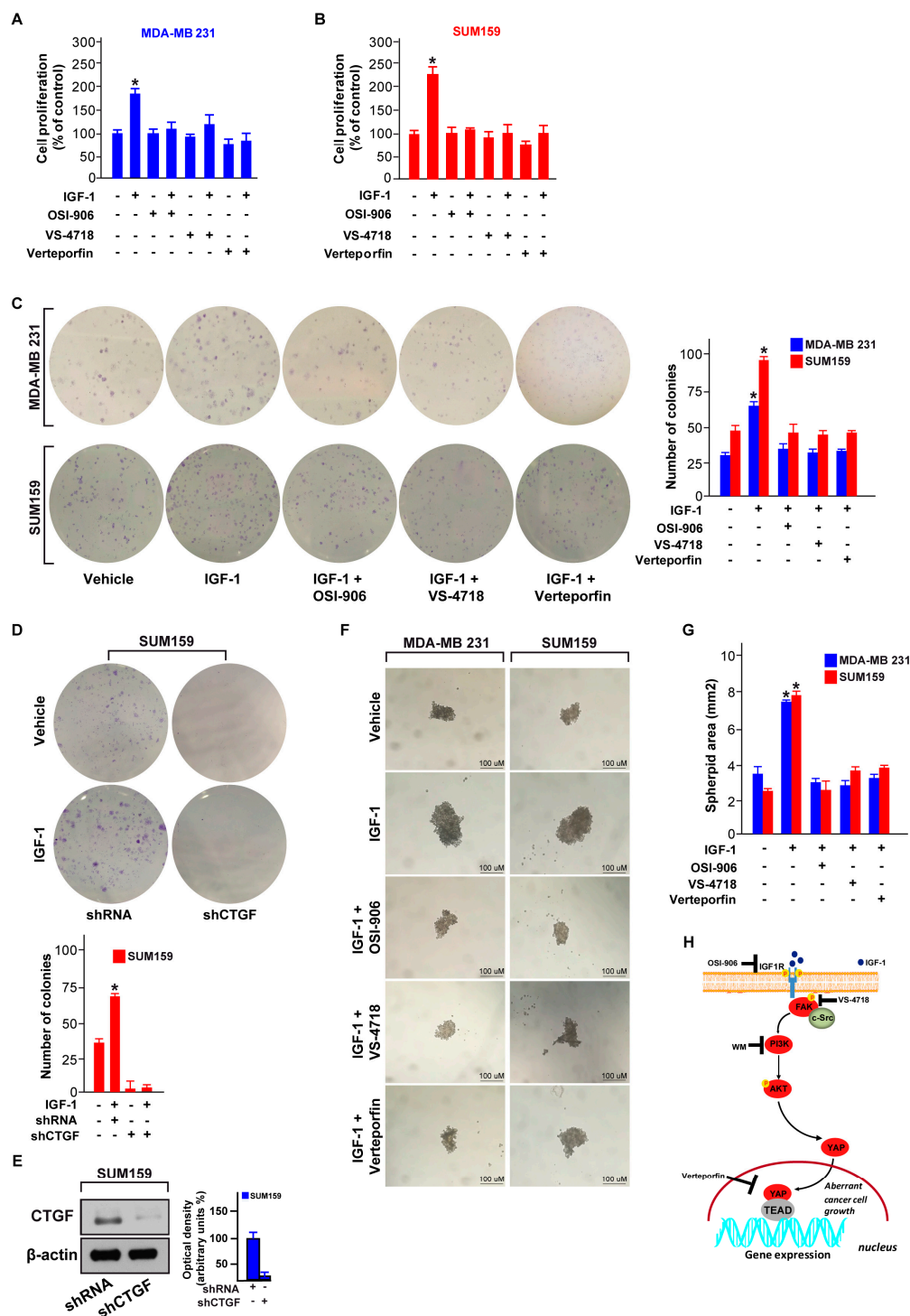
Received: 1 December 2020; Accepted: 2 December 2020; Published: 6 December 2020



The authors wish to make the following changes to their paper [1]. Due to the authors having made an error, the last panel of the MDA-MB 231 group of Figure 7C needs to be corrected. Figure 7 should be changed from:



to:



The authors apologize for any inconvenience caused and state that the scientific conclusions are unaffected. The original article has been updated. All changes have been reviewed and approved by the Academic Editors of *Cells*.

## References

1. Rigracciolo, D.C.; Nohata, N.; Lappano, R.; Cirillo, F.; Talia, M.; Scordamaglia, D.; Gutkind, J.S.; Maggiolini, M. IGF-1/IGF-1R/FAK/YAP Transduction Signaling Prompts Growth Effects in Triple-Negative Breast Cancer (TNBC) Cells. *Cells* **2020**, *9*, 1010.

**Publisher's Note:** MDPI stays neutral with regard to jurisdictional claims in published maps and institutional affiliations.



© 2020 by the authors. Licensee MDPI, Basel, Switzerland. This article is an open access article distributed under the terms and conditions of the Creative Commons Attribution (CC BY) license (<http://creativecommons.org/licenses/by/4.0/>).