

## Laccase and biomass production by submerged cultivation of *Pleurotus ostreatus* using wine lees



Figure S1. SDS-polyacrylamide Gel-electrophoresis. M: protein molecular weight marker. BG25: Ammonium sulphate precipitated laccase before G25, AG25 after G25 laccase, Anion 1: laccase after anion exchange 1, Anion 2: laccase after anion exchange 2

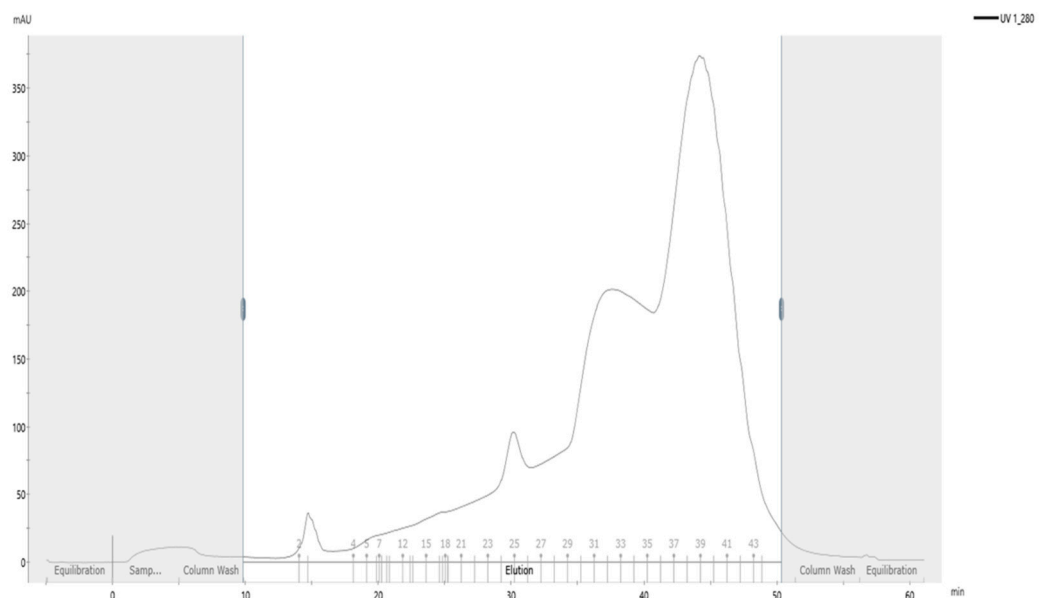


Figure S2. FPLC chromatograph for purification of laccase by HiTrap Q HP (Cytiva,USA). Laccase activity recovered at sample 24,25.

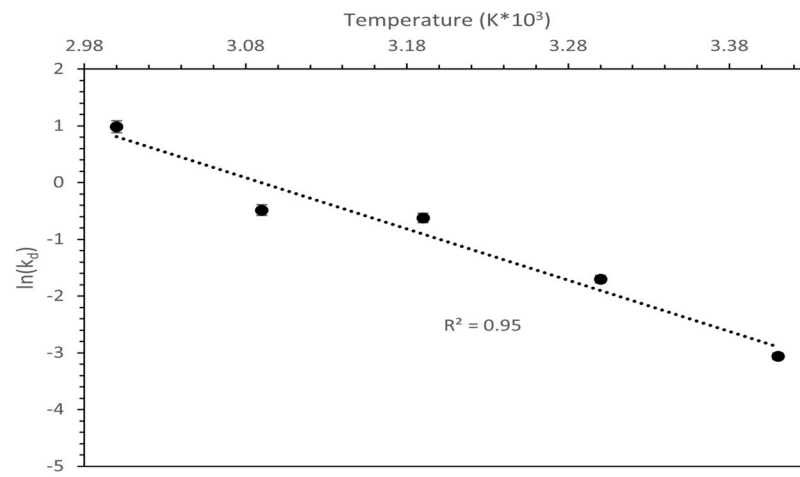


Figure S3. Temperature versus  $\ln(k_d)$  plot for determination of inactivation energy of the purified laccase