

Supplementary Material

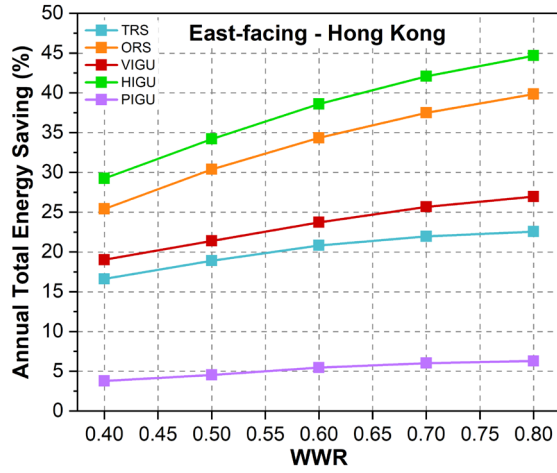
Energy Performance and Comfort Analysis of Three Glazing Materials with Distinct Thermochromic Responses as Roller Shade Alternative in Cooling- and Heating-Dominated Climates

Thilhara Tennakoon¹, Yin-Hoi Chan¹, Ka-Chung Chan¹, Chili Wu¹, Christopher Yu-Hang Chao^{1,2} and Sau-Chung Fu^{1,*}

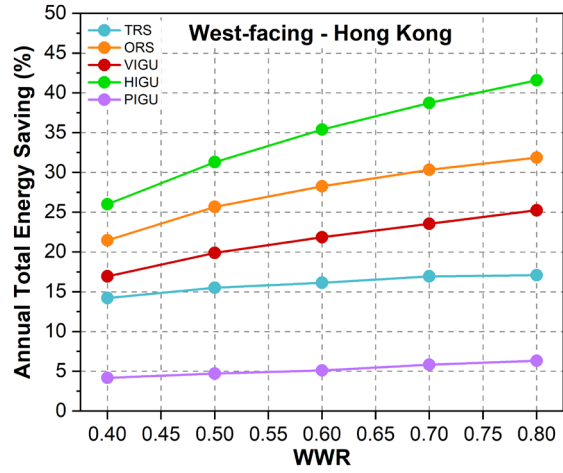
¹ Department of Building Environment and Energy Engineering, The Hong Kong Polytechnic University, Hong Kong, China; thilhara.tennakoon@polyu.edu.hk (T.T.); kristyc.chan@polyu.edu.hk (Y.H.C.); oscar-kc.chan@polyu.edu.hk (K.C.C.); chili.wu@polyu.edu.hk (C.W.); christopher.chao@polyu.edu.hk (C.Y.H.C.)

² Department of Mechanical Engineering, The Hong Kong Polytechnic University, Hong Kong, China

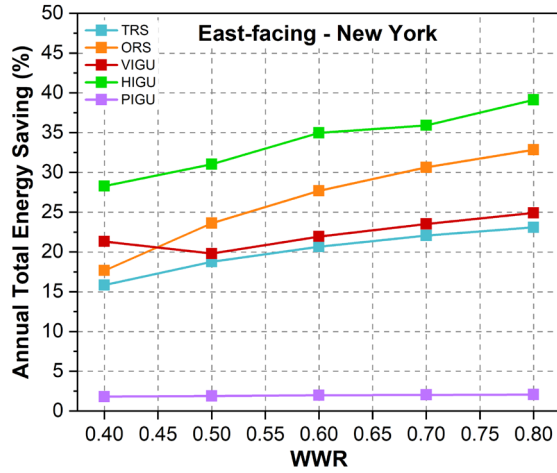
* Correspondence: chung.fu@polyu.edu.hk



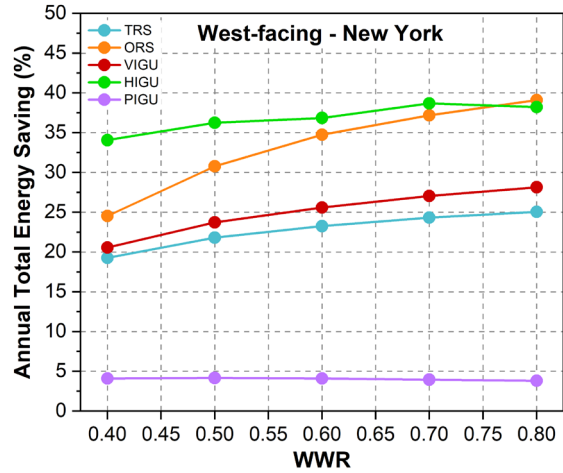
(a)



(b)



(c)



(d)

Figure S1. Annual site energy savings for east and west-facing windows as a function of WWR and window construction in (a, b) Hong Kong and (c, d) New York.

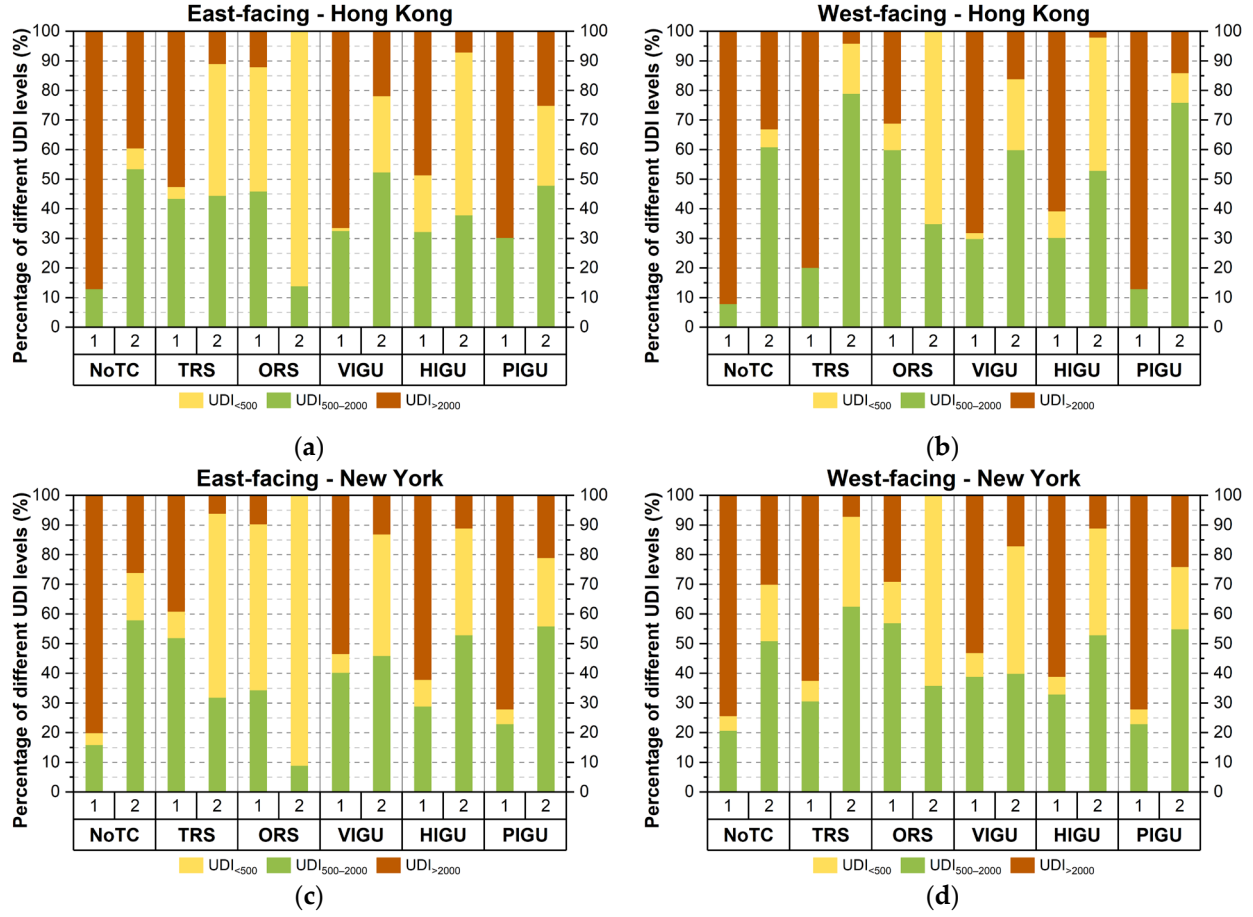


Figure S2. Percentage of underlit ($UDI_{<500}$), well-lit ($UDI_{500-2000}$) and over-lit ($UDI_{>2000}$) office hours for east- and west-facing windows in (a, b) Hong Kong and (c, d) New York.

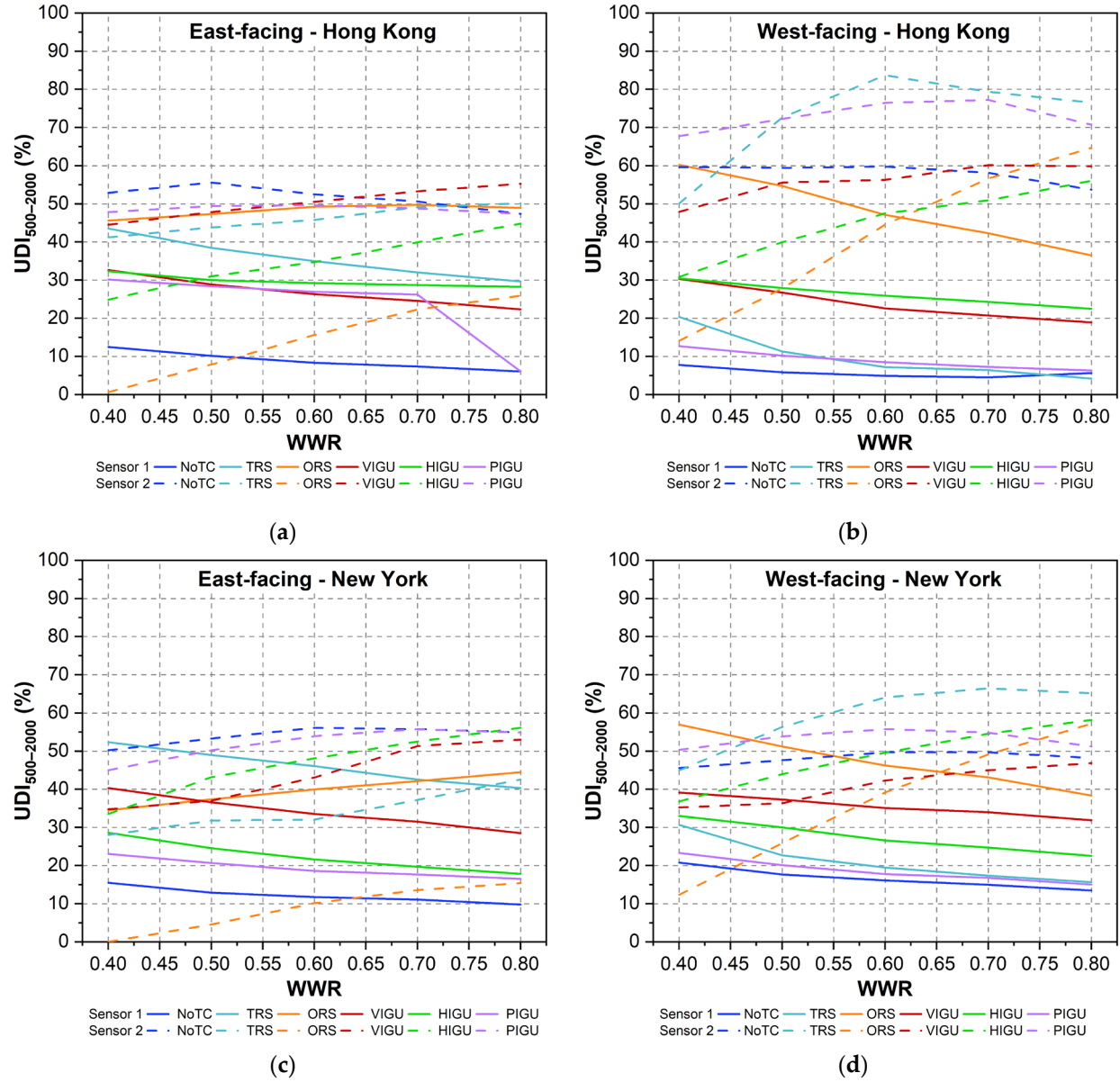


Figure S3. Daylighting performance for east- and west-facing windows in (a, b) Hong Kong and (c, d) New York measured by Sensor 1 (solid line) and Sensor 2 (dashed line).