

# Supplementary Information

## Effects of Acute and Developmental Exposure to Bisphenol S on Chinese Medaka (*Oryzias sinensis*)

Bingying Li <sup>1,†</sup>, Yongsi Huang <sup>1,†</sup>, Duan Pi <sup>1</sup>, Xiang Li <sup>1</sup>, Yafen Guo <sup>1</sup>, Zhiying Liang <sup>1</sup>, Xiaohong Song <sup>2</sup>, Junjie Wang <sup>1,\*</sup> and Xuegeng Wang <sup>1,\*</sup>

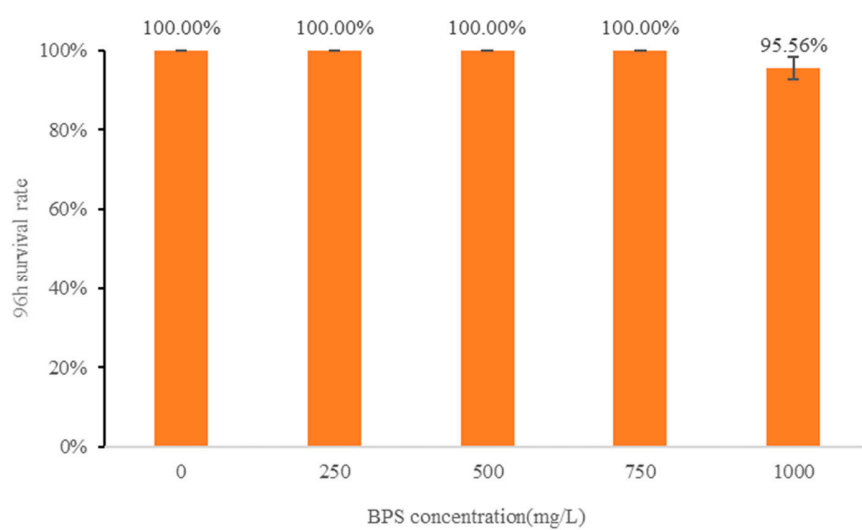
<sup>1</sup> Institute of Modern Aquaculture Science and Engineering, Guangdong-Macao Joint Laboratory for Aquaculture Breeding Development and Innovation, College of Life Sciences, South China Normal University, Guangzhou 510631, China; 20202531009@m.scnu.edu.cn (B.L.); 20202521021@m.scnu.edu.cn (Y.H.); 20201132026@m.scnu.edu.cn (D.P.); 20212521004@m.scnu.edu.cn (X.L.); 20202521099@m.scnu.edu.cn (Y.G.); 20202521014@m.scnu.edu.cn (Z.L.)

<sup>2</sup> Guangxi Key Laboratory of Environmental Pollution Control Theory and Technology, Guilin University of Technology, Guilin 541000, China; songxh@glut.edu.cn

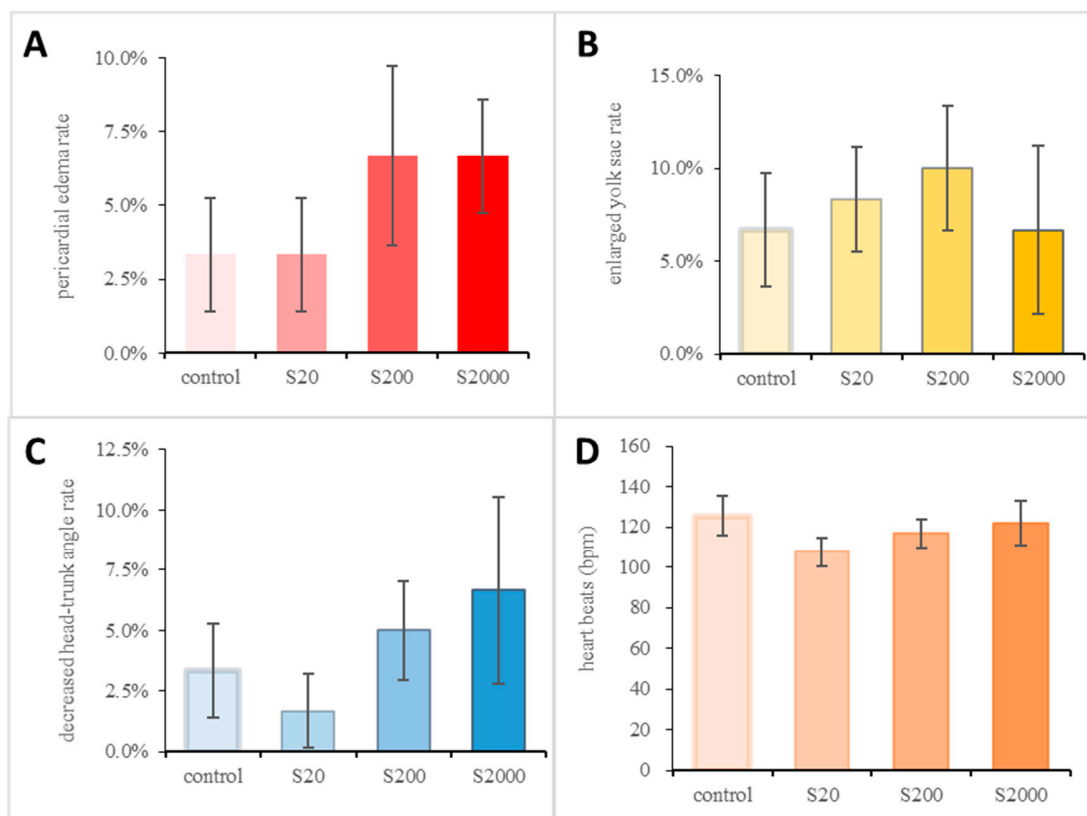
\* Correspondence: 20185210@m.scnu.edu.cn (J.W.); wangxuegeng@scnu.edu.cn (X.W.)

<sup>†</sup> These authors contributed equally to this work.

## Supplemental Figures



Suppl Figure S1: Results of the acute toxic experiment. Survival rates of Chinese medaka embryos exposed to 0 (control), 250, 500, 750, 1000 mg/L BPS for 96 h.



Suppl Figure S2: The growth parameters of the 15 dpf larvae after BPS exposure. (A): The rate of Chinese medaka with pericardial edema (ce); (B): The rate of Chinese medaka with enlarged yolk sac (cv); (C): The rate of Chinese medaka with decreased head-trunk angle (HTA↓); (D): Heart beats (bpm, beats per minute) of the larvae.