

Special Issue

Sensing in Smart Buildings

Message from the Guest Editors

This Special Issue of *Sensors*, entitled *Sensing in Smart Buildings*, will focus on intelligent sensing and information processing techniques for smart buildings. The environment sensing of a smart building presents a number of academic and practical challenges, which include (but are not limited to) the following issues:

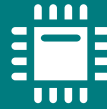
- Sensor selection and placement
- Occupancy estimation
- Localization
- Human activity estimation
- Thermal comfort sensing
- Environment sensing
- Impact on health and wellbeing
- Multi-agent sensing
- Fault diagnosis

Guest Editors

Prof. Dr. Yeng Chai Soh
Dr. Zhenghua Chen
Dr. Chaoyang Jiang

Deadline for manuscript submissions

closed (30 September 2023)



Sensors

an Open Access Journal
by MDPI

Impact Factor 3.5
CiteScore 8.2
Indexed in PubMed



mdpi.com/si/109530

Sensors
Editorial Office
MDPI, Grosspeteranlage 5
4052 Basel, Switzerland
Tel: +41 61 683 77 34
sensors@mdpi.com

[mdpi.com/journal/
sensors](https://mdpi.com/journal/sensors)





Sensors

an Open Access Journal
by MDPI

Impact Factor 3.5
CiteScore 8.2
Indexed in PubMed



[mdpi.com/journal/
sensors](https://mdpi.com/journal/sensors)



About the Journal

Message from the Editor-in-Chief

Sensors is a leading journal devoted to fast publication of the latest achievements of technological developments and scientific research in the huge area of physical, chemical and biochemical sensors, including remote sensing and sensor networks. Both experimental and theoretical papers are published, including all aspects of sensor design, technology, proof of concept and application. *Sensors* organizes Special Issues devoted to specific sensing areas and applications each year.

Editor-in-Chief

Prof. Dr. Vittorio M. N. Passaro

Department of Electrical and Information Engineering, Politecnico di Bari, Via Orabona 4, 70126 Bari, Italy

Author Benefits

Open Access:

free for readers, with article processing charges (APC) paid by authors or their institutions.

High Visibility:

indexed within Scopus, SCIE (Web of Science), PubMed, MEDLINE, PMC, Ei Compendex, Inspec, Astrophysics Data System, and other databases.

Journal Rank:

JCR - Q2 (Instruments and Instrumentation) / CiteScore - Q1 (Instrumentation)