

Special Issue

Metasurfaces in Depth Sensing and 3D Display

Message from the Guest Editors

This Special Issue aims to incorporate various approaches to extracting image depth with the metasurface and identifying how the metasurfaces can contribute to the development of 3D display. In this Special Issue, you are encouraged to submit various developments by metasurfaces for depth sensing or 3D display system. Topics of interest include but are not limited to the following ones. For further information about the topics of interest, please visit:

https://www.mdpi.com/journal/sensors/special_issues/mds3d

- Advanced metasurface/metalens design for depth extraction;
- Metasurface design for reducing the form factor of depth sensing/3D display systems;
- Efficient pupil spread function engineering and realization by metasurfaces for depth sensing;
- 3D object modeling achieved by metasurface-integrated optic systems;
- Advanced 3D display platform in which metasurfaces act as a crucial element;
- Multifunctional/multispectral metasurface design for substitution of existing depth sensing/3D display;
- Other approaches with metasurfaces that can contribute to the development of depth sensing/3D display.

Guest Editors

Prof. Dr. Byoung-ho Lee

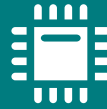
Inter-University Semiconductor Research Center and School of Electrical and Computer Engineering, Seoul National University, Gwanak-Gu Gwanakro 1, Seoul 08826, Korea

Dr. Seung-Yeol Lee

School of Electronics Engineering, College of IT Engineering, Kyungpook National University, Daegu 41566, Korea

Deadline for manuscript submissions

closed (30 September 2021)



Sensors

an Open Access Journal
by MDPI

Impact Factor 3.5
CiteScore 8.2
Indexed in PubMed



[mdpi.com/si/58259](https://www.mdpi.com/si/58259)

Sensors
Editorial Office
MDPI, Grosspeteranlage 5
4052 Basel, Switzerland
Tel: +41 61 683 77 34
sensors@mdpi.com

[mdpi.com/journal/
sensors](https://www.mdpi.com/journal/sensors)





Sensors

an Open Access Journal
by MDPI

Impact Factor 3.5
CiteScore 8.2
Indexed in PubMed



[mdpi.com/journal/
sensors](https://mdpi.com/journal/sensors)



About the Journal

Message from the Editor-in-Chief

Sensors is a leading journal devoted to fast publication of the latest achievements of technological developments and scientific research in the huge area of physical, chemical and biochemical sensors, including remote sensing and sensor networks. Both experimental and theoretical papers are published, including all aspects of sensor design, technology, proof of concept and application. *Sensors* organizes Special Issues devoted to specific sensing areas and applications each year.

Editor-in-Chief

Prof. Dr. Vittorio M. N. Passaro
Department of Electrical and Information Engineering, Politecnico di Bari, Via Orabona 4, 70126 Bari, Italy

Author Benefits

Open Access:

free for readers, with article processing charges (APC) paid by authors or their institutions.

High Visibility:

indexed within Scopus, SCIE (Web of Science), PubMed, MEDLINE, PMC, Ei Compendex, Inspec, Astrophysics Data System, and other databases.

Journal Rank:

JCR - Q2 (Instruments and Instrumentation) / CiteScore - Q1 (Instrumentation)