

Special Issue

Sensors and Wearable Device for Gait Analysis

Message from the Guest Editor

Recent wearable and sensor advances transitioned gait analysis from labs to mobile, continuous real-world assessment. State-of-the-art IMUs, pressure sensors, smart textiles, and multimodal platforms enable detailed gait parameter analysis in clinical and free-living settings. These support early mobility impairment and fall risk detection, rehabilitation monitoring, and sports performance optimization. This Special Issue showcases the latest sensor and wearable innovations for gait analysis. We invite original research and reviews on novel sensor designs, data fusion, real-time gait parameter estimation, machine learning approaches, and validation studies. Submissions addressing challenges like sensor miniaturization, energy efficiency, user compliance, and robustness in heterogeneous populations/environments are welcome. Interdisciplinary contributions bridging engineering, neuroscience, kinesiology, and digital health are encouraged.

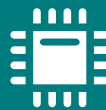
Guest Editor

Dr. Alessandro Puiatti

Institute of Digital Technologies for Personalized Healthcare, University of Applied Sciences and Arts of Southern Switzerland, 6962 Lugano-Viganello, Switzerland

Deadline for manuscript submissions

20 January 2026



Sensors

an Open Access Journal
by MDPI

Impact Factor 3.5
CiteScore 8.2
Indexed in PubMed

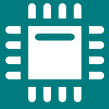


mdpi.com/si/243168

Sensors
Editorial Office
MDPI, Grosspeteranlage 5
4052 Basel, Switzerland
Tel: +41 61 683 77 34
sensors@mdpi.com

[mdpi.com/journal/
sensors](https://mdpi.com/journal/sensors)





Sensors

an Open Access Journal
by MDPI

Impact Factor 3.5
CiteScore 8.2
Indexed in PubMed



[mdpi.com/journal/
sensors](https://mdpi.com/journal/sensors)



About the Journal

Message from the Editor-in-Chief

Sensors is a leading journal devoted to fast publication of the latest achievements of technological developments and scientific research in the huge area of physical, chemical and biochemical sensors, including remote sensing and sensor networks. Both experimental and theoretical papers are published, including all aspects of sensor design, technology, proof of concept and application. *Sensors* organizes Special Issues devoted to specific sensing areas and applications each year.

Editor-in-Chief

Prof. Dr. Vittorio M. N. Passaro

Dipartimento di Ingegneria Elettrica e dell'Informazione (Department of Electrical and Information Engineering), Politecnico di Bari, Via Edoardo Orabona n. 4, 70125 Bari, Italy

Author Benefits

Open Access:

free for readers, with article processing charges (APC) paid by authors or their institutions.

High Visibility:

indexed within Scopus, SCIE (Web of Science), PubMed, MEDLINE, PMC, Ei Compendex, Inspec, Astrophysics Data System, and other databases.

Journal Rank:

JCR - Q2 (Instruments and Instrumentation) / CiteScore - Q1 (Instrumentation)