

## Special Issue

# Topology Control and Protocols in Sensor Network and IoT Applications

### Message from the Guest Editors

The aim of this Special Issue is to solicit papers from academia and industry researchers with original and innovative works on all aspects of topology control and protocol in sensor networks and IoT applications, which review and report on start-of-the-art, highlight challenges, and point to future directions. Topics of interest include, but are not limited to:

- Topology management in IoT and sensor networks
- Topology construction and maintenance algorithms
- Failure detection in IoT and sensor networks
- Failure tolerant in IoT and sensor networks
- Power control and power management
- Testbed, benchmark, and simulation studies in IoT and sensor networks
- Security and privacy issues in topology control of sensor networks

For further reading, please follow the link to the Special Issue Website at:

[http://www.mdpi.com/journal/sensors/special\\_issues/TopologyControlandProtocols](http://www.mdpi.com/journal/sensors/special_issues/TopologyControlandProtocols)

---

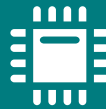
### Guest Editors

Dr. Wenye Wang  
Prof. Dr. Yulong Shen  
Dr. Mingkui Wei

---

### Deadline for manuscript submissions

closed (31 December 2019)



## Sensors

---

an Open Access Journal  
by MDPI

---

Impact Factor 3.5  
CiteScore 8.2  
Indexed in PubMed



[mdpi.com/si/17557](http://mdpi.com/si/17557)

*Sensors*  
Editorial Office  
MDPI, Grosspeteranlage 5  
4052 Basel, Switzerland  
Tel: +41 61 683 77 34  
[sensors@mdpi.com](mailto:sensors@mdpi.com)

[mdpi.com/journal/  
sensors](http://mdpi.com/journal/sensors)





# Sensors

---

an Open Access Journal  
by MDPI

---

Impact Factor 3.5  
CiteScore 8.2  
Indexed in PubMed



[mdpi.com/journal/  
sensors](https://mdpi.com/journal/sensors)



## About the Journal

### Message from the Editor-in-Chief

*Sensors* is a leading journal devoted to fast publication of the latest achievements of technological developments and scientific research in the huge area of physical, chemical and biochemical sensors, including remote sensing and sensor networks. Both experimental and theoretical papers are published, including all aspects of sensor design, technology, proof of concept and application. *Sensors* organizes Special Issues devoted to specific sensing areas and applications each year.

---

### Editor-in-Chief

Prof. Dr. Vittorio M. N. Passaro  
Department of Electrical and Information Engineering, Politecnico di  
Bari, Via Orabona 4, 70126 Bari, Italy

---

### Author Benefits

#### Open Access:

free for readers, with article processing charges (APC) paid by authors or their institutions.

#### High Visibility:

indexed within Scopus, SCIE (Web of Science), PubMed, MEDLINE, PMC, Ei Compendex, Inspec, Astrophysics Data System, and other databases.

#### Journal Rank:

JCR - Q2 (Instruments and Instrumentation) / CiteScore - Q1 (Instrumentation)