

Special Issue

Social Robots and Applications

Message from the Guest Editors

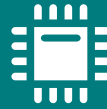
The increasing demands of society in terms of communication, monitorization and assistance, which have been recently exacerbated by the COVID-19 pandemic, are driving the consolidation of a new social model. This model involves a strong presence of technology in daily life settings; thus, robotics is one of the disciplines most drastically affected by this shift. Depending on the particular use case and application area, these social parameters affect navigation, interaction and task planning. Their implementation therefore requires a multidisciplinary approach, including new skills and procedures in the cognitive architecture of the robot, and an evaluation of the robot's performance in terms of functionality, acceptability, utility and accessibility. This Special Issue will provide thorough use case specifications, a description of technical solutions and analysis of user experience in support of the application of social robots in different domains, including: education, telepresence, monitoring, security, assistance, healthcare, service, caregiving, small retail automation or industrial co-working.

Guest Editors

Prof. Dr. Juan Pedro Bandera
Dr. Suna Bensch
Dr. Pedro Núñez Trujillo

Deadline for manuscript submissions

closed (30 July 2023)



Sensors

an Open Access Journal
by MDPI

Impact Factor 3.5
CiteScore 8.2
Indexed in PubMed



mdpi.com/si/116013

Sensors
Editorial Office
MDPI, Grosspeteranlage 5
4052 Basel, Switzerland
Tel: +41 61 683 77 34
sensors@mdpi.com

[mdpi.com/journal/
sensors](https://mdpi.com/journal/sensors)





Sensors

an Open Access Journal
by MDPI

Impact Factor 3.5
CiteScore 8.2
Indexed in PubMed



[mdpi.com/journal/
sensors](https://mdpi.com/journal/sensors)



About the Journal

Message from the Editor-in-Chief

Sensors is a leading journal devoted to fast publication of the latest achievements of technological developments and scientific research in the huge area of physical, chemical and biochemical sensors, including remote sensing and sensor networks. Both experimental and theoretical papers are published, including all aspects of sensor design, technology, proof of concept and application. *Sensors* organizes Special Issues devoted to specific sensing areas and applications each year.

Editor-in-Chief

Prof. Dr. Vittorio M. N. Passaro
Department of Electrical and Information Engineering, Politecnico di Bari, Via Orabona 4, 70126 Bari, Italy

Author Benefits

Open Access:

free for readers, with article processing charges (APC) paid by authors or their institutions.

High Visibility:

indexed within Scopus, SCIE (Web of Science), PubMed, MEDLINE, PMC, Ei Compendex, Inspec, Astrophysics Data System, and other databases.

Journal Rank:

JCR - Q2 (Instruments and Instrumentation) / CiteScore - Q1 (Instrumentation)