

Special Issue

Reconfigurable Intelligent Surface-Aided MIMO Systems: Challenges and Trends

Message from the Guest Editors

The recent development of reconfigurable intelligent surfaces (RIS) has challenged the perception that wireless communication environments are unmanageable. As a result, RIS has emerged as one of the most eminent technologies for the envisioned enhanced mobile broadband (eMBB) and massive machine-type communication required in for next-generation 6G networks. However, signal processing, channel acquisition, low-complexity system design, and adaptive optimization are all hurdles faced by the deployment of RIS in communication networks. Topics of this special issue include, but are not limited to, the following:

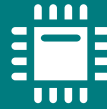
- Channel modeling and estimations in RIS-aided MIMO systems;
- Performance limits of RIS-aided MIMO systems;
- Signal processing and machine learning for RIS-aided MIMO systems;
- Deployment and network optimization for RIS-aided MIMO systems;
- RIS-aided RF sensing and localization;
- Low-complexity RIS-aided beamforming scheme;
- Emerging applications of RISs;
- Integration of RISs with existing wireless technologies (massive MIMO, millimeter-wave communication, THz communication, D2D communications, UAV communications, energy harvesting).

Guest Editors

Prof. Dr. Karim Seddik
Dr. Hongliang Zhang
Dr. Radwa Sultan

Deadline for manuscript submissions

closed (10 February 2024)



Sensors

an Open Access Journal
by MDPI

Impact Factor 3.5
CiteScore 8.2
Indexed in PubMed



mdpi.com/si/120125

Sensors
Editorial Office
MDPI, Grosspeteranlage 5
4052 Basel, Switzerland
Tel: +41 61 683 77 34
sensors@mdpi.com

[mdpi.com/journal/
sensors](https://mdpi.com/journal/sensors)





Sensors

an Open Access Journal
by MDPI

Impact Factor 3.5
CiteScore 8.2
Indexed in PubMed



[mdpi.com/journal/
sensors](https://mdpi.com/journal/sensors)



About the Journal

Message from the Editor-in-Chief

Sensors is a leading journal devoted to fast publication of the latest achievements of technological developments and scientific research in the huge area of physical, chemical and biochemical sensors, including remote sensing and sensor networks. Both experimental and theoretical papers are published, including all aspects of sensor design, technology, proof of concept and application. *Sensors* organizes Special Issues devoted to specific sensing areas and applications each year.

Editor-in-Chief

Prof. Dr. Vittorio M. N. Passaro
Department of Electrical and Information Engineering, Politecnico di Bari, Via Orabona 4, 70126 Bari, Italy

Author Benefits

Open Access:

free for readers, with article processing charges (APC) paid by authors or their institutions.

High Visibility:

indexed within Scopus, SCIE (Web of Science), PubMed, MEDLINE, PMC, Ei Compendex, Inspec, Astrophysics Data System, and other databases.

Journal Rank:

JCR - Q2 (Instruments and Instrumentation) / CiteScore - Q1 (Instrumentation)