

## Special Issue

# Advanced Sensing Techniques in Biomedical Signal Processing

### Message from the Guest Editor

The diagnosis and prognosis of human heart and brain conditions in hospital predominantly rely on biomedical signals and sensor data processing; this medical data is analyzed to inform the study of a patient's cardiac and neurological health. Currently, more innovative technologies and intelligent systems are required to process a larger volume of medical data and provide a higher quality of healthcare services, enabling the automatic and accurate detection of symptoms of diseases in their early stages. The aim of this Special Issue is to present the latest innovative research from scholars and experts in the field of electrophysiological signal and image processing using computer pattern recognition and/or deep learning. This includes papers that cover areas such as biomedical engineering, computer vision, and Internet of Things, as well as theoretical and practical aspects of various sensors and information theory in medical image processing.

---

### Guest Editor

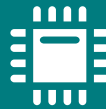
Prof. Dr. Dakun Lai

School of Electronic Science and Engineering, University of Electronic Science and Technology of China, Chengdu 611731, China

---

### Deadline for manuscript submissions

31 July 2026



## Sensors

---

an Open Access Journal  
by MDPI

---

Impact Factor 3.5  
CiteScore 9.4  
Indexed in PubMed



[mdpi.com/si/246192](https://mdpi.com/si/246192)

*Sensors*  
Editorial Office  
MDPI, Grosspeteranlage 5  
4052 Basel, Switzerland  
Tel: +41 61 683 77 34  
[sensors@mdpi.com](mailto:sensors@mdpi.com)

[mdpi.com/journal/  
sensors](https://mdpi.com/journal/sensors)





# Sensors

---

an Open Access Journal  
by MDPI

---

Impact Factor 3.5  
CiteScore 9.4  
Indexed in PubMed



[mdpi.com/journal/  
sensors](https://mdpi.com/journal/sensors)



## About the Journal

### Message from the Editor-in-Chief

*Sensors* is a leading journal devoted to fast publication of the latest achievements of technological developments and scientific research in the huge area of physical, chemical and biochemical sensors, including remote sensing and sensor networks. Both experimental and theoretical papers are published, including all aspects of sensor design, technology, proof of concept and application. *Sensors* organizes Special Issues devoted to specific sensing areas and applications each year.

---

### Editor-in-Chief

Prof. Dr. Vittorio M. N. Passaro

Department of Electrical and Information Engineering, Politecnico di Bari, Via Orabona 4, 70126 Bari, Italy

---

### Author Benefits

#### Open Access:

free for readers, with article processing charges (APC) paid by authors or their institutions.

#### High Visibility:

indexed within Scopus, SCIE (Web of Science), PubMed, MEDLINE, PMC, Ei Compendex, Inspec, Astrophysics Data System, and other databases.

#### Journal Rank:

JCR - Q2 (Instruments and Instrumentation) / CiteScore - Q1 (Instrumentation)