

Special Issue

Advanced Tactile Sensors: Design and Applications

Message from the Guest Editors

This Special Issue, “Advanced Tactile Sensors: Design and Applications”, delves into the cutting-edge developments and innovative applications of tactile sensing technologies. This Special Issue primarily focuses on tactile sensors within the scope of *Sensors* and the significant impact on perception, robot manipulation, embodied intelligence, human–robot interaction, and robot dexterity. By exploring the latest advancements in sensor design and integration, this collection aims to highlight how tactile sensors enhance the capabilities of robots, enabling more sophisticated and nuanced interactions with their environments. Potential topics include, but are not limited to, the following:

- Advanced tactile sensors and actuators;
- Embodied intelligence with touch;
- System integration of tactile sensors in robots;
- Tactile sensing in robot manipulation and human–robot interactions;
- Advanced methodologies in tactile perception;
- Datasets and benchmarks for robot tactile perception;
- Tactile simulations;
- The tactile internet;
- Other tactile applications.

Guest Editors

Dr. Zhenyu Lu

Prof. Dr. Bin Fang

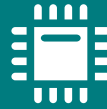
Dr. Wenbo Ding

Dr. Daolin Ma

Prof. Dr. Chenguang Yang

Deadline for manuscript submissions

closed (30 September 2025)



Sensors

an Open Access Journal
by MDPI

Impact Factor 3.5
CiteScore 8.2
Indexed in PubMed



mdpi.com/si/210810

Sensors
Editorial Office
MDPI, Grosspeteranlage 5
4052 Basel, Switzerland
Tel: +41 61 683 77 34
sensors@mdpi.com

[mdpi.com/journal/
sensors](https://mdpi.com/journal/sensors)





Sensors

an Open Access Journal
by MDPI

Impact Factor 3.5
CiteScore 8.2
Indexed in PubMed



[mdpi.com/journal/
sensors](https://mdpi.com/journal/sensors)



About the Journal

Message from the Editor-in-Chief

Sensors is a leading journal devoted to fast publication of the latest achievements of technological developments and scientific research in the huge area of physical, chemical and biochemical sensors, including remote sensing and sensor networks. Both experimental and theoretical papers are published, including all aspects of sensor design, technology, proof of concept and application. *Sensors* organizes Special Issues devoted to specific sensing areas and applications each year.

Editor-in-Chief

Prof. Dr. Vittorio M. N. Passaro

Department of Electrical and Information Engineering, Politecnico di Bari, Via Orabona 4, 70126 Bari, Italy

Author Benefits

Open Access:

free for readers, with article processing charges (APC) paid by authors or their institutions.

High Visibility:

indexed within Scopus, SCIE (Web of Science), PubMed, MEDLINE, PMC, Ei Compendex, Inspec, Astrophysics Data System, and other databases.

Journal Rank:

JCR - Q2 (Instruments and Instrumentation) / CiteScore - Q1 (Instrumentation)