



sensors

an Open Access Journal by MDPI



Sensing and Data Analysis Techniques for Intelligent Healthcare

Guest Editors:

**Prof. Dr. Qammer Hussain
Abbasi**

qammer.abbasi@glasgow.ac.uk

Dr. Syed Aziz Shah

s.shah@mmu.ac.uk

Prof. Dr. Jawad Ahmad

j.ahmad@napier.ac.uk

Prof. Dr. Muhammad Ali Imran

muhammad.imran@glasgow.ac.uk

Deadline for manuscript
submissions:

closed (30 June 2021)

Message from the Guest Editors

Recent advancements in wearable and non-wearable sensing systems are experiencing a rapid transformation that is influencing our daily lives. Remote healthcare and telemedicine applications are some applications of these wearable and non-wearable sensors.

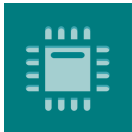
Furthermore, data analytics is transforming the digital healthcare sector in various respects. One of the biggest challenges is the development of machine-learning-based intelligent healthcare technologies that can enhance daily living, enable the monitoring of large-scale and small-scale body movements such as falls, monitor a person's respiratory rate and heartbeat, and allow for automatic alerts when critical events are predicted to occur. Physiological markers and biomarkers play an important role in overcoming these challenges. Behavioural biometrics, including voice, hand-eye coordination, gait, etc.

This Special Issues invites the submission of original scientific and research articles on state-of-the-art remote patient monitoring in the intelligent healthcare sector. An additional focus of this Special Issue is articles/reviews in the area of cybersecurity in digital healthcare.



mdpi.com/si/44981

Special Issue



sensors



an Open Access Journal by MDPI

Editors-in-Chief

Prof. Dr. Assefa M. Melesse

Dr. Alexander Star

Prof. Dr. Mehmet Rasit Yuce

Prof. Dr. Eduard Llobet

Prof. Dr. Guillermo Villanueva

Prof. Dr. Vittorio M.N. Passaro

Dr. Davide Brunelli

Dr. Raffaele Bruno

Prof. Dr. Roozbeh Ghaffari

Prof. Dr. Xianbin Wang

Prof. Dr. Mengdao Xing

Message from the Editorial Board

Sensors is a leading journal devoted to fast publication of the latest achievements of technological developments and scientific research in the huge area of physical, chemical and biochemical sensors, including remote sensing and sensor networks. Both experimental and theoretical papers are published, including all aspects of sensor design, technology, proof of concept and application. *Sensors* organizes Special Issues devoted to specific sensing areas and applications each year.

Author Benefits

Open Access :— free for readers, with [article processing charges \(APC\)](#) paid by authors or their institutions.

High Visibility: indexed within [Scopus](#), [SCIE \(Web of Science\)](#), [PubMed](#), [MEDLINE](#), [PMC](#), [Embase](#), [Ei Compendex](#), [Inspec](#), and many [other databases](#).

Journal Rank: [JCR](#) - Q1 (*Instruments & Instrumentation*) / [CiteScore](#) - Q1 (*Instrumentation*)

Contact Us

Sensors
MDPI, St. Alban-Anlage 66
4052 Basel, Switzerland

Tel: +41 61 683 77 34
Fax: +41 61 302 89 18
www.mdpi.com

mdpi.com/journal/sensors
sensors@mdpi.com
[@Sensors_MDPI](https://twitter.com/Sensors_MDPI)