



sensors



an Open Access Journal by MDPI

Intelligent Systems for Exploiting Real Sensed Data in Smart City Applications

Guest Editor:

Prof. Dr. Enrique Alba

ITIS Software, Universidad de
Málaga, E.T.S.I. Informática (3-2-
12), B. Louis Pasteur s/n, 29071
Málaga, Spain

Deadline for manuscript
submissions:

closed (8 October 2018)

Message from the Guest Editor

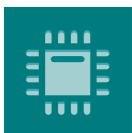
In this Special Issue we welcome applications using real sensed data of a city to create innovative original city services in the standard six axes of smart cities: Economy, People, Living, Mobility, Environment and Governance. We expect new final applications showing unseen efficacy and efficiency to deliver high quality services to managers and citizens based in intelligent systems. Thus, we encourage submissions using machine learning, bio-inspired algorithms, fuzzy logic, recurrent neural networks, extensions to traditional techniques, and artificial intelligence in general. We also welcome the utilization of new technologies to run these services, such as FIWARE, cloud computing, IoT techniques, microservices, spark, blockchain, and all the related ecosystem of tools helping intelligent algorithms to reach ambitious goals to transform our society for the good.

We welcome submissions with a holistic vision, not just focusing in one problem, but on its relations to other problems and their impact in the city. Both research papers and review articles will be considered.



mdpi.com/si/14859

Special Issue



sensors



an Open Access Journal by MDPI

Editor-in-Chief

Prof. Dr. Vittorio M. N. Passaro

Dipartimento di Ingegneria
Elettrica e dell'Informazione
(Department of Electrical and
Information Engineering),
Politecnico di Bari, Via Edoardo
Orabona n. 4, 70125 Bari, Italy

Message from the Editor-in-Chief

Sensors is a leading journal devoted to fast publication of the latest achievements of technological developments and scientific research in the huge area of physical, chemical and biochemical sensors, including remote sensing and sensor networks. Both experimental and theoretical papers are published, including all aspects of sensor design, technology, proof of concept and application. *Sensors* organizes Special Issues devoted to specific sensing areas and applications each year.

Author Benefits

Open Access : free for readers, with [article processing charges \(APC\)](#) paid by authors or their institutions.

High Visibility: indexed within [Scopus](#), [SCIE \(Web of Science\)](#), [PubMed](#), [MEDLINE](#), [PMC](#), [Ei Compendex](#), [Inspec](#), [Astrophysics Data System](#), and [other databases](#).

Journal Rank: JCR - Q2 (*Instruments & Instrumentation*) / CiteScore - Q1 (*Instrumentation*)

Contact Us

Sensors Editorial Office
MDPI, St. Alban-Anlage 66
4052 Basel, Switzerland

Tel: +41 61 683 77 34
www.mdpi.com

mdpi.com/journal/sensors
sensors@mdpi.com
[X@Sensors_MDPI](#)