



Wireless Body Area Networks (WBAN)

Guest Editors:

**Dr. Daluwathu Mulla Gamage
Preethichandra**

**Prof. Chandrathilak de Silva
Liyanage**

Dr. Umer Izhar

Dr. Lasi Piyathilaka

Deadline for manuscript
submissions:

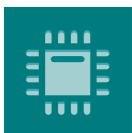
31 May 2024

Message from the Guest Editors

Wireless body area networks have become a popular area of research in the recent past with the availability of wireless wearable IoT devices. The use of wireless body area networks has enriched biomedical data collection in the health, sports, biomedical, security, and healthcare fields. Authors are invited to submit original high-quality papers reporting novel advances in wireless body area networks, including but not limited to the following topics:

- Wearable health monitoring;
- WBAN addressing and routing protocols;
- Energy harvesting for WBAN applications;
- Energy-efficient physical and Mac layer protocols for WBAN;
- Edge computing for WBAN;
- Healthcare applications of WBAN;
- WBAN in patient condition monitoring;
- Accurate motion detection of the human/animal body;
- Privacy and ethical issues related to WBAN;
- Medical application of WBAN;
- Security of data in WBAN;
- New hardware and software architectures for WBAN;
- WBAN in aged care and assisted living;
- WBAN in sports applications;
- WBAN for industrial safety;
- WBAN applications in telemedicine;
- COVID-19-related applications of WBAN.





sensors



an Open Access Journal by MDPI

Editor-in-Chief

Prof. Dr. Vittorio M. N. Passaro

Dipartimento di Ingegneria
Elettrica e dell'Informazione
(Department of Electrical and
Information Engineering),
Politecnico di Bari, Via Edoardo
Orabona n. 4, 70125 Bari, Italy

Message from the Editor-in-Chief

Sensors is a leading journal devoted to fast publication of the latest achievements of technological developments and scientific research in the huge area of physical, chemical and biochemical sensors, including remote sensing and sensor networks. Both experimental and theoretical papers are published, including all aspects of sensor design, technology, proof of concept and application. *Sensors* organizes Special Issues devoted to specific sensing areas and applications each year.

Author Benefits

Open Access : free for readers, with [article processing charges \(APC\)](#) paid by authors or their institutions.

High Visibility: indexed within [Scopus](#), [SCIE \(Web of Science\)](#), [PubMed](#), [MEDLINE](#), [PMC](#), [Ei Compendex](#), [Inspec](#), [Astrophysics Data System](#), and [other databases](#).

Journal Rank: JCR - Q2 (*Instruments & Instrumentation*) / CiteScore - Q1 (*Instrumentation*)

Contact Us

Sensors Editorial Office
MDPI, St. Alban-Anlage 66
4052 Basel, Switzerland

Tel: +41 61 683 77 34
www.mdpi.com

mdpi.com/journal/sensors
sensors@mdpi.com
[X@Sensors_MDPI](#)