



sensors



an Open Access Journal by MDPI

Machine and Deep Learning in Sensing and Imaging: Emerging Trends, Challenges and Opportunities

Guest Editors:

Prof. Dr. Abdeldjalil Ouahabi

UMR 1253, iBrain, Université de
Tours, INSERM, Tours, France

abdeldjalil.ouahabi@univ-
tours.fr

Dr. Amir Benzaoui

Electrical Engineering
Department, University August
20, 1955, BP 26, El Hadaiek,
Skikda Road 21000, Algeria

amirbenzaoui@gmail.com

Dr. Sébastien Jacques

GREMAN UMR 7347, University of
Tours, 37000 Tours, France

sebastien.jacques@univ-tours.fr

Deadline for manuscript
submissions:

2 March 2022

Message from the Guest Editors

Dear Colleagues,

Artificial intelligence is everywhere in sensing and imaging, from acquisition to data processing, and offers hope for meeting a growing demand for automatic data analysis and interpretation. The fields concerned are varied and range from medical diagnosis to facial recognition, including smart sensors, information and communication systems, via the Internet.

A wide range of machine learning methods have been applied to analyze and interpret data of various kinds from sensors embedded in different tools and devices, or from portable sensor devices. Big data, as well as recent methods based on deep learning, have allowed the emergence of high accuracy algorithms to meet an ever-growing need for processing and interpretation. This Special Issue encourages authors to submit new research results regarding methods and applications in this field. The topics include, but are not limited to:

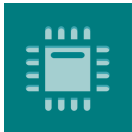
- Medical imaging
- Biomedical engineering
- Brain imaging and therapy
- Data fusion techniques
- Information and communication systems
- Smarts sensors and IoT

For more information, please access the website at:
https://www.mdpi.com/journal/sensors/special_issues/MDLSI



[mdpi.com/si/76361](https://www.mdpi.com/si/76361)

Special Issue



sensors



an Open Access Journal by MDPI

Editors-in-Chief

Prof. Dr. Assefa M. Melesse

Dr. Alexander Star

Prof. Dr. Mehmet Rasit Yuce

Prof. Dr. Eduard Llobet

Prof. Dr. Guillermo Villanueva

Prof. Dr. Vittorio M.N. Passaro

Dr. Davide Brunelli

Dr. Raffaele Bruno

Prof. Dr. Roozbeh Ghaffari

Prof. Dr. Xianbin Wang

Prof. Dr. Mengdao Xing

Message from the Editorial Board

Sensors is a leading journal devoted to fast publication of the latest achievements of technological developments and scientific research in the huge area of physical, chemical and biochemical sensors, including remote sensing and sensor networks. Both experimental and theoretical papers are published, including all aspects of sensor design, technology, proof of concept and application. *Sensors* organizes Special Issues devoted to specific sensing areas and applications each year.

Author Benefits

Open Access :— free for readers, with [article processing charges \(APC\)](#) paid by authors or their institutions.

High Visibility: indexed within [Scopus](#), [SCIE \(Web of Science\)](#), [PubMed](#), [MEDLINE](#), [PMC](#), [Embase](#), [Ei Compindex](#), [Inspec](#), and many [other databases](#).

Journal Rank: [JCR](#) - Q1 (*Instruments & Instrumentation*) / [CiteScore](#) - Q1 (*Instrumentation*)

Contact Us

Sensors
MDPI, St. Alban-Anlage 66
4052 Basel, Switzerland

Tel: +41 61 683 77 34
Fax: +41 61 302 89 18
www.mdpi.com

mdpi.com/journal/sensors
sensors@mdpi.com
[@Sensors_MDPI](#)