



sensors



an Open Access Journal by MDPI

Connecting Data, People, and Artificial Intelligence toward Smart and Personalized Healthcare

Guest Editors:

Dr. Lei Shi

Dr. Ioannis Ivrissimtzis

Dr. Sunčica Hadžidedić

Dr. Xingjie Wei

Dr. Frederick W. B. Li

Deadline for manuscript
submissions:

closed (31 May 2024)

Message from the Guest Editors

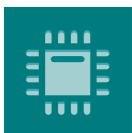
The healthcare industry is being transformed and revolutionized by the latest advances in the Internet of Things, intelligent sensors, machine learning, privacy and security technologies, and human-centered artificial intelligence design. The widespread applications of various intelligent terminals and wearable sensing devices support the evolution of the pervasive health paradigm towards preventative, predictive, personalized, and participatory healthcare. Technological advances in wearables and sensors allow unobtrusive continuous sensing to be combined with multiple technologies such as artificial intelligence, making it possible to monitor health in an unobtrusive and seamless manner, transforming episodic, largely manual sampling processes to continuous, context-aware monitoring and intelligent intervention.

This Special Issue calls for state-of-the-art research on various issues and solutions that leverage artificial intelligence technology or focus on the impact of smart and personalized healthcare on people, medical data, and technology. Technical contribution papers, industrial case studies, and review papers are welcome.



mdpi.com/si/136589

Special Issue



sensors



an Open Access Journal by MDPI

Editor-in-Chief

Prof. Dr. Vittorio M. N. Passaro

Dipartimento di Ingegneria
Elettrica e dell'Informazione
(Department of Electrical and
Information Engineering),
Politecnico di Bari, Via Edoardo
Orabona n. 4, 70125 Bari, Italy

Message from the Editor-in-Chief

Sensors is a leading journal devoted to fast publication of the latest achievements of technological developments and scientific research in the huge area of physical, chemical and biochemical sensors, including remote sensing and sensor networks. Both experimental and theoretical papers are published, including all aspects of sensor design, technology, proof of concept and application. *Sensors* organizes Special Issues devoted to specific sensing areas and applications each year.

Author Benefits

Open Access : free for readers, with [article processing charges \(APC\)](#) paid by authors or their institutions.

High Visibility: indexed within [Scopus](#), [SCIE \(Web of Science\)](#), [PubMed](#), [MEDLINE](#), [PMC](#), [Ei Compendex](#), [Inspec](#), [Astrophysics Data System](#), and [other databases](#).

Journal Rank: JCR - Q2 (Chemistry, Analytical) / CiteScore - Q1 (Instrumentation)

Contact Us

Sensors Editorial Office
MDPI, Grosspeteranlage 5
4052 Basel, Switzerland

Tel: +41 61 683 77 34
www.mdpi.com

mdpi.com/journal/sensors
sensors@mdpi.com
[X@Sensors_MDPI](#)