

Special Issue

The Interplay Between Inflammation and Metabolism in Disease

Message from the Guest Editor

Many metabolic pathways of nutritional biomarkers are altered in pathological situations, whether chronic or acute. Studying this association may provide a basis for the emergence of inflammatory and metabolic diseases, uncovering new avenues of research in the fields of metabolism, nutrition, and metabolic biomarkers. During most conditions of stress and inflammation, changes in metabolism occur. Nutrient overload and/or lack of protection against the inflammatory response lead to impaired metabolic health. This Special Issue aims to explore the relationship between nutritional metabolism and inflammation mediated by oxidative stress during chronic or acute illness.

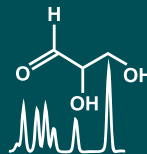
Guest Editor

Prof. Dr. Elena Planells

Department of Physiology, University of Granada, 18071 Granada, Spain

Deadline for manuscript submissions

closed (31 March 2025)



Metabolites

an Open Access Journal
by MDPI

Impact Factor 3.7
CiteScore 6.9
Indexed in PubMed



mdpi.com/si/212687

Metabolites
Editorial Office
MDPI, Grosspeteranlage 5
4052 Basel, Switzerland
Tel: +41 61 683 77 34
metabolites@mdpi.com

[mdpi.com/journal/
metabolites](https://mdpi.com/journal/metabolites)





Metabolites

an Open Access Journal
by MDPI

Impact Factor 3.7
CiteScore 6.9
Indexed in PubMed



[mdpi.com/journal/
metabolites](https://mdpi.com/journal/metabolites)



About the Journal

Message from the Editor-in-Chief

The metabolome is the result of the combined effects of genetic and environmental influences on metabolic processes. Metabolomic studies can provide a global view of metabolism and thereby improve our understanding of the underlying biology. Advances in metabolomic technologies have shown utility for elucidating mechanisms which underlie fundamental biological processes including disease pathology. *Metabolites* is proud to be part of the development of metabolomics and we look forward to working with many of you to publish high quality metabolomic studies.

Editor-in-Chief

Dr. Amedeo Lonardo
Internal Medicine, Ospedale Civile di Baggiovara, Azienda Ospedaliero-
Universitaria, 41126 Modena, Italy

Author Benefits

High Visibility:

indexed within Scopus, SCIE (Web of Science), PubMed, PMC, Embase, CAPlus / SciFinder, and other databases.

Journal Rank:

JCR - Q2 (Biochemistry and Molecular Biology) / CiteScore - Q2 (Endocrinology, Diabetes and Metabolism)

Rapid Publication:

manuscripts are peer-reviewed and a first decision is provided to authors approximately 14.4 days after submission; acceptance to publication is undertaken in 3.6 days (median values for papers published in this journal in the first half of 2025).