

Special Issue

Metabolic Biomarkers in Type 2 Diabetes: From Discovery to Application

Message from the Guest Editors

Metabolic biomarkers offer insights into T2DM pathophysiology, aiding in diagnosis, disease progression prediction, and personalized treatment. This Special Issue invites submissions on the discovery, validation, and application of biomarkers in T2DM, focusing on:

- Identification of novel biomarkers
- Biomarkers predicting disease progression and treatment response
- Clinical trials on biomarker-driven personalized treatments
- Integration of biomarkers into clinical practice

We aim to bridge the gap between research and practice, enhancing T2DM understanding and care through biomarker use.

Guest Editors

Dr. Eiji Kutoh

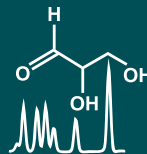
Biomedical Center, Tokyo 132-0034, Japan

Dr. Shengshuai Shan

Clinical and Experimental Therapeutics, University of Georgia, Augusta, GA 30912, USA

Deadline for manuscript submissions

closed (30 November 2025)



Metabolites

an Open Access Journal
by MDPI

Impact Factor 3.7
CiteScore 6.9
Indexed in PubMed



mdpi.com/si/219268

Metabolites
Editorial Office
MDPI, Grosspeteranlage 5
4052 Basel, Switzerland
Tel: +41 61 683 77 34
metabolites@mdpi.com

[mdpi.com/journal/
metabolites](https://mdpi.com/journal/metabolites)





Metabolites

an Open Access Journal
by MDPI

Impact Factor 3.7
CiteScore 6.9
Indexed in PubMed



[mdpi.com/journal/
metabolites](https://mdpi.com/journal/metabolites)



About the Journal

Message from the Editor-in-Chief

The metabolome is the result of the combined effects of genetic and environmental influences on metabolic processes. Metabolomic studies can provide a global view of metabolism and thereby improve our understanding of the underlying biology. Advances in metabolomic technologies have shown utility for elucidating mechanisms which underlie fundamental biological processes including disease pathology. *Metabolites* is proud to be part of the development of metabolomics and we look forward to working with many of you to publish high quality metabolomic studies.

Editor-in-Chief

Dr. Amedeo Lonardo
Internal Medicine, Ospedale Civile di Baggiovara, Azienda Ospedaliero-Universitaria, 41126 Modena, Italy

Author Benefits

High Visibility:

indexed within Scopus, SCIE (Web of Science), PubMed, PMC, Embase, CAPlus / SciFinder, and other databases.

Journal Rank:

JCR - Q2 (Biochemistry and Molecular Biology) / CiteScore - Q2 (Endocrinology, Diabetes and Metabolism)

Rapid Publication:

manuscripts are peer-reviewed and a first decision is provided to authors approximately 16.7 days after submission; acceptance to publication is undertaken in 3.6 days (median values for papers published in this journal in the second half of 2025).