

Special Issue

Adipose Tissue, Reproduction and Metabolic Health in Women

Message from the Guest Editors

The prevalence of obesity has increased worldwide, particularly in the female population, affecting up to 30% of women of reproductive age. Besides its association with diabetes, hypertension, dyslipidemia, obstructive sleep apnea, metabolic-dysfunction-associated fatty liver disease, and cardiovascular comorbidities, obesity also has multiple consequences in the reproductive axis, increasing the risk of infertility, miscarriage, and polycystic ovarian syndrome.

This Special Issue, “Adipose Tissue, Reproduction and Metabolic Health in Women”, focuses on the reproductive consequences of increased adiposity for women from a molecular and translational approach. We are interested in original research, review articles, and meta-analyses describing metabolites and metabolic pathways, metabolic perturbations induced by drugs, the impact of nutrients and environment on metabolic pathways, and the development of a methodology for detecting metabolites or changes in metabolic pathways.

Guest Editors

Dr. Aldo Ferreira-Hermosillo

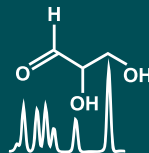
Unidad de Investigación Médica en Enfermedades Endocrinas, Centro Médico Nacional Siglo XXI, Instituto Mexicano del Seguro Social, Mexico City, Mexico

Dr. Renata Saucedo

Unidad de Investigación Médica en Enfermedades Endocrinas, Centro Médico Nacional Siglo XXI, Instituto Mexicano del Seguro Social, Mexico City, Mexico

Deadline for manuscript submissions

closed (5 March 2025)



Metabolites

an Open Access Journal
by MDPI

Impact Factor 3.7
CiteScore 6.9
Indexed in PubMed



mdpi.com/si/191592

Metabolites
Editorial Office
MDPI, Grosspeteranlage 5
4052 Basel, Switzerland
Tel: +41 61 683 77 34
metabolites@mdpi.com

[mdpi.com/journal/
metabolites](https://mdpi.com/journal/metabolites)





Metabolites

an Open Access Journal
by MDPI

Impact Factor 3.7
CiteScore 6.9
Indexed in PubMed



[mdpi.com/journal/
metabolites](https://mdpi.com/journal/metabolites)



About the Journal

Message from the Editor-in-Chief

The metabolome is the result of the combined effects of genetic and environmental influences on metabolic processes. Metabolomic studies can provide a global view of metabolism and thereby improve our understanding of the underlying biology. Advances in metabolomic technologies have shown utility for elucidating mechanisms which underlie fundamental biological processes including disease pathology. *Metabolites* is proud to be part of the development of metabolomics and we look forward to working with many of you to publish high quality metabolomic studies.

Editor-in-Chief

Dr. Amedeo Lonardo

Internal Medicine, Ospedale Civile di Baggiovara, Azienda Ospedaliero-Universitaria, 41126 Modena, Italy

Author Benefits

High Visibility:

indexed within Scopus, SCIE (Web of Science), PubMed, PMC, Embase, CAPlus / SciFinder, and other databases.

Journal Rank:

JCR - Q2 (Biochemistry and Molecular Biology) / CiteScore - Q2 (Endocrinology, Diabetes and Metabolism)

Rapid Publication:

manuscripts are peer-reviewed and a first decision is provided to authors approximately 14.4 days after submission; acceptance to publication is undertaken in 3.6 days (median values for papers published in this journal in the first half of 2025).