

an Open Access Journal by MDPI

## Organismal Metabolism and Nutritional Support

Guest Editors:

### Prof. Dr. Lifeng Yang

The Shanghai Institute of Nutrition and Health (SINH) of the Chinese Academy of Sciences (CAS), Shanghai, China

### Dr. Lin Wang

Department of Physiology, Institute of Basic Medical Sciences, School of Basic Medicine Peking Union Medical College, Chinese Academy of Medical Sciences, 5 Dong Dan San Tiao, Beijing, China

Deadline for manuscript submissions:

**closed (31 January 2024)**

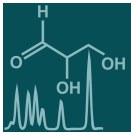
### Message from the Guest Editors

Dear Colleagues,

The recent advancements in high throughput technologies such as metabolomics have provided us with the opportunity to explore the biomarkers of biological patient samples and helped to elucidate the functions of small molecules in driving disease progression. Currently, the application of in vivo isotope tracing and metabolic imaging technology for samples from human patients and experimental models enables us to decipher in vivo organismal metabolism under physiological conditions or its metabolic reprogramming locally within the development of chronic diseases. However, many challenges remain to be addressed, including a comprehensive metabolic landscape of organs in different stages of diseases, its cellular metabolic changes under the influence of distinct microenvironments/host dietary intake, discovery of therapeutic targets combining the study of metabolomics with that of other omics, and nutritional support to alleviate disease progression.

In this Special Issue, we invite both original and review articles on both technical and biological studies focusing on organismal metabolism and nutritional support.





an Open Access Journal by MDPI

## Editor-in-Chief

### Dr. Amedeo Lonardo

1. Formerly Director of the Simple Operating Unit "Metabolic Syndrome", Azienda Ospedaliero-Universitaria, 41126 Modena, Italy  
2. Formerly Professor of Internal Medicine, School of Specialization of Allergology and Clinical Immunology, University of Modena and Reggio Emilia, 41121 Modena, Italy

## Message from the Editor-in-Chief

The metabolome is the result of the combined effects of genetic and environmental influences on metabolic processes. Metabolomic studies can provide a global view of metabolism and thereby improve our understanding of the underlying biology. Advances in metabolomic technologies have shown utility for elucidating mechanisms which underlie fundamental biological processes including disease pathology. *Metabolites* is proud to be part of the development of metabolomics and we look forward to working with many of you to publish high quality metabolomic studies.

## Author Benefits

**Open Access:** free for readers, with article processing charges (APC) paid by authors or their institutions.

**High Visibility:** indexed within Scopus, SCIE (Web of Science), PubMed, PMC, Embase, CAPlus / SciFinder, and other databases.

**Journal Rank:** JCR - Q2 (*Biochemistry and Molecular Biology*) / CiteScore - Q2 (*Endocrinology, Diabetes and Metabolism*)

## Contact Us

*Metabolites* Editorial Office  
MDPI, St. Alban-Anlage 66  
4052 Basel, Switzerland

Tel: +41 61 683 77 34  
[www.mdpi.com](http://www.mdpi.com)

[mdpi.com/journal/metabolites](http://mdpi.com/journal/metabolites)  
[metabolites@mdpi.com](mailto:metabolites@mdpi.com)  
[X@MetabolitesMDPI](https://twitter.com/MetabolitesMDPI)