

Special Issue

Interventional Cardiology and Vascular Medicine

Message from the Guest Editor

Cardiac and vascular diseases represent the leading cause of death worldwide. The limits of interventional cardiology are going to expand new patient subsets, which is also due to the growing variety of procedures that can be performed. Moreover, patients that are currently being treated have more comorbidities and require specific skills due to the aging population. In this Special Issue, we will discuss current challenges in interventional cardiology and peripheral interventions, as well as specific supports to cardiac interventions such as mechanical circulatory supports. We will also discuss advancements in cardiac structural interventions.

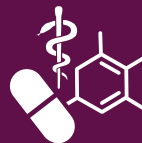
Guest Editor

Dr. Alessandro Durante

Head of Clinical and Interventional Cardiology Unit, Policlinico San Marco, 24040 Zingonia, Italy

Deadline for manuscript submissions

closed (31 May 2024)



Medicines

an Open Access Journal
by MDPI

Indexed in PubMed



mdpi.com/si/171867

Medicines

Editorial Office

MDPI, Grosspeteranlage 5

4052 Basel, Switzerland

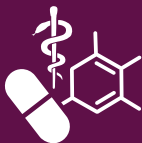
Tel: +41 61 683 77 34

medicines@mdpi.com

mdpi.com/journal/

medicines





Medicines

an Open Access Journal
by MDPI

Indexed in PubMed



[mdpi.com/journal/
medicines](https://mdpi.com/journal/medicines)



About the Journal

Message from the Editor-in-Chief

Editor-in-Chief

Prof. Dr. Hiroshi Sakagami
Meikai University Research Institute of Odontology (M-RIO), 1-1
Keyakidai, Sakado, Saitama 350-0283, Japan

Author Benefits

Open Access:

free for readers, with article processing charges (APC) paid by authors or their institutions.

High Visibility:

indexed within PubMed, PMC, CAPlus / SciFinder, and other databases.

Rapid Publication:

manuscripts are peer-reviewed and a first decision is provided to authors approximately 45 days after submission; acceptance to publication is undertaken in 5.7 days (median values for papers published in this journal in the first half of 2025).