

Special Issue

Biological Pathways and Molecular Mechanisms of Dementia

Message from the Guest Editors

Dementia is one of the most serious health problems among the elderly, for which only limited medical treatment is available. Molecular pathological studies of dementia disorders, such as Alzheimer's disease (AD), frontotemporal dementia (FTD), and dementia with Lewy bodies (DLB), have greatly advanced along with the discoveries of the genes associated with their familial forms as well as their risk genes. Notably, recent evidence suggests that pathological hallmark proteins, such as amyloid- β (A β), tau, TDP-43, FUS, and α -synuclein, are linked to various biological and molecular pathways: for example, enzymes including proteases (e.g. β -, γ -, δ -secretases), kinases, phosphatases, acetylcholine esterase, and glucocerebrosidase; neurotransmitters, neurotrophic factors, hormones, and other biological ligands and their receptors; lipids and apolipoproteins and their receptors; cell death pathways, including apoptosis and necroptosis; intracellular transport systems, including axonal transport; proteostasis, including ubiquitin proteasome systems (UPSs), autophagy, and mitophagy.

Guest Editors

Dr. Wataru Araki

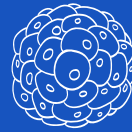
1. Department of Neurology and Neurological Science, Institute of Science Tokyo, Bunkyo-ku, Tokyo 113-8510, Japan
2. Memory Clinic Ochanomizu, Bunkyo-ku, Tokyo 113-8510, Japan

Dr. Madepalli K. Lakshmana

Department of Immunology and Nano-Medicine, Herbert Wertheim College of Medicine, Florida International University, Miami, FL, USA

Deadline for manuscript submissions

closed (28 February 2023)



Cells

an Open Access Journal
by MDPI

Impact Factor 5.2
CiteScore 10.5
Indexed in PubMed



mdpi.com/si/120339

Cells
Editorial Office
MDPI, Grosspeteranlage 5
4052 Basel, Switzerland
Tel: +41 61 683 77 34
cells@mdpi.com

[mdpi.com/journal/
cells](https://mdpi.com/journal/cells)





Cells

an Open Access Journal
by MDPI

Impact Factor 5.2
CiteScore 10.5
Indexed in PubMed



[mdpi.com/journal/
cells](https://mdpi.com/journal/cells)



About the Journal

Message from the Editorial Board

Cells has become a solid international scientific journal that is now indexed on SCIE and in other databases. We have successfully introduced a special issues format so that these issues serve as mini-forums in specific areas of cell science. *Cells* encourages researchers to suggest new special issues, serve as special issues editors, and volunteer to be reviewers. Our main focus will remain on cell anatomy and physiology, the structure and function of organelles, cell adhesion and motility, and the regulation of intracellular signaling, growth, differentiation, and aging. We are open to both original research papers and reviews.

Editors-in-Chief

Dr. Alexander E. Kalyuzhny

Dental Basic Sciences, University of Minnesota, 308 Harvard St. SE,
Minneapolis, MN 55455, USA

Prof. Dr. Cord Brakebusch

Biotech Research & Innovation Centre, The University of Copenhagen,
Copenhagen, Denmark

Author Benefits

High Visibility:

indexed within Scopus, SCIE (Web of Science), PubMed, MEDLINE, PMC, CAPlus / SciFinder, and other databases.

Journal Rank:

JCR - Q2 (Cell Biology) / CiteScore - Q1 (General Biochemistry, Genetics and Molecular Biology)

Rapid Publication:

manuscripts are peer-reviewed and a first decision is provided to authors approximately 15.5 days after submission; acceptance to publication is undertaken in 2.8 days (median values for papers published in this journal in the second half of 2025).