

**Supplementary data for paper ‘Subseasonal-to-
Seasonal Forecasting for Wind Turbine
Maintenance Scheduling’**

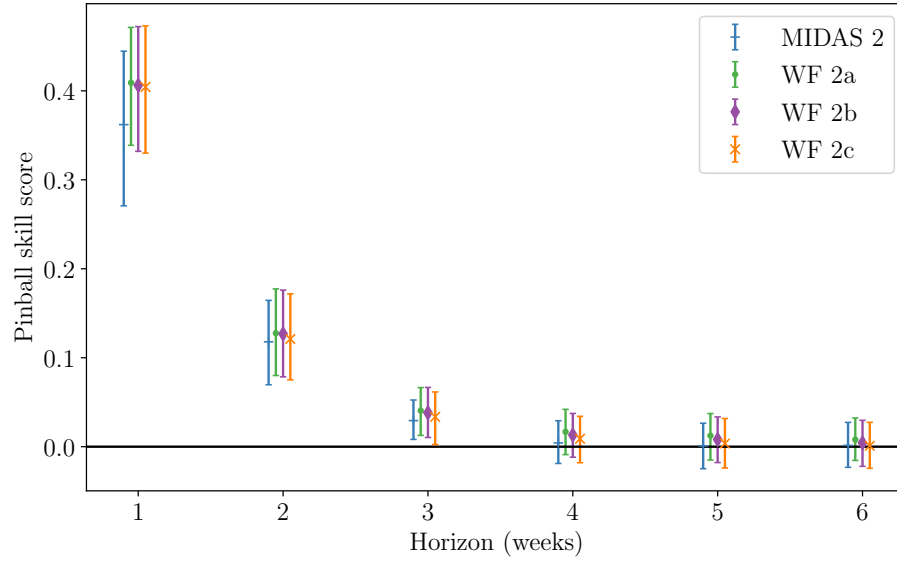


Figure S1: Pinball skill score of weekly mean wind speed index relative to climatology. The forecasts labelled ‘WF 2’ are based on corrected ERA 5 data for that wind farm. Error bars show 95% bootstrapped confidence intervals.

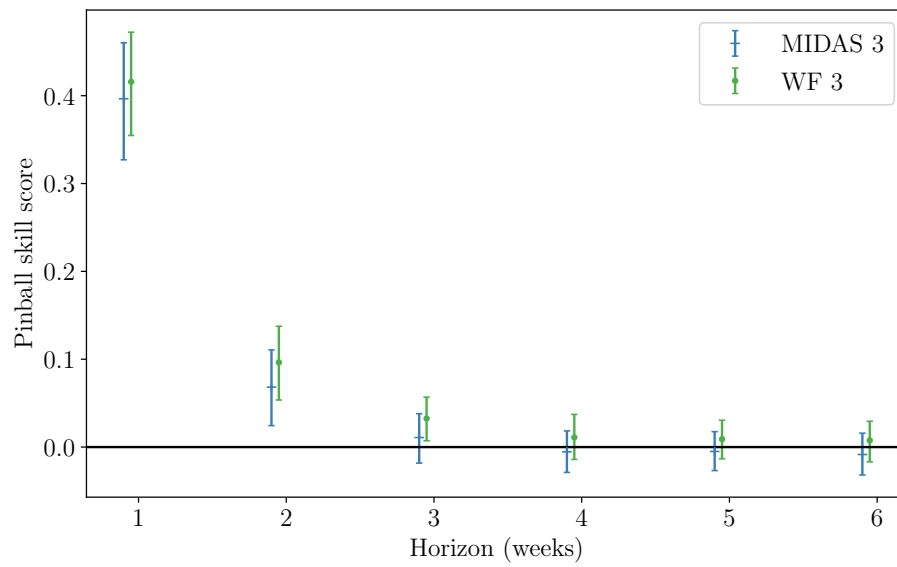


Figure S2: Pinball skill score of weekly mean wind speed index relative to climatology. The forecasts labelled ‘WF 3’ are based on corrected ERA 5 data for that wind farm. Error bars show 95% bootstrapped confidence intervals.

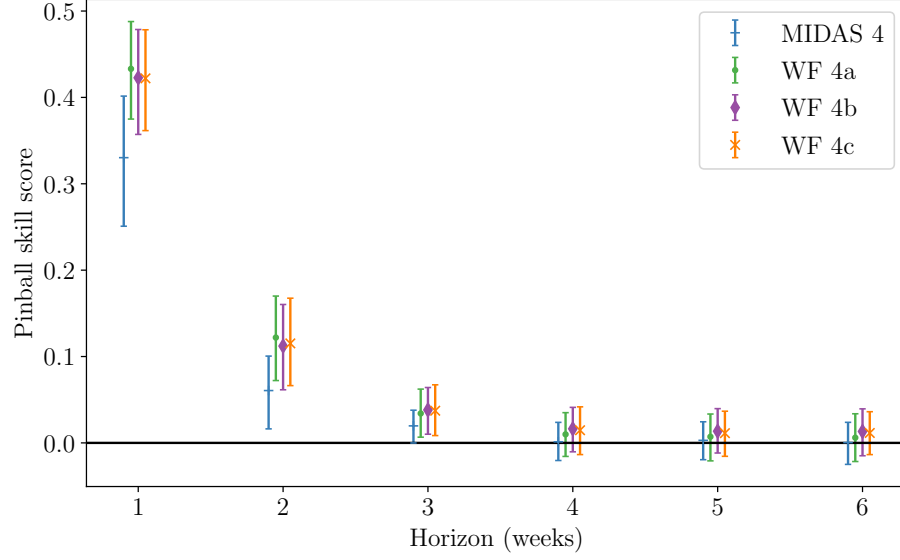


Figure S3: Pinball skill score of weekly mean wind speed index relative to climatology. The forecasts labelled ‘WF 4’ are based on corrected ERA 5 data for that wind farm. Error bars show 95% bootstrapped confidence intervals.

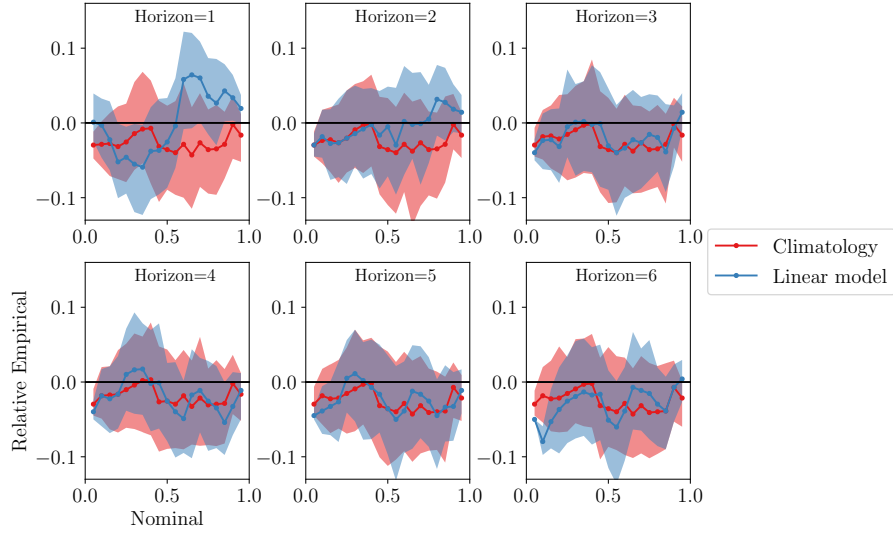


Figure S4: Reliability of weekly mean wind speed forecast at MIDAS 2. Intervals show 95% bootstrapped confidence bands.

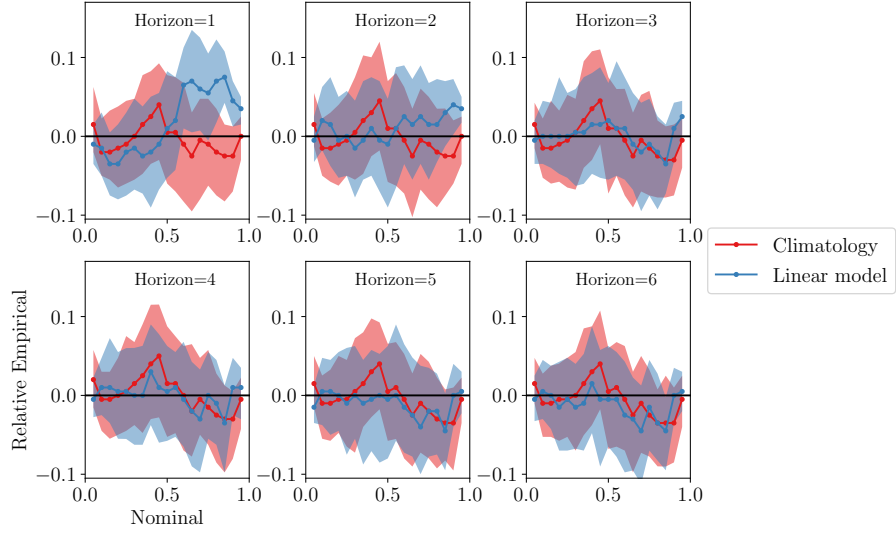


Figure S5: Reliability of weekly mean wind speed forecast at MIDAS 3. Intervals show 95% bootstrapped confidence bands.

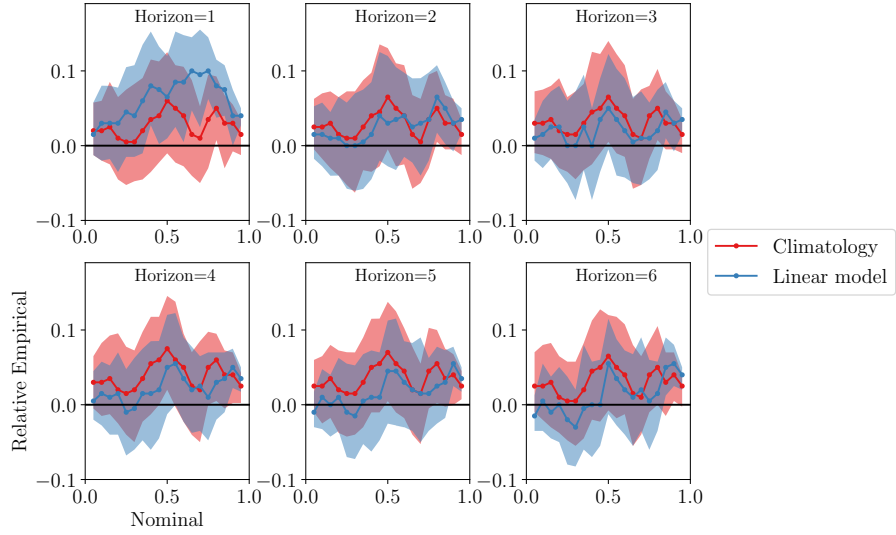


Figure S6: Reliability of weekly mean wind speed forecast at MIDAS 4. Intervals show 95% bootstrapped confidence bands.

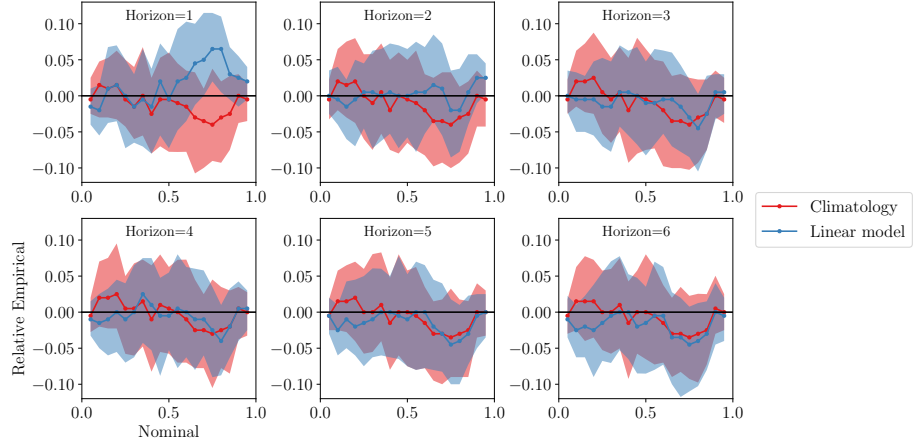


Figure S7: Reliability of weekly mean wind speed forecast at WF2a. Intervals show 95% bootstrapped confidence bands.

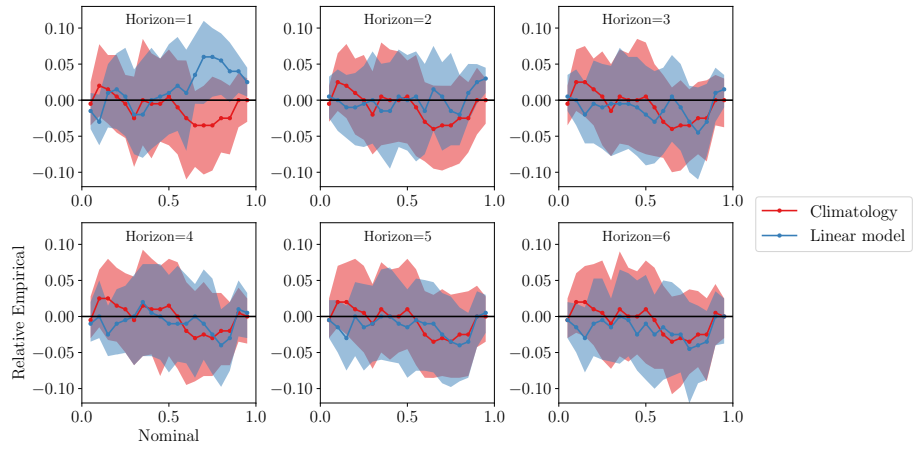


Figure S8: Reliability of weekly mean wind speed forecast at WF2b. Intervals show 95% bootstrapped confidence bands.

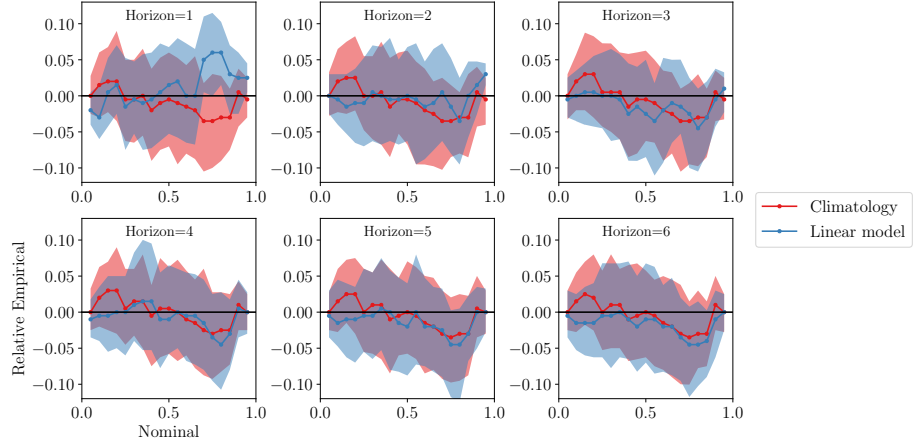


Figure S9: Reliability of weekly mean wind speed forecast at WF2c. Intervals show 95% bootstrapped confidence bands.

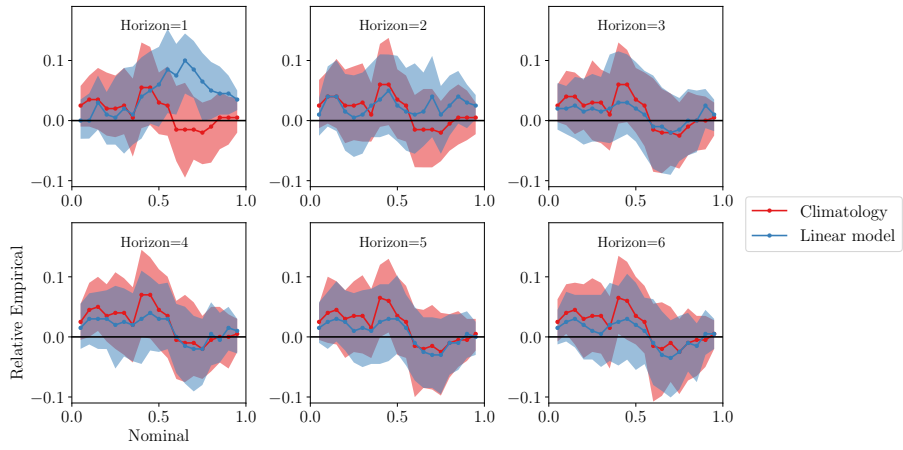


Figure S10: Reliability of weekly mean wind speed forecast at WF3. Intervals show 95% bootstrapped confidence bands.

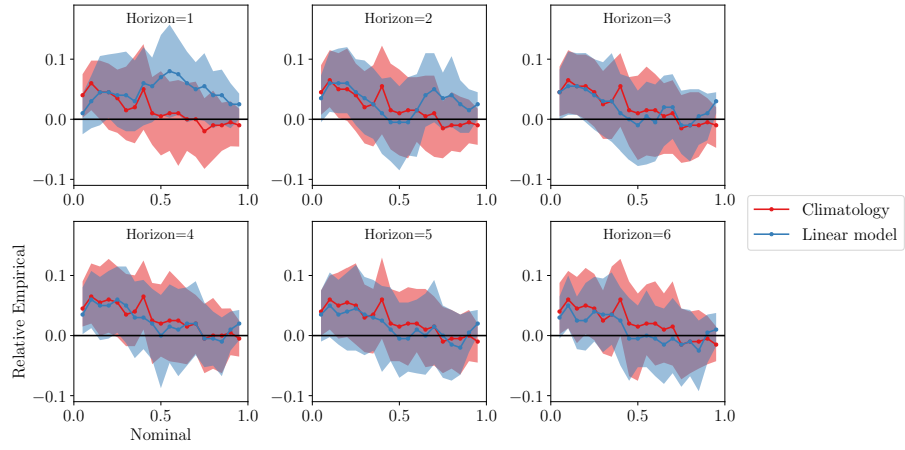


Figure S11: Reliability of weekly mean wind speed forecast at WF4a. Intervals show 95% bootstrapped confidence bands.

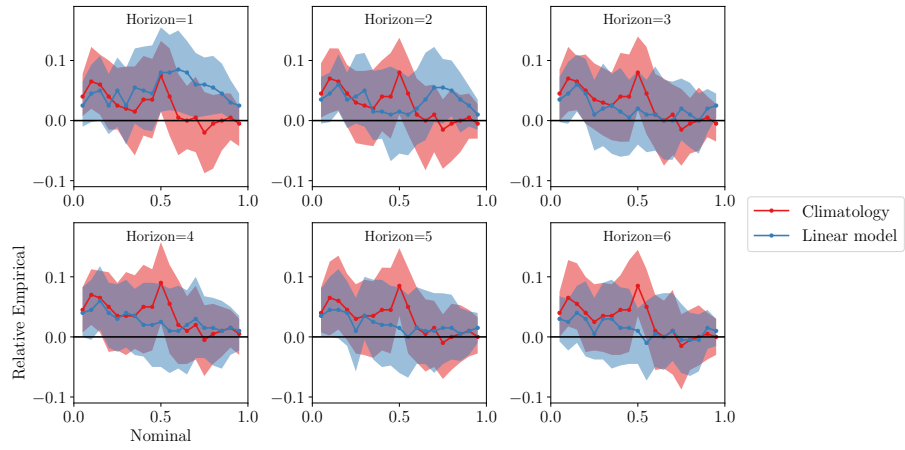


Figure S12: Reliability of weekly mean wind speed forecast at WF4b. Intervals show 95% bootstrapped confidence bands.

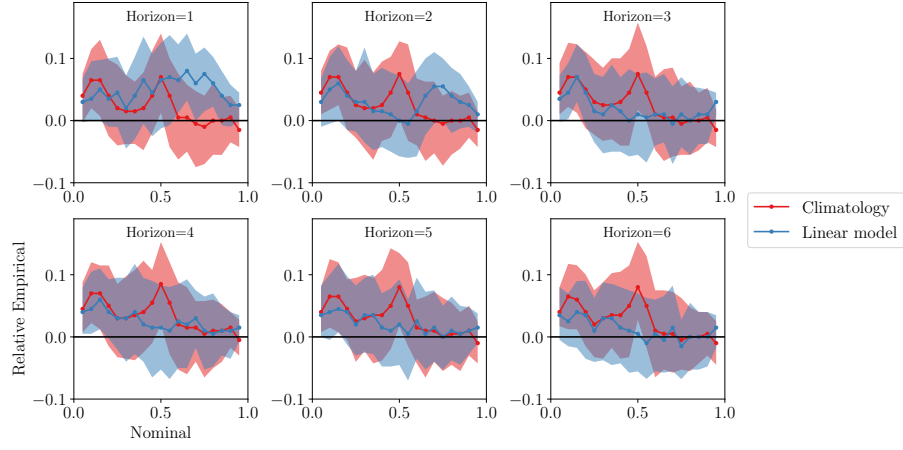


Figure S13: Reliability of weekly mean wind speed forecast at WF4c. Intervals show 95% bootstrapped confidence bands.

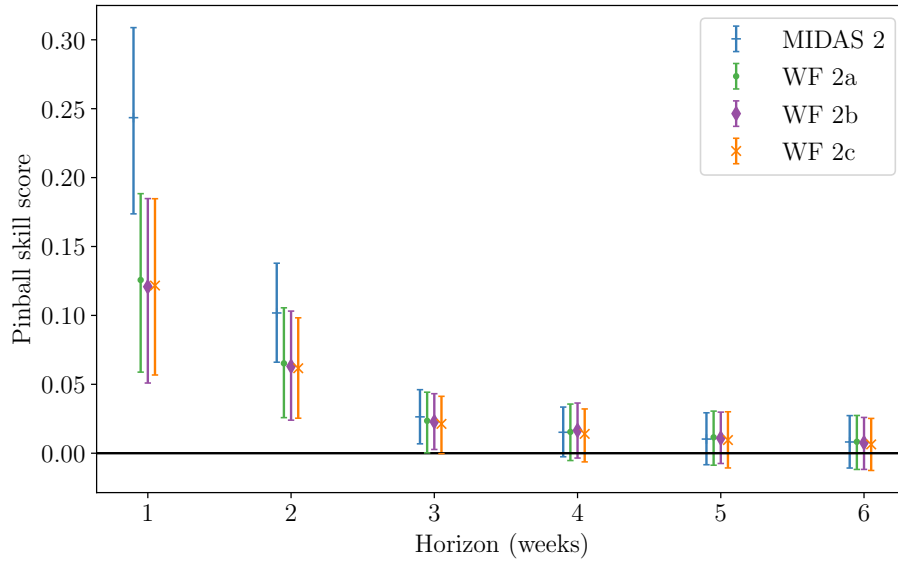


Figure S14: Pinball skill score of weekly variability (weekly standard deviation of hourly wind speeds) relative to climatology. The forecasts labelled ‘WF 2’ are based on corrected ERA 5 data for that wind farm. Error bars show 95% bootstrapped confidence intervals.

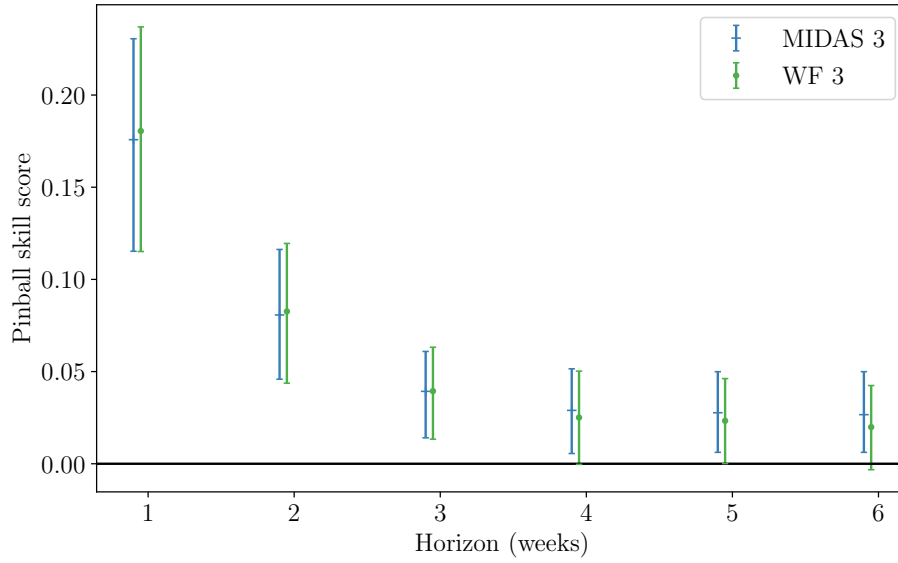


Figure S15: Pinball skill score of weekly variability (weekly standard deviation of hourly wind speeds) relative to climatology. The forecasts labelled ‘WF 3’ are based on corrected ERA 5 data for that wind farm. Error bars show 95% bootstrapped confidence intervals.

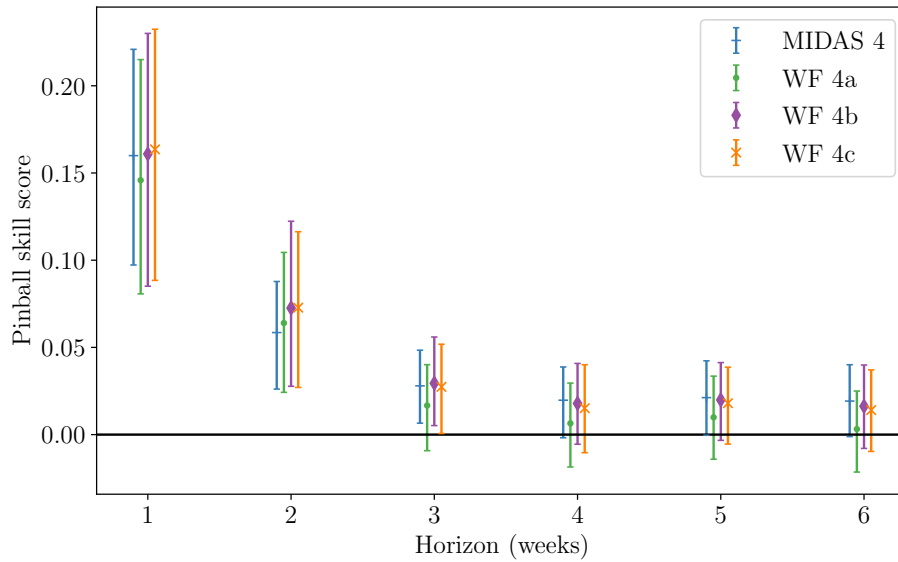


Figure S16: Pinball skill score of weekly variability (weekly standard deviation of hourly wind speeds) relative to climatology. The forecasts labelled ‘WF 4’ are based on corrected ERA 5 data for that wind farm. Error bars show 95% bootstrapped confidence intervals.

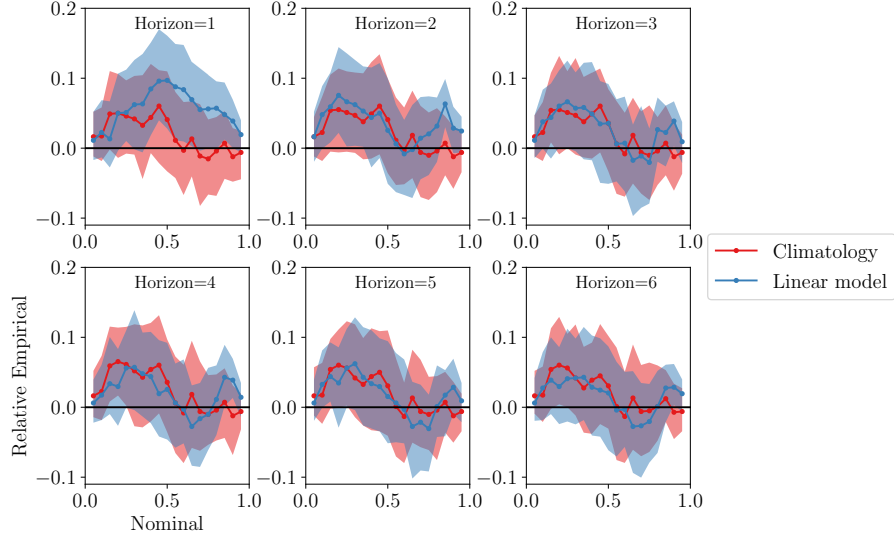


Figure S17: Reliability of variability forecast at MIDAS 2. Intervals show 95% bootstrapped confidence bands.

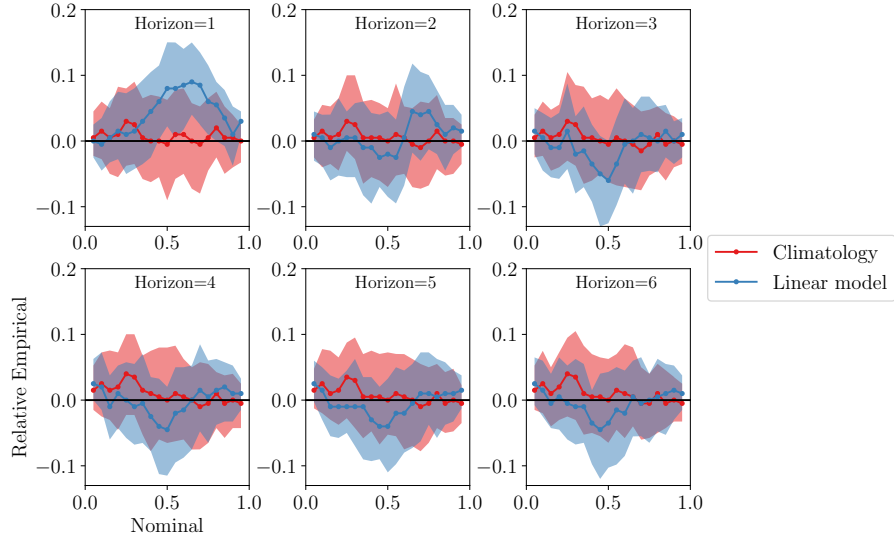


Figure S18: Reliability of variability forecast at MIDAS 3. Intervals show 95% bootstrapped confidence bands.

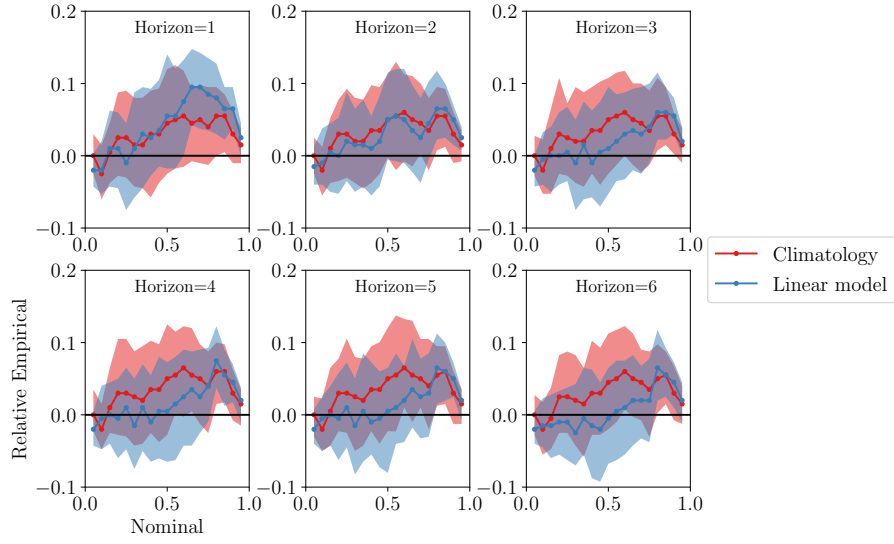


Figure S19: Reliability of variability forecast at MIDAS 4. Intervals show 95% bootstrapped confidence bands.

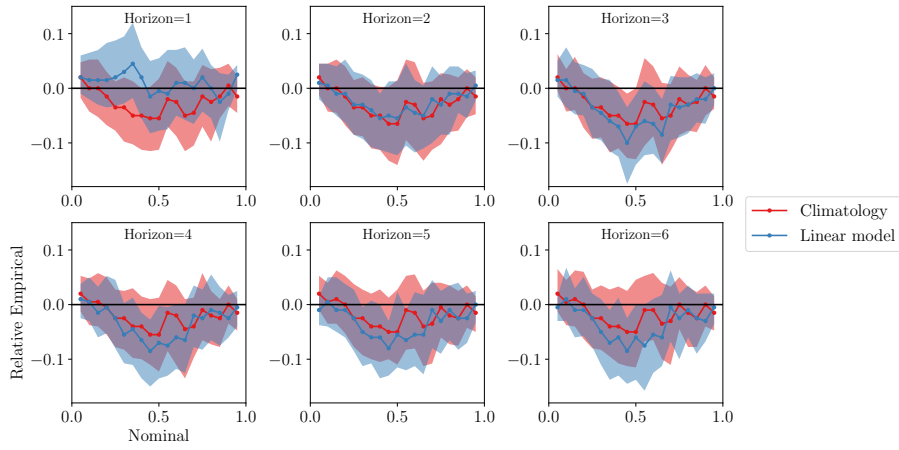


Figure S20: Reliability of variability forecast at WF2a. Intervals show 95% bootstrapped confidence bands.

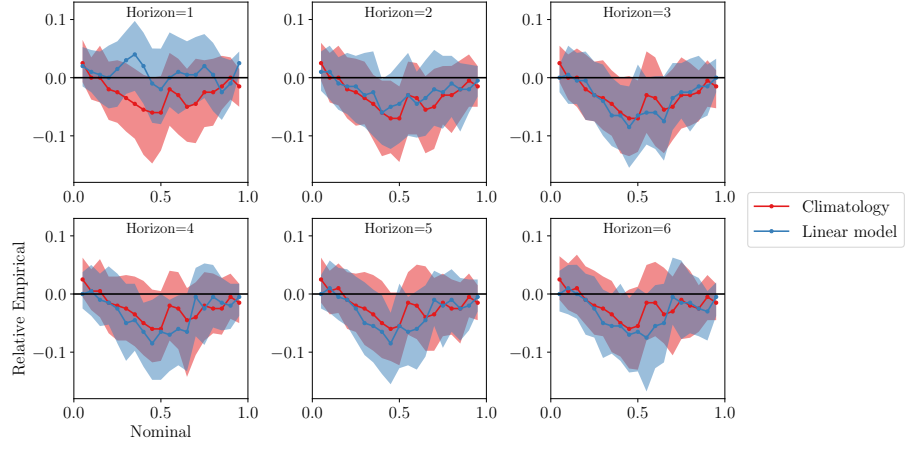


Figure S21: Reliability of variability forecast at WF2b. Intervals show 95% bootstrapped confidence bands.

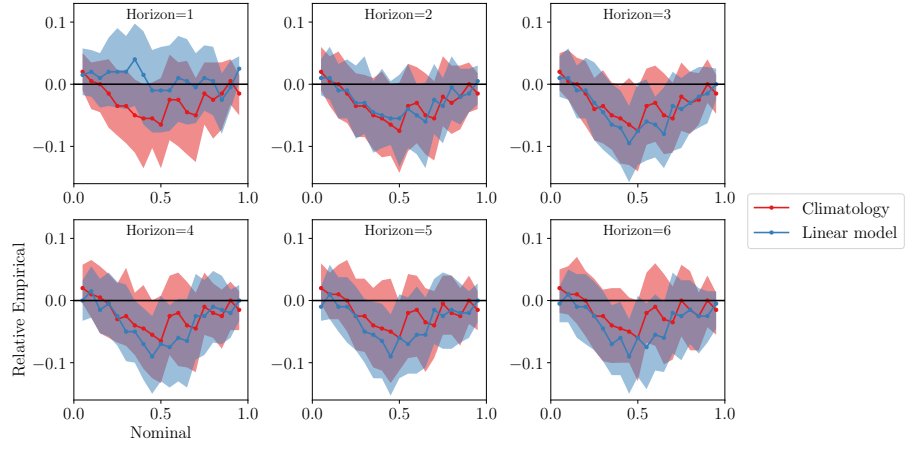


Figure S22: Reliability of variability forecast at WF2c. Intervals show 95% bootstrapped confidence bands.

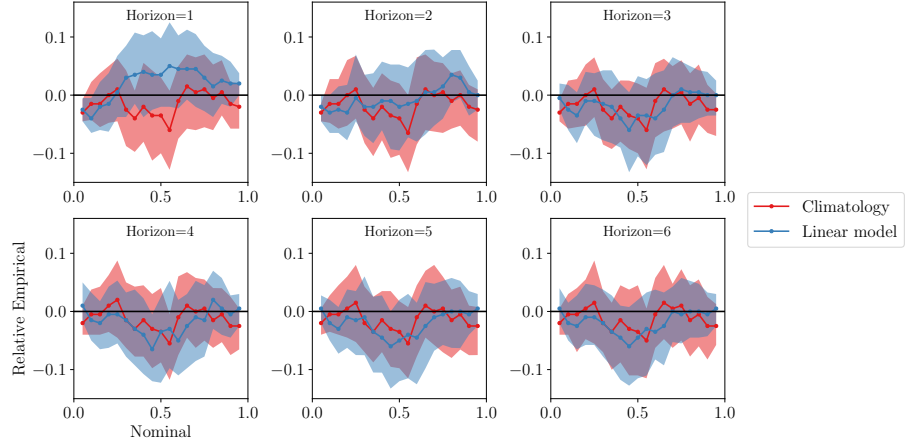


Figure S23: Reliability of variability forecast at WF3. Intervals show 95% bootstrapped confidence bands.

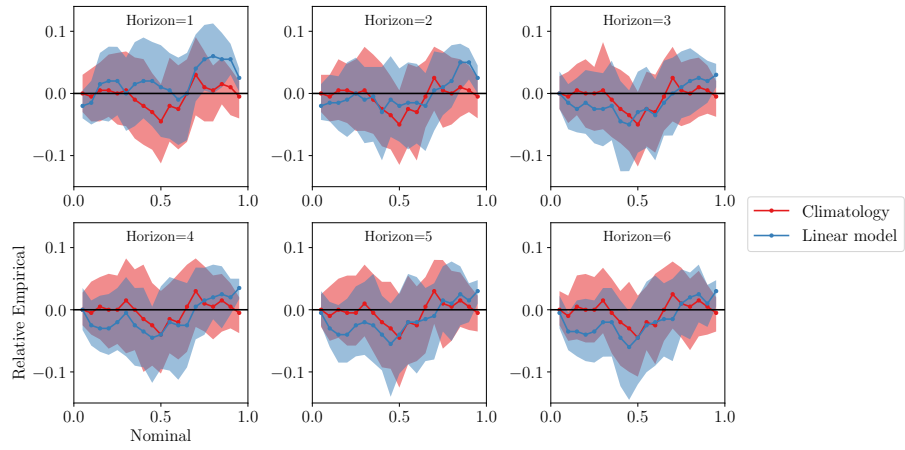


Figure S24: Reliability of variability forecast at WF4a. Intervals show 95% bootstrapped confidence bands.

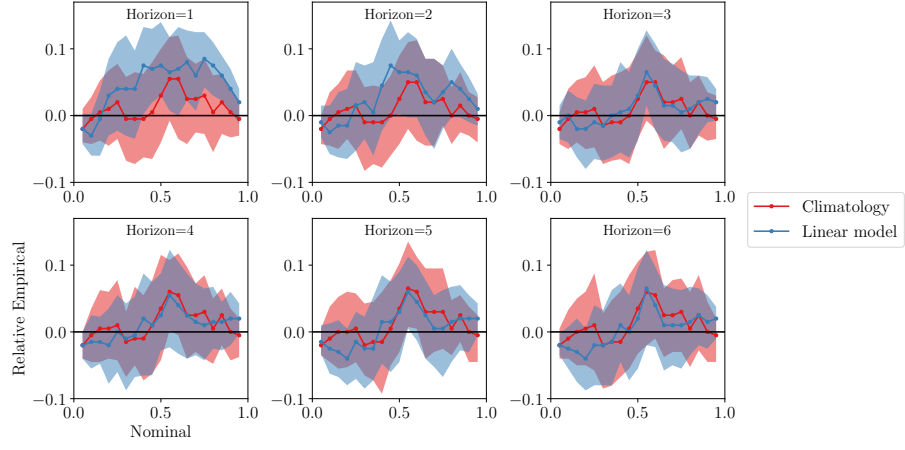


Figure S25: Reliability of variability forecast at WF4b. Intervals show 95% bootstrapped confidence bands.

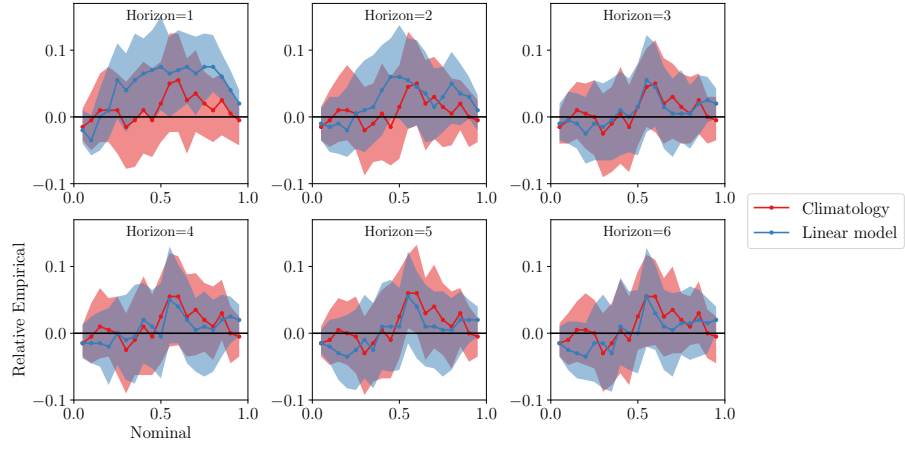


Figure S26: Reliability of variability forecast at WF4c. Intervals show 95% bootstrapped confidence bands.

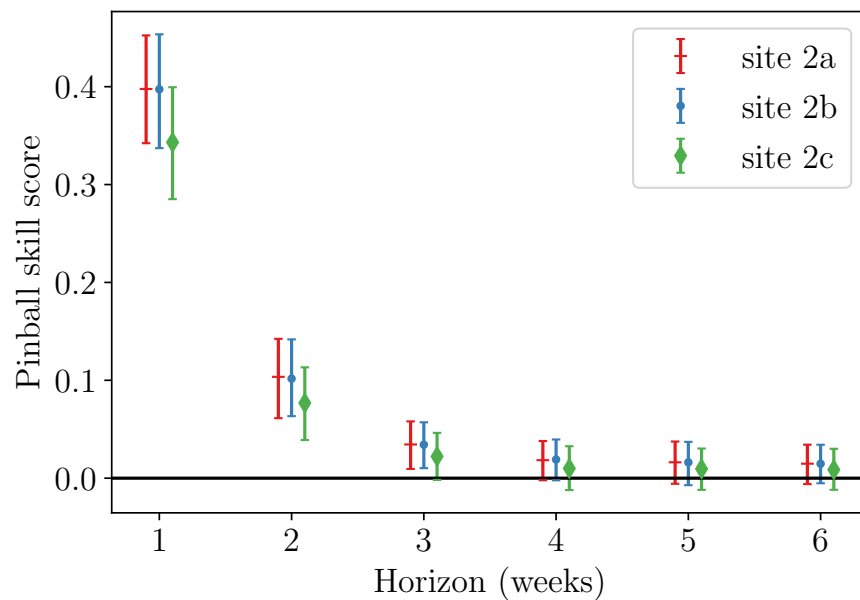


Figure S27: Pinball skill score of weather window index relative to climatology. for area 2. Error bars show 95% bootstrapped confidence intervals.

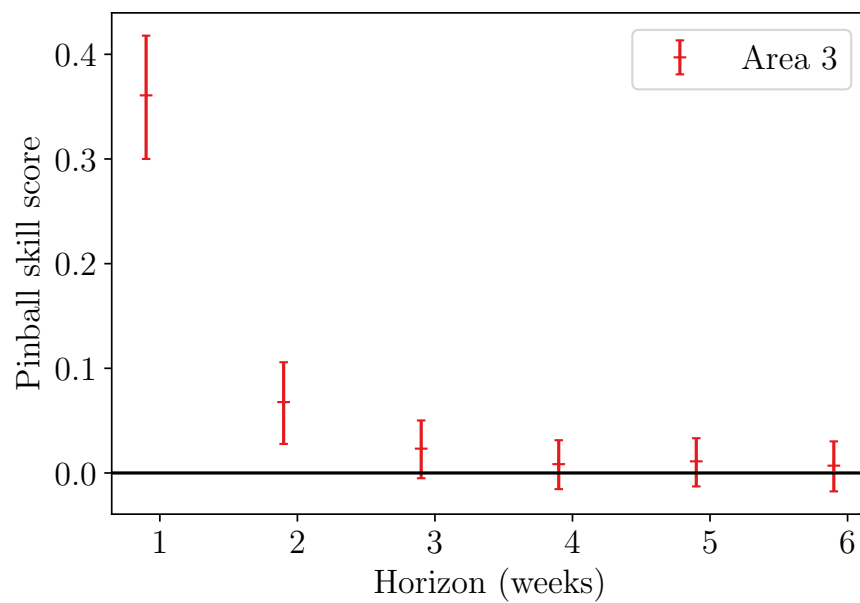


Figure S28: Pinball skill score of weather window index relative to climatology. for area 3. Error bars show 95% bootstrapped confidence intervals.

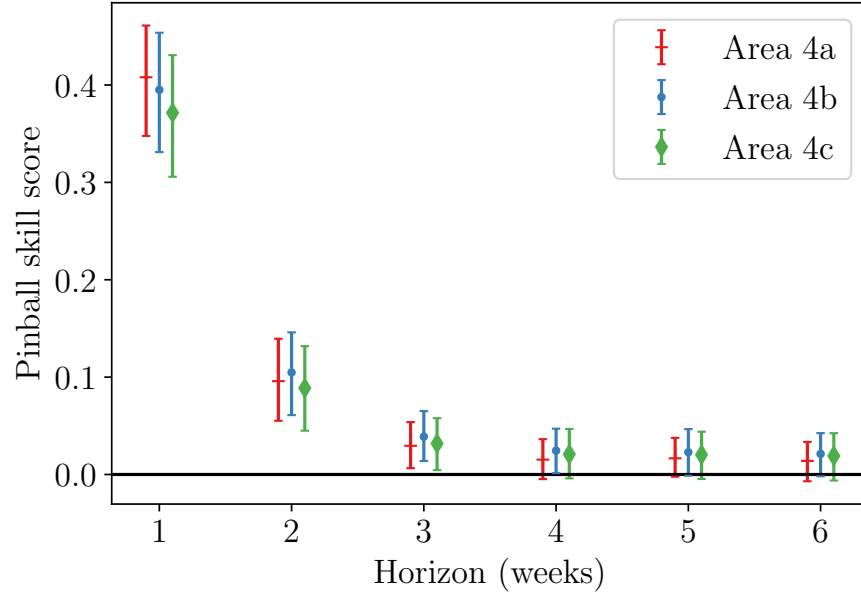


Figure S29: Pinball skill score of weather window index relative to climatology. for area 4. Error bars show 95% bootstrapped confidence intervals.

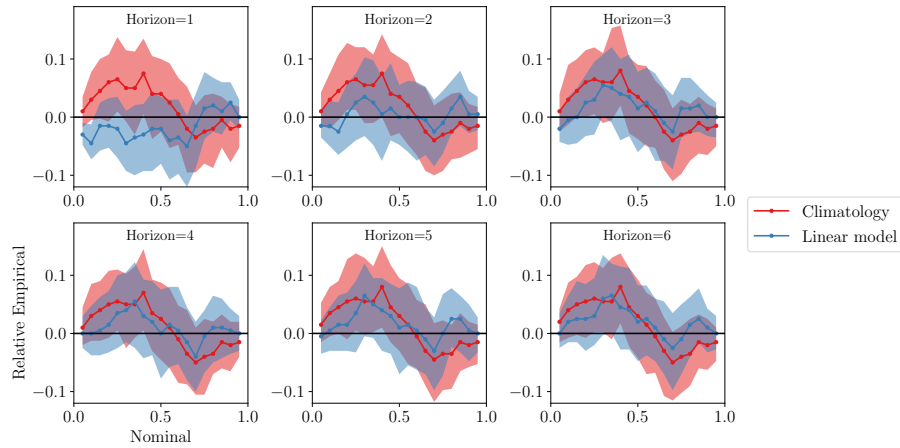


Figure S30: Reliability of weather window index forecast at WF2a. Intervals show 95% bootstrapped confidence bands.

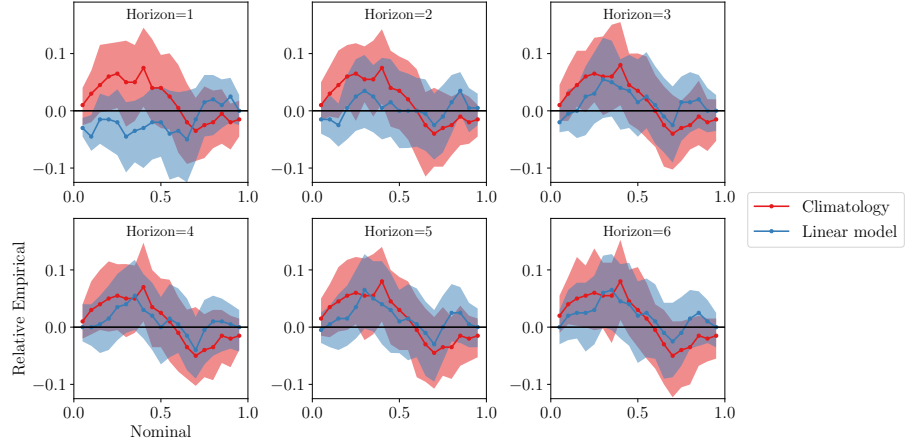


Figure S31: Reliability of weather window index forecast at WF2b. Intervals show 95% bootstrapped confidence bands.

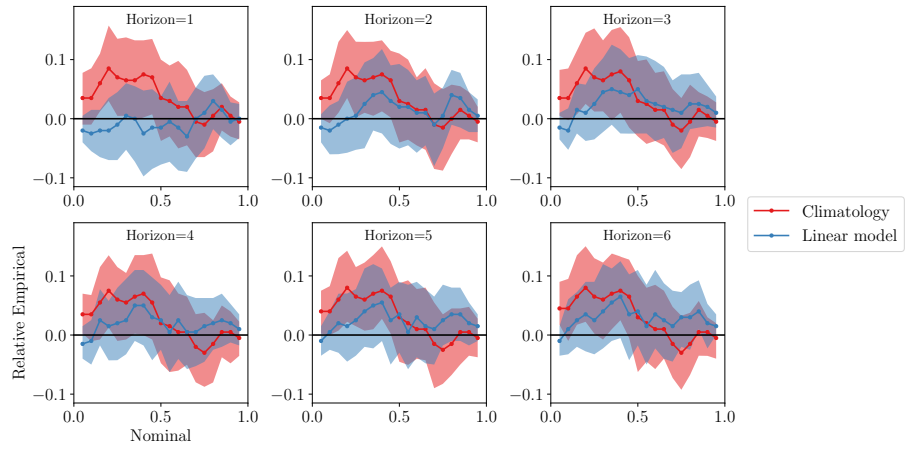


Figure S32: Reliability of weather window index forecast at WF2c. Intervals show 95% bootstrapped confidence bands.

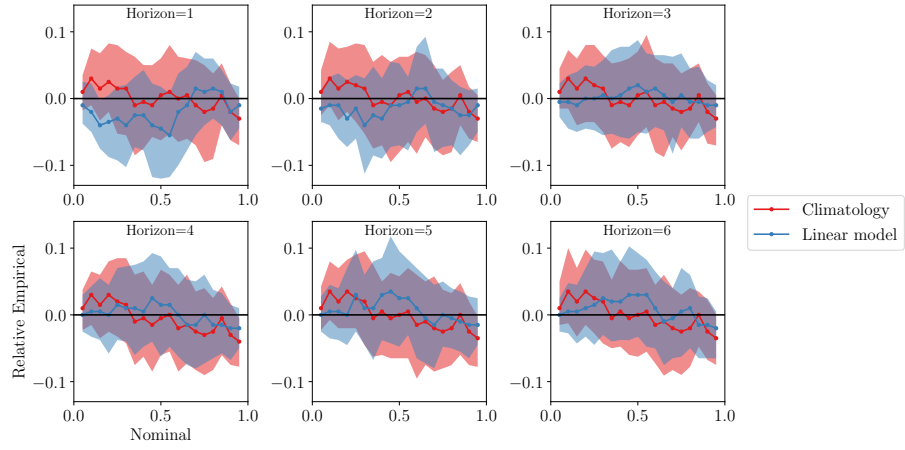


Figure S33: Reliability of weather window index forecast at WF3. Intervals show 95% bootstrapped confidence bands.

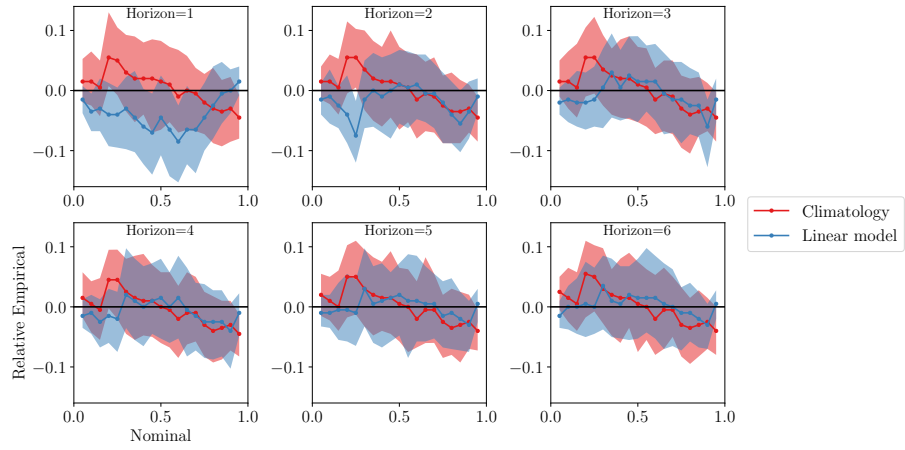


Figure S34: Reliability of weather window index forecast at WF4a. Intervals show 95% bootstrapped confidence bands.

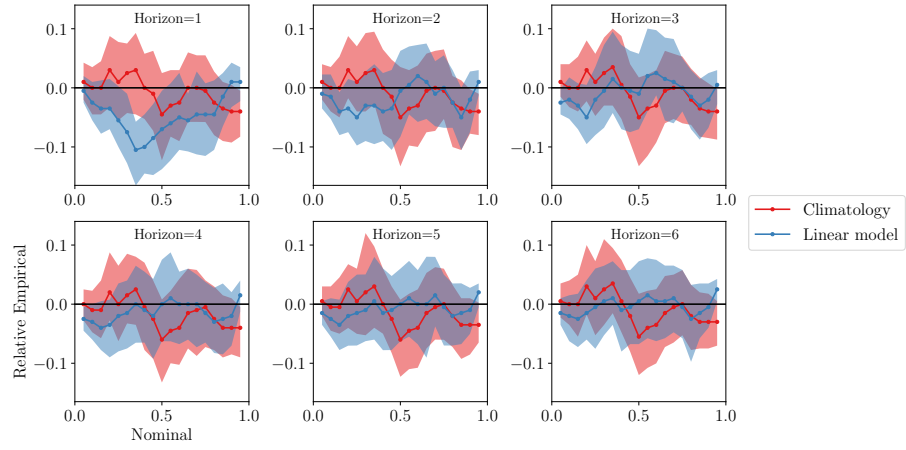


Figure S35: Reliability of weather window index forecast at WF4b. Intervals show 95% bootstrapped confidence bands.

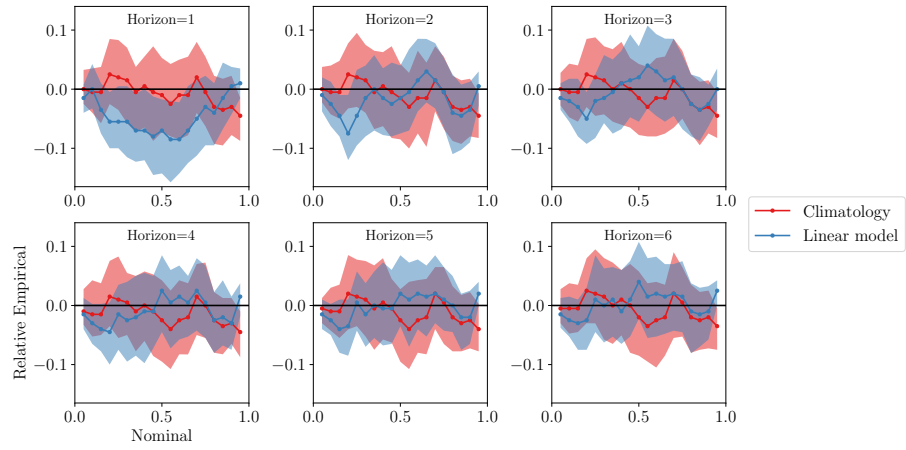


Figure S36: Reliability of weather window index forecast at WF4c. Intervals show 95% bootstrapped confidence bands.