
Supporting Information

Excess sludge disintegration by discharge plasma coupled with thiosulfate

Hekai Jin^{1,4#}, Song Lin^{2#}, Yueyun Yang^{1,4}, Zhixin Liang^{1,4}, Yiqi Chen^{1,4}, Lei Hua^{1,4},

Ying Zhang³, Hongtao Jia⁵, Guodong Zhang^{1,4*}, Tiecheng Wang^{1,4*}

¹College of Natural Resources and Environment, Northwest A&F University,
Yangling, Shaanxi Province 712100, PR China

²Wuchang University of Science and Technology, Wuhan, Hubei Province, PR China

³College of Information Science and Technology, Nanjing Forestry University,
Nanjing 210037, China

⁴Key Laboratory of Plant Nutrition and the Agri-environment in Northwest China,
Ministry of Agriculture, Yangling, Shaanxi 712100, PR China

⁵College of Resources and Environment, Xinjiang Agricultural University, Urumqi
830052, China

Jin and Lin contributed equally to this study

*Corresponding author: Tiecheng Wang, Guodong Zhang E-mail:

wangtiecheng2008@126.com; 947596309@qq.com

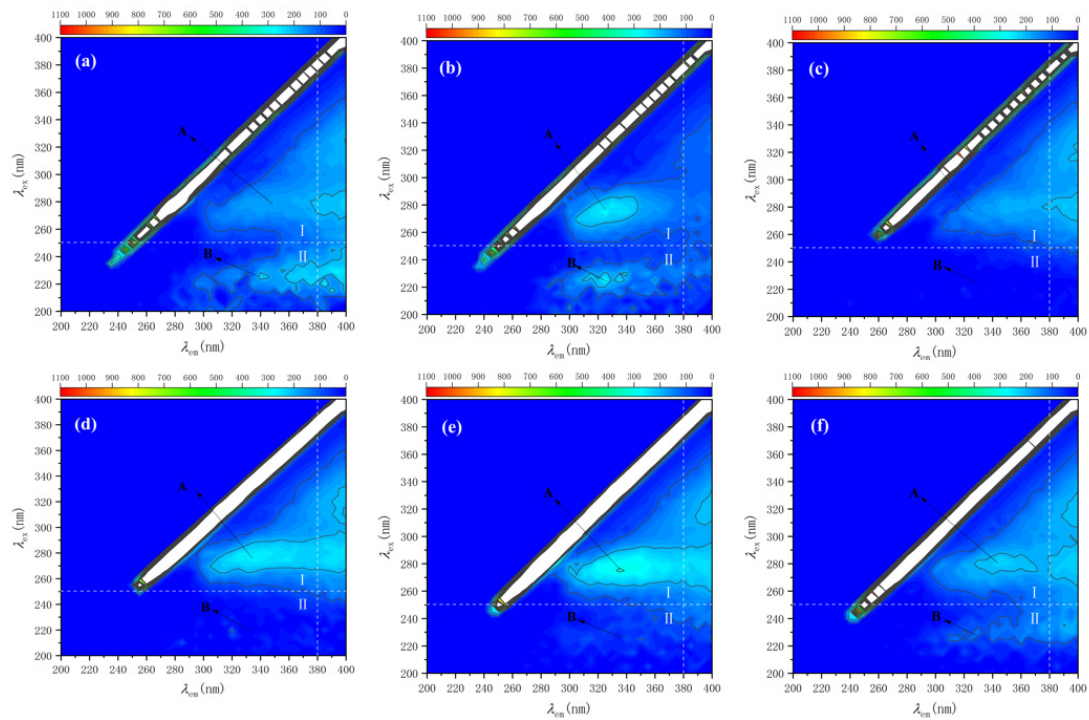


Figure S1. 3D-EEM of S-EPS (a: Raw sludge; b: plasma treatment for 20 min; c-f: discharge plasma coupled with TSA treatment for 5, 10, 15, and 20 min, respectively).

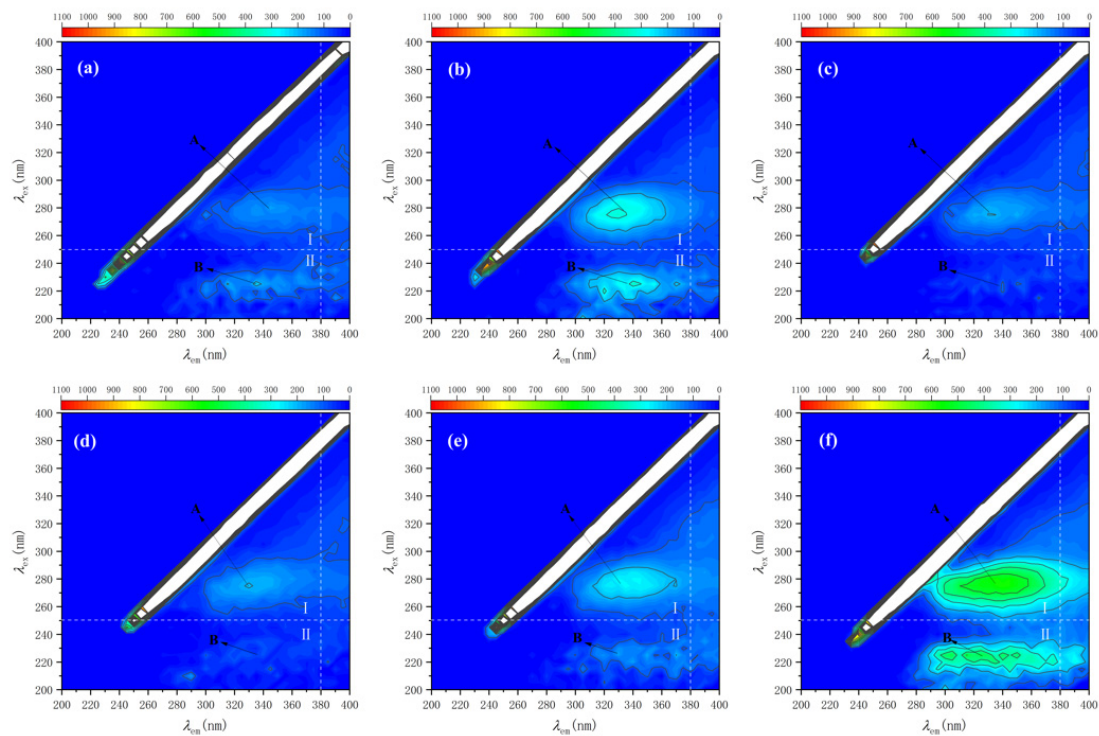


Figure S2. 3D-EEM of LB-EPS (a: Raw sludge; b: plasma treatment for 20 min; c-f: discharge plasma coupled with TSA treatment for 5, 10, 15, and 20 min, respectively).

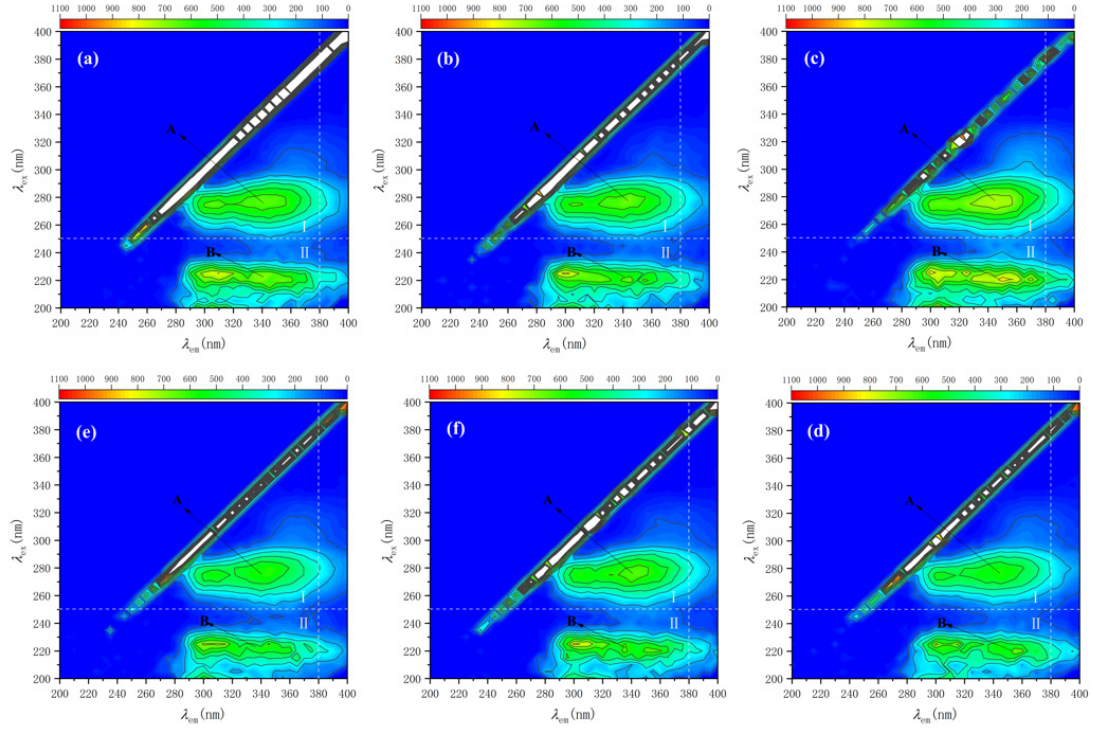


Figure S3. 3D-EEM of TB-EPS (a: Raw sludge; b: plasma treatment for 20 min; c-f: discharge plasma coupled with TSA treatment for 5, 10, 15, and 20 min, respectively).