

Supplementary Material

Removal performances of turbidity, organics, and $\text{NH}_4\text{-N}$ in a modified settling tank with rotating biological discs used for enhanced drinking water purification

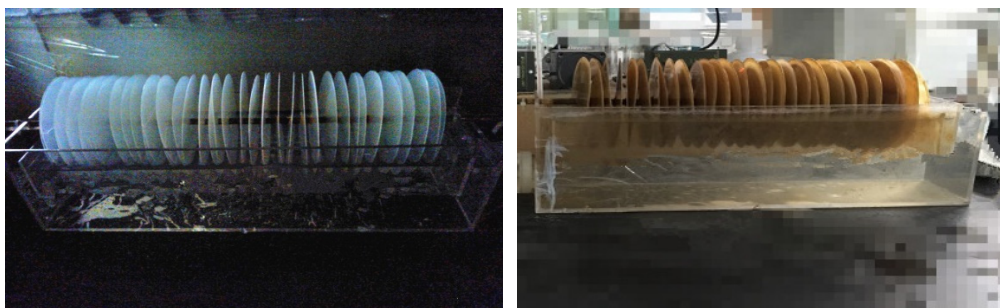


Figure S1 Modified horizontal flow settling tank before and after experiments

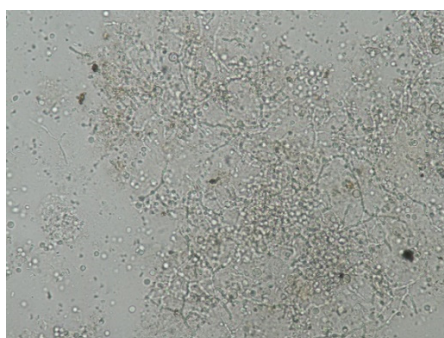


Figure S2 The shape of mature biofilm observed by an optical microscope

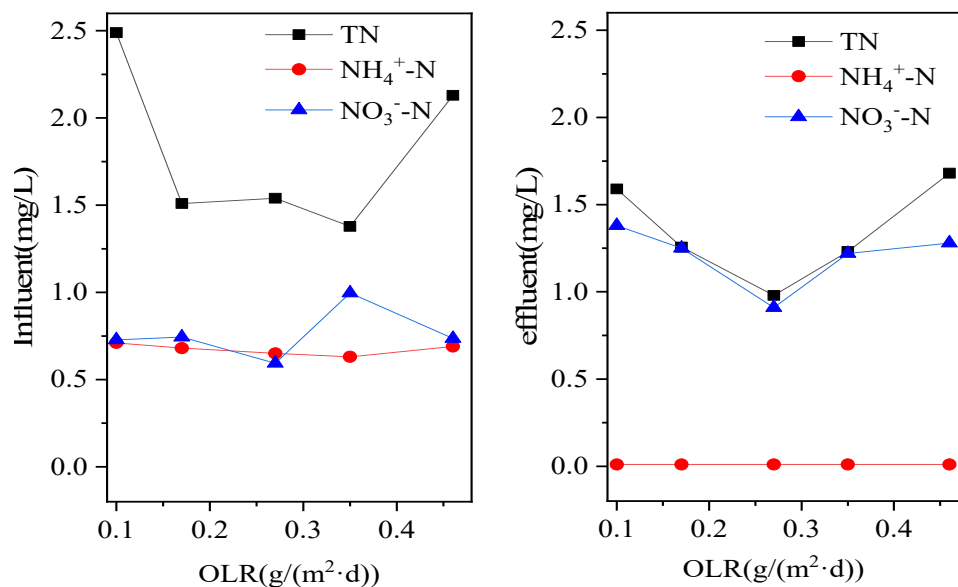


Figure S3 Variation of TN, $\text{NH}_4^+\text{-N}$ and $\text{NO}_3^-\text{-N}$ in influent(a) and effluent(b) at different organic loading rates (HRT=2.0 h, disc rotating speed = 3.0 r/min).

Table S1 Quality of the raw water sampled from Heihe reservoir

Items	Variation range	Average value
pH	7.1-7.5	7.3
Turbidity (NTU)	6.70-8.20	7.50
TOC (mg/L)	3.76-4.72	4.24
$\text{NH}_4^+\text{-N}$ (mg/L)	1.94-2.50	2.22
TP (mg/L)	0.11-0.24	0.18
$\text{NO}_2^-\text{-N}$ (mg/L)	0.02-0.03	0.025
$\text{NO}_3^-\text{-N}$ (mg/L)	0.59-1.00	0.80