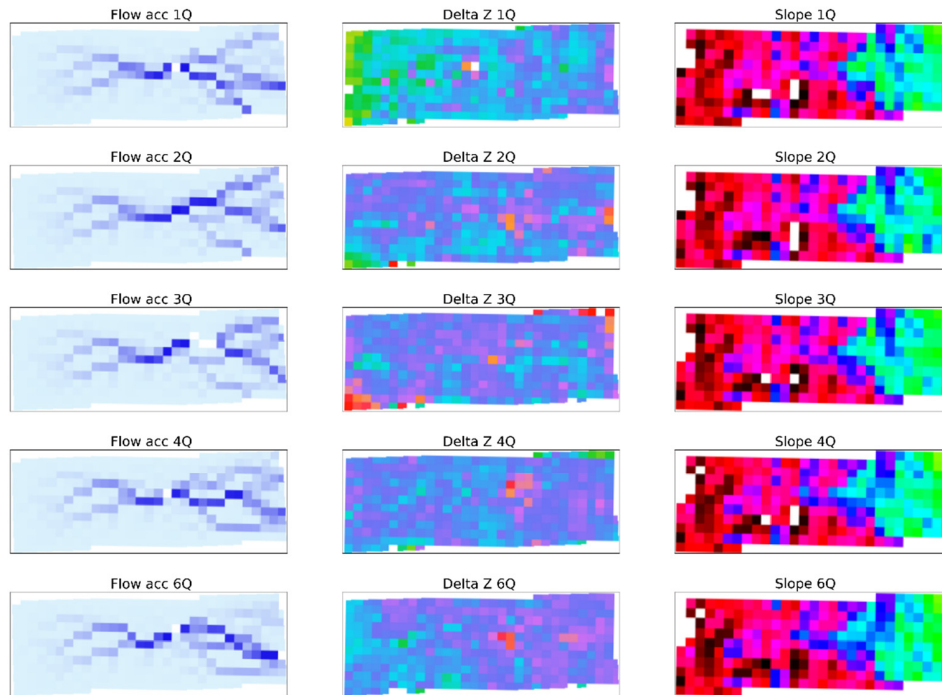
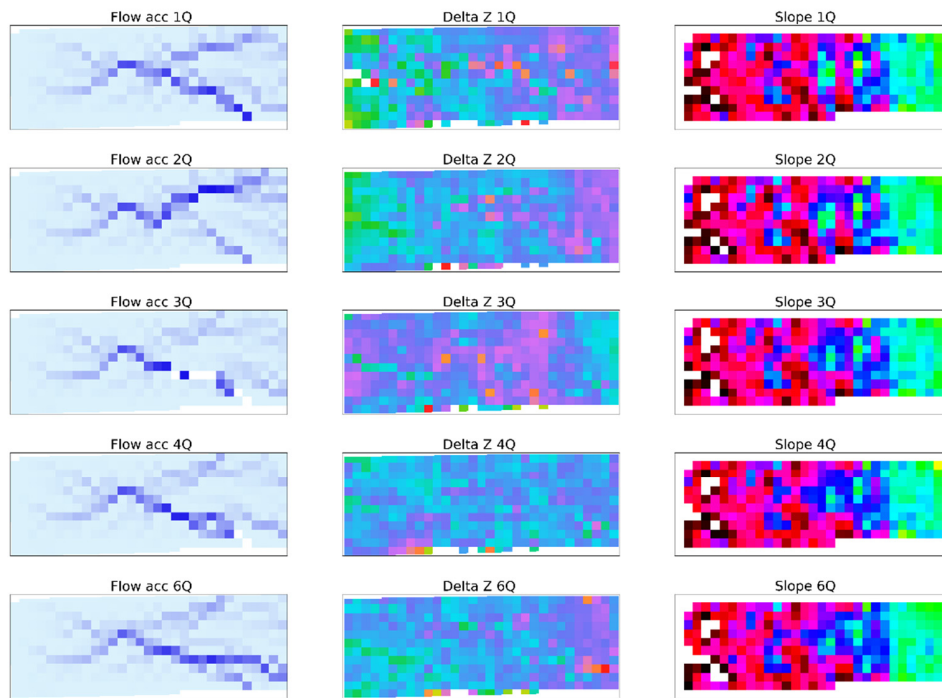


S1: Flow accumulation (Flow acc.), elevation change (Delta Z) and slope maps obtained after incremental rainfall/runoff events 1Q, 2Q, 3Q, 4Q and 6Q from the 9.75 m x 3.66 m plots. Q = 0.24 m³

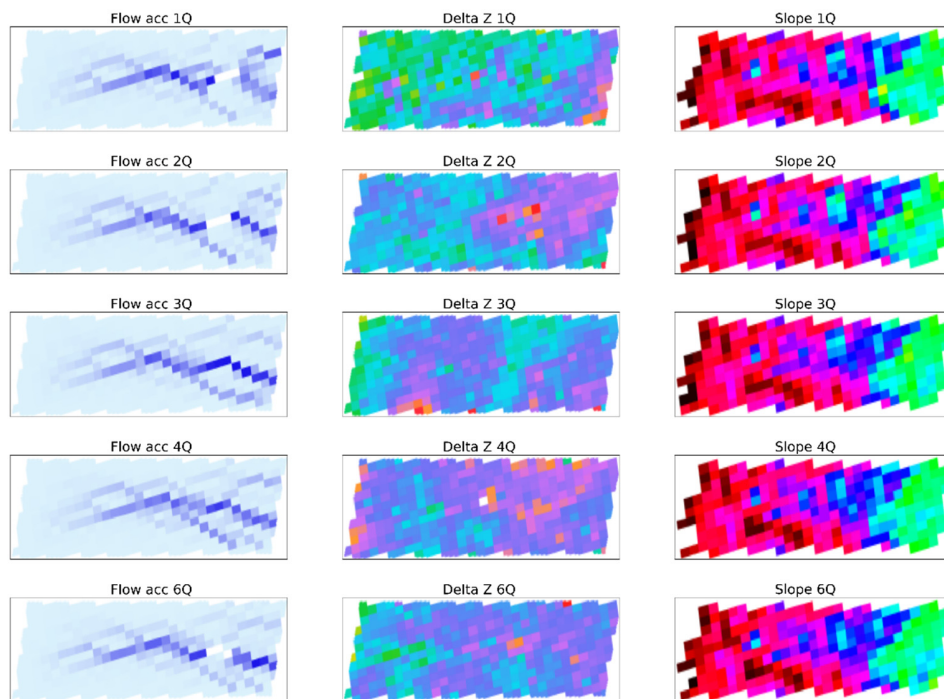
Drainage condition, Low flow, Run 1



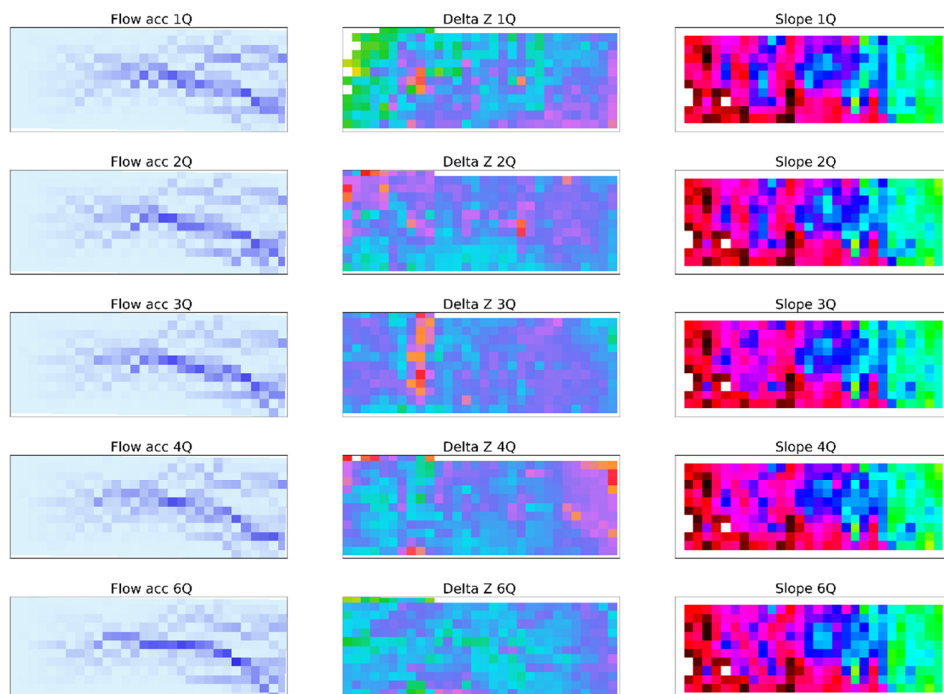
Drainage condition, Low flow, Run 2



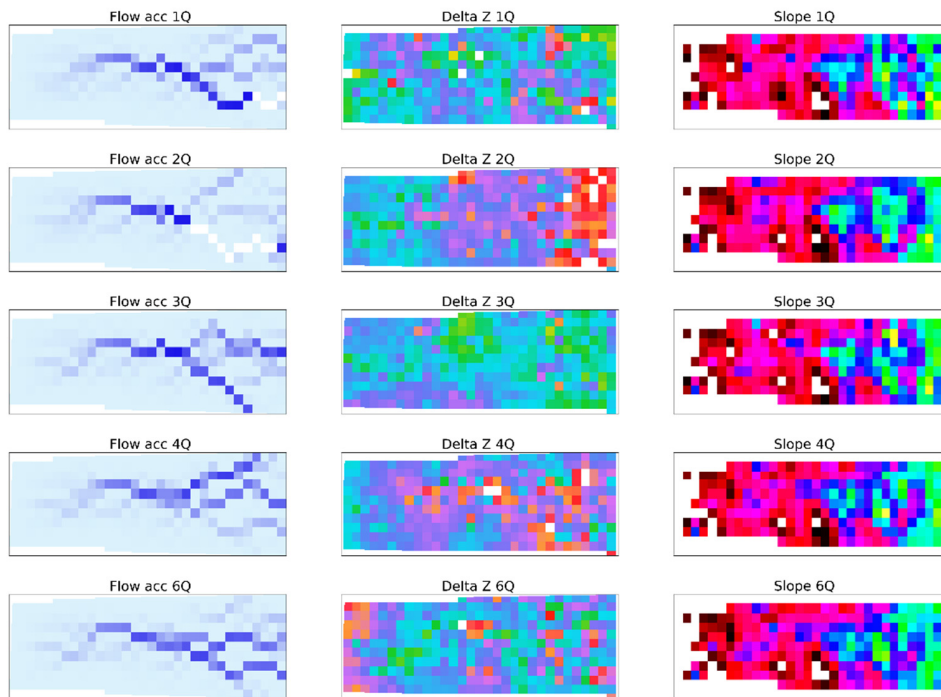
Drainage condition, High flow, Run 1



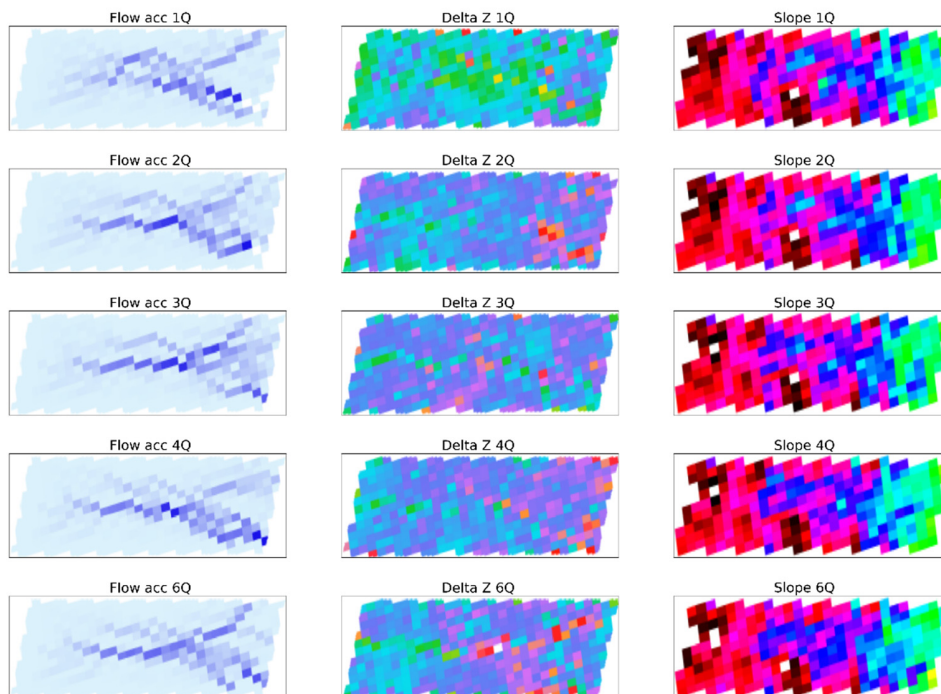
Drainage condition, High flow, Run 2



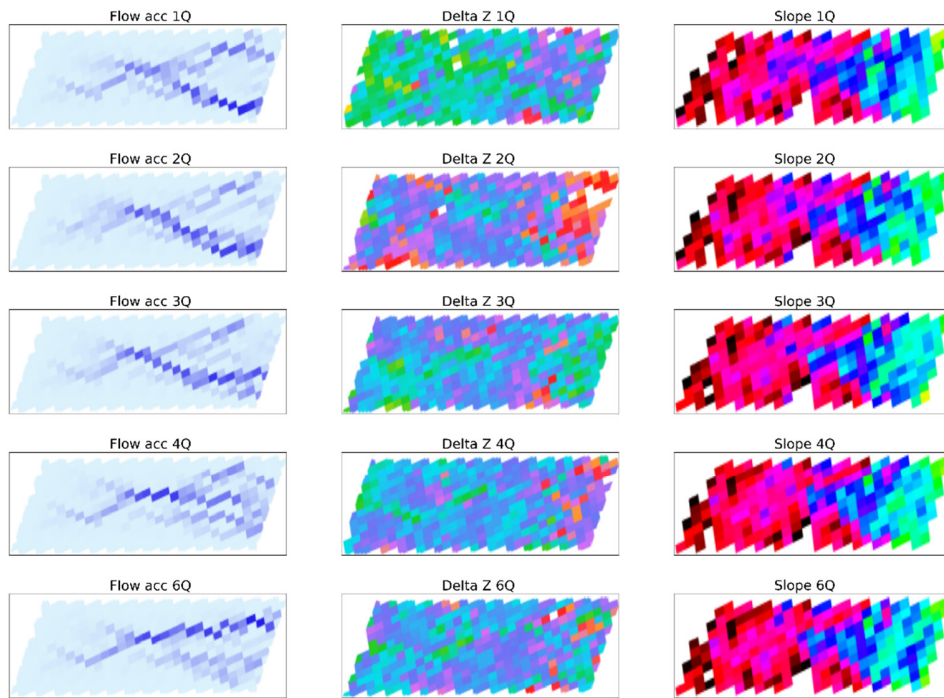
Seepage condition, Low flow, Run 1



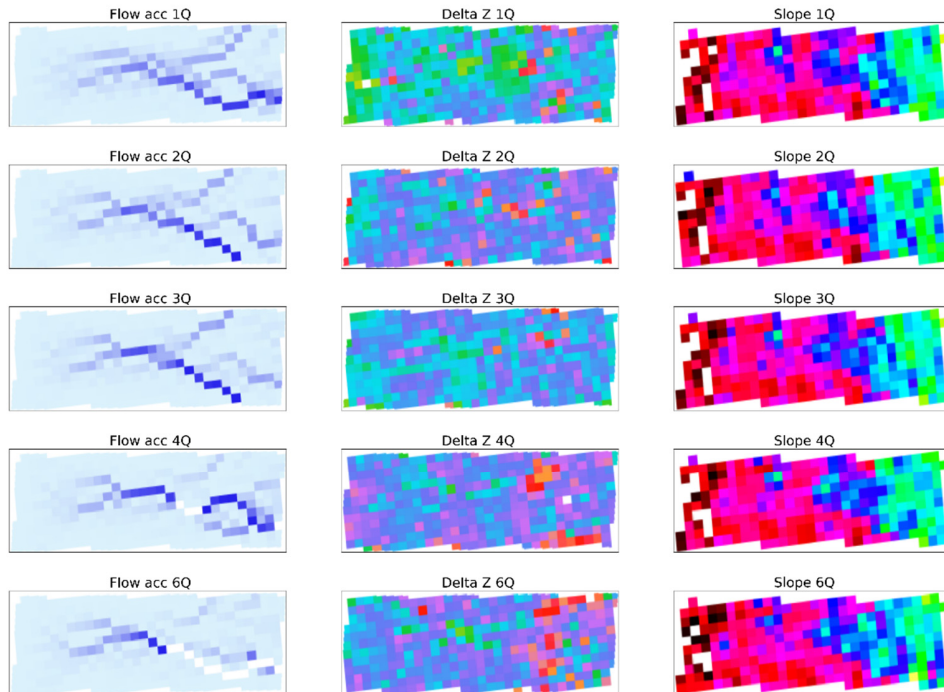
Seepage condition, Low flow, Run 2



Seepage condition, High flow, Run 1



Seepage condition, High flow, Run 2



Flow direction is left to right on all maps

Legend

