

Figure S1. Experimental design

Table S1. Mean and SEM of sows feed intake, fat, dry matter, metabolizable energy

Items	Sows daily intake (kg x day ⁻¹)			
	ADFI	FAT	DM	ME (MJ/day)
Diet				
SO	4.84 ^a	218.8 ^a	4.25 ^a	63.66 ^a
HO	4.86 ^a	219.3 ^a	4.27 ^a	63.90 ^a
Period				
12 h-10 d	3.56 ^a	0.161 ^a	3.13 ^a	46.9 ^a
10 d-21 d	5.01 ^b	0.227 ^b	4.41 ^b	66.0 ^b
12 h-21 d	5.96 ^c	0.269 ^c	5.24 ^c	78.4 ^c
SEM	0.21	10.5	0.21	3.06
<i>p</i> -Value				
Diet	NS	NS	NS	NS
Period	**	***	***	***
Diet x Period	NS	NS	NS	NS

Abbreviations: average daily feed intake, ADFI; standard error of the mean, SEM.

^a, ^b, ^c Different superscript letters indicate significantly different means; NS: nonsignificant effect; ** $p < 0.01$ and *** $p \leq 0.0001$ highly significant difference between means.

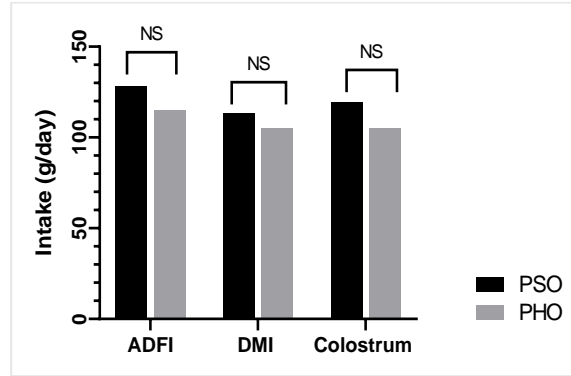


Figure S2. ADFI, fat and colostrum intake of piglets from sows fed a SO diet (PSO) or a HO diet based on a high level of n-3 fatty acids and lower n-6: n-3 ratio (PHO).

Abbreviations: average daily feed intake, ADFI; NS: nonsignificant effect ** $p < 0.01$ and *** $p \leq 0.001$ highly significant difference between means

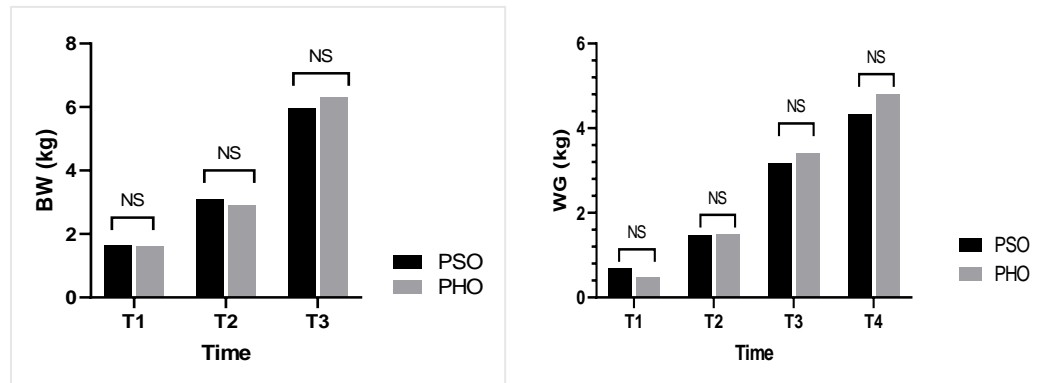


Figure S3. Growth parameters of piglets: BW of piglets from sows fed a SO diet (PSO) or a HO diet based on a high level of n-3 fatty acids and lower n-6: n-3 ratio (PHO) at different time points after farrowing: T1 (12h), T2 (10 days), and T3 (21days). Abbreviations: body weight, BW; PSO – piglets from sows fed SO diet; PHO – piglets from sows fed FO diet. NS: nonsignificant effect.