

Figure S1. Flow cytometric analysis of Jurkat cell line treated with mRNA-based COVID-19 vaccines

SSC and FSC parameters of untreated (panel A), 1 μ l and 10 μ l Comirnaty-treated (panels B and C, respectively) and 1 μ l and 10 μ l Spikevax-treated (panels E and F, respectively) Jurkat cells (representative experiment). The percentage of dead and alive cells is reported.

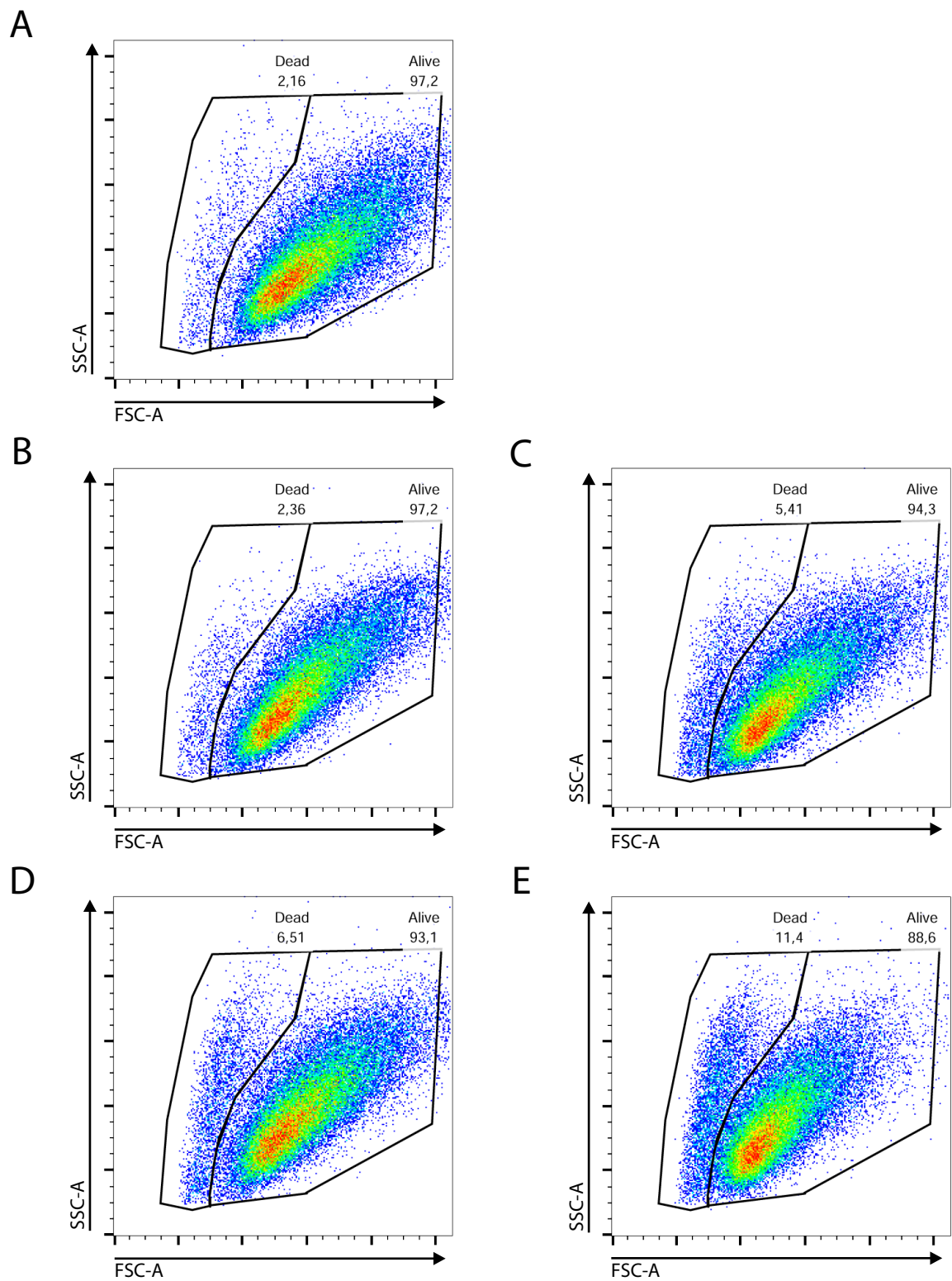


Figure S2. Flow cytometric analysis of K562 cell line treated with mRNA-based COVID-19 vaccines

SSC and FSC parameters of untreated (panel A), 1 μ l and 10 μ l Comirnaty-treated (panels B and C, respectively) and 1 μ l and 10 μ l Spikevax-treated (panels E and F, respectively) K562 cells (representative experiment). The percentage of dead and alive cells is reported.