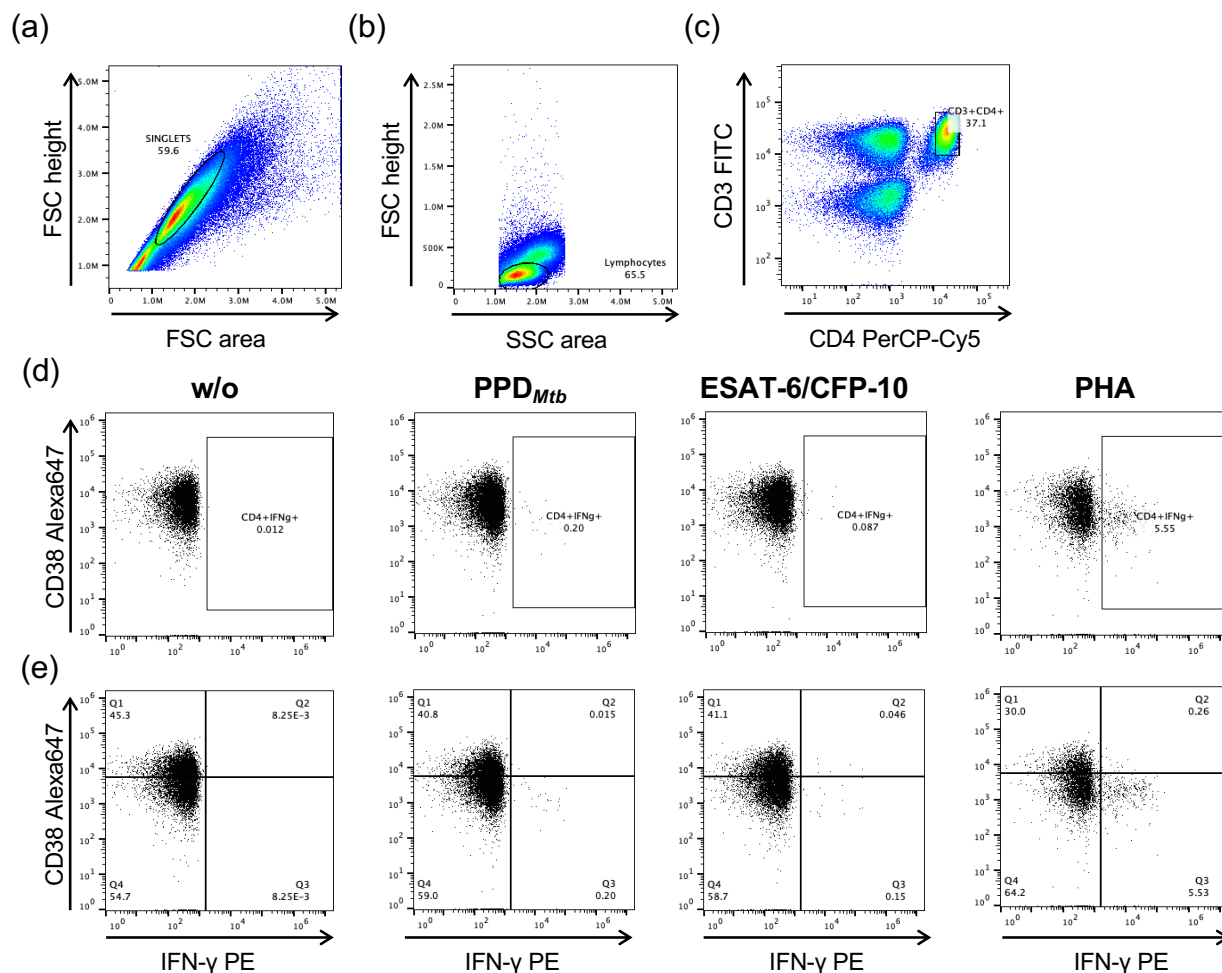


Supplementary Figure 1



Flow cytometry gating strategy for quantification of IFN- γ ⁺ CD4⁺ T-cell proportions and CD38 co-expression. The following steps for analysis are performed: (a) Exclusion of cell doublets by correlating forward scatter area and height measurements; (b) Gating of lymphoid cells by size and granularity determination; (c) Gating of CD3⁺/CD4⁺ T cells; (d) Quantification of CD3⁺/CD4⁺ T cells expressing IFN- γ in differentially stimulated samples (mean of duplicates). Unstimulated samples (w/o) were subtracted from PPD_{Mtb}, ESAT-6/CFP-10, and phytohemagglutinin (PHA) stimulated samples; (e) Proportions of CD38⁺ CD3⁺/CD4⁺ T cells were calculated by dividing the number of cells from the upper right and the lower quadrants (background numbers are subtracted as for (d)) and multiplied with 100 to get proportions.