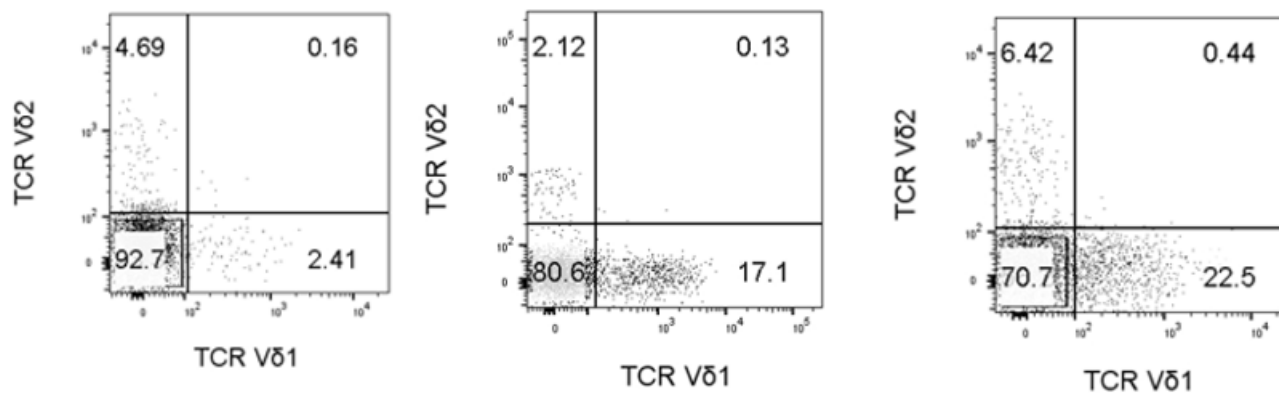
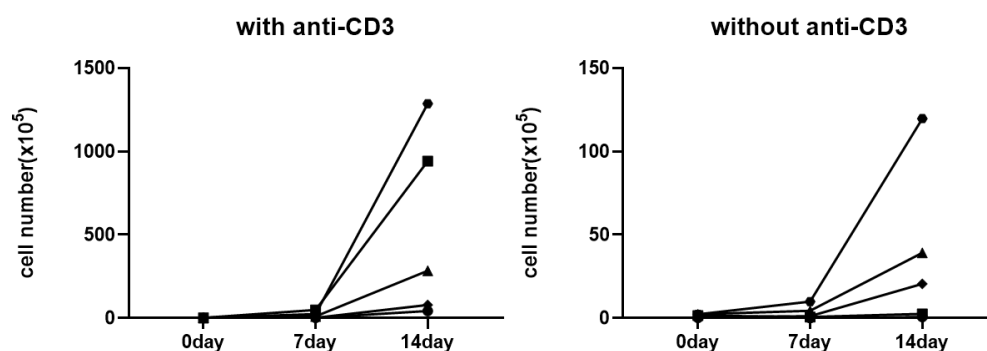




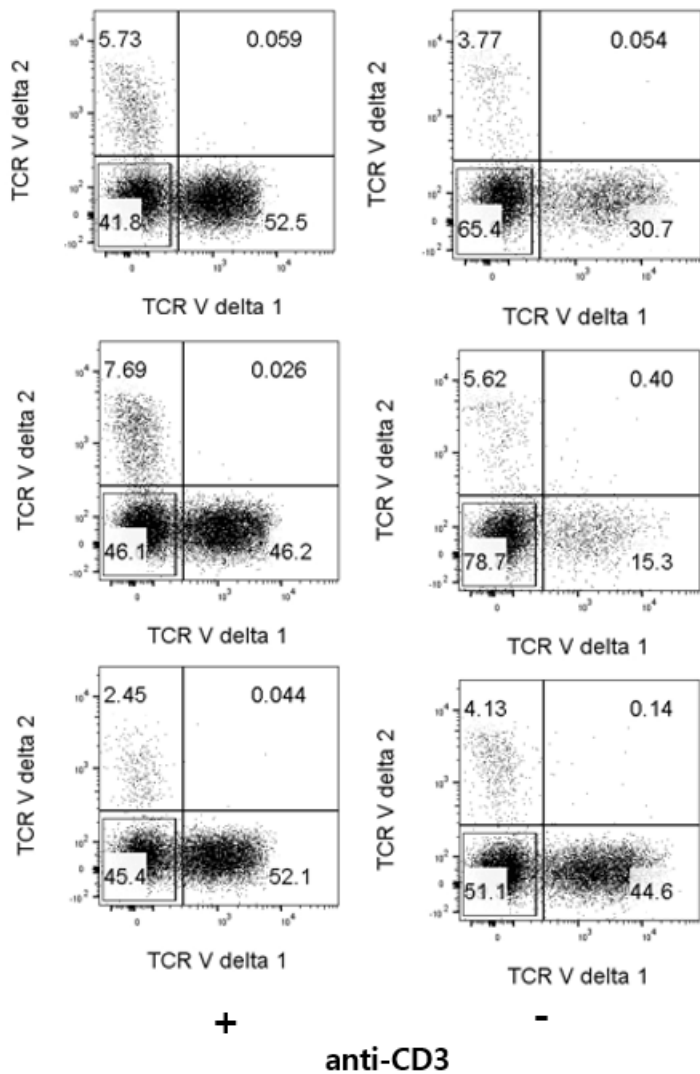
Supplementary Figure S1. Representative plot of distribution of V δ 1, V δ 2, and V δ 1-V δ 2- $\gamma\delta$ T cells after negative isolation with magnetic beads from cord blood samples.



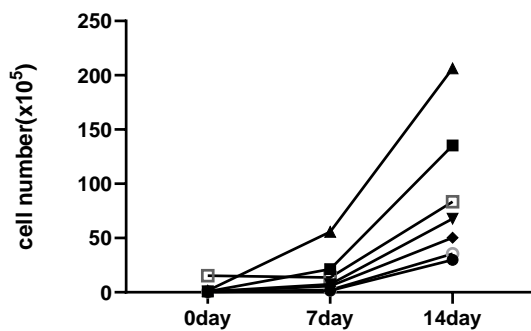
Supplementary Figure S2. Absolute cell number of V δ 1+ T cells presence or absence of anti-CD3 antibody in culture for two weeks. The absolute cell numbers of 5 cordblood units increased. (n=5)



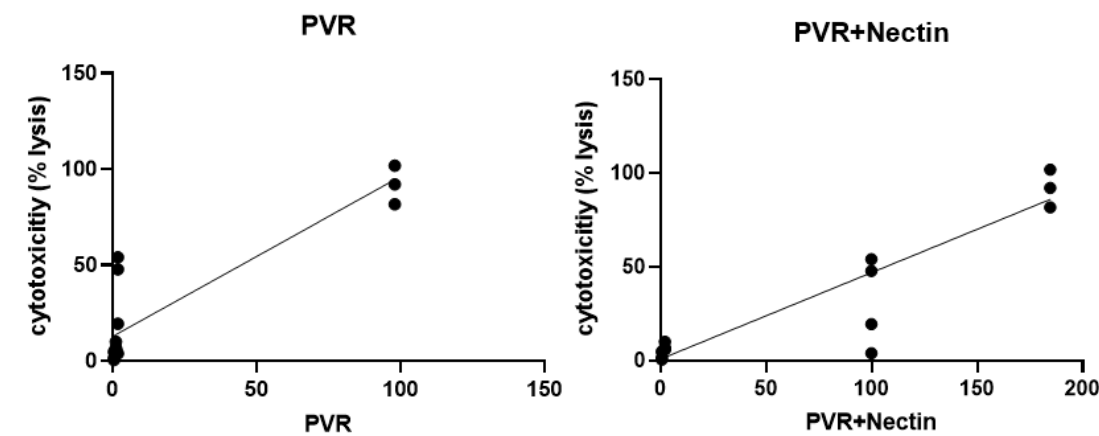
Supplementary Figure S3. Representative plot of distribution of V δ 1+, V δ 2+, and V δ 1-V δ 2- $\gamma\delta$ T cells according to the presence or absence of anti-CD3 antibody in culture for two weeks.



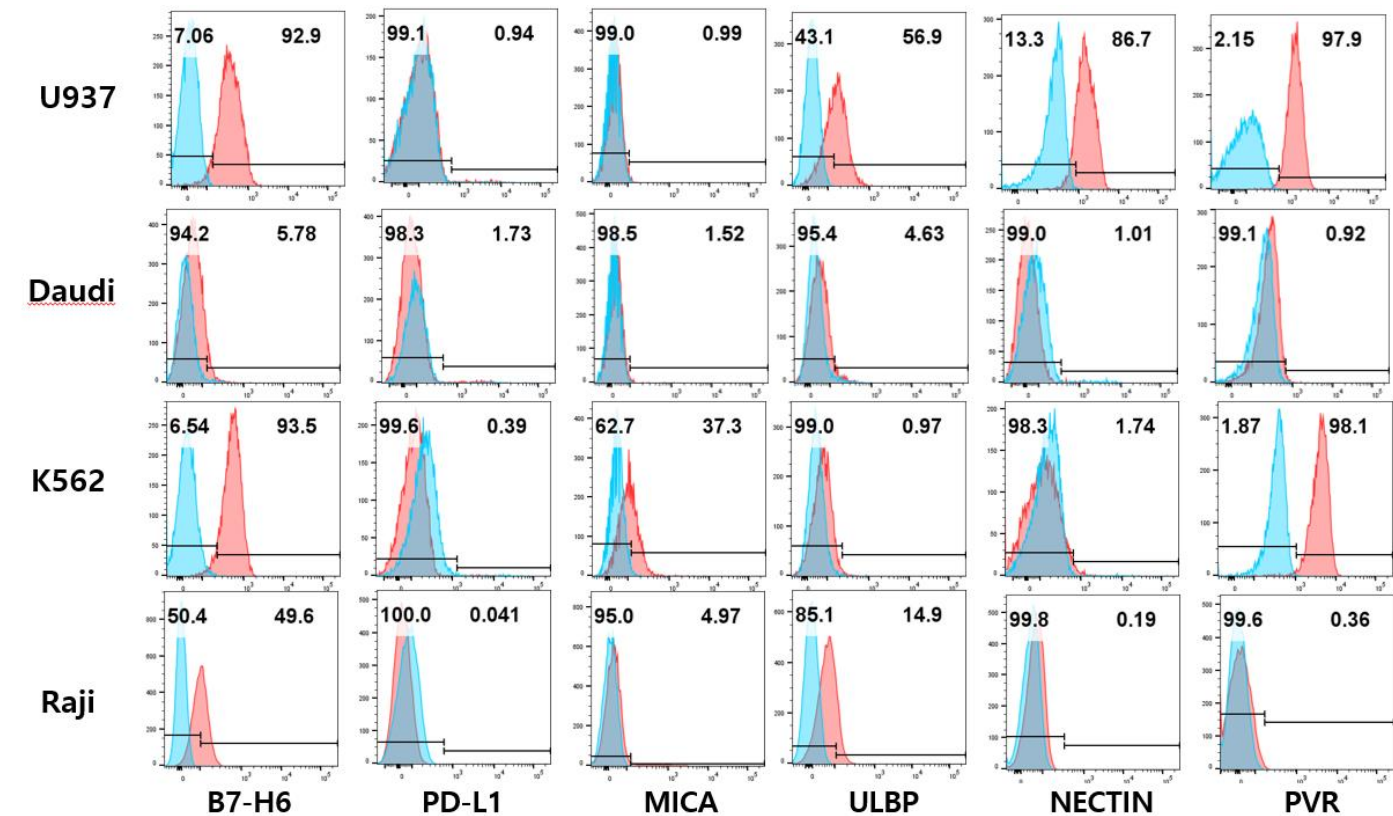
Supplementary Figure S4. Absolute cell number of V δ 1+ T cells with anti-CD3 antibody and aAPCs in culture for two weeks. The absolute cell numbers of 7 cordblood units increased. (n=7)



Supplementary Figure S5. Correlation analysis between the expression rate of each ligand.



Supplementary Figure S6. Representative flow cytometry data of target cell ligands expression.



Supplementary Figure S7. Result of a blocking test for these receptors using antibodies against DNAM-1 and NKG2D expressed in Vd1+ T cells.

