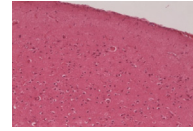
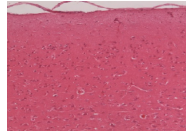


Table S1. Histopathological changes of internal organs after single or multiple subcutaneous injections with 125 µg dose of PLVF.

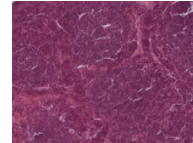
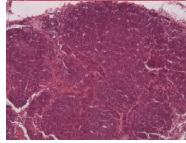
Organs and tissues	Histopathological changes	
	Acute toxicity test	Chronic toxicity test
Brain	NF	NF
Lymth nodes	NF	NF
Thyroid gland	NF	NF
Heart	NF	NF
Lung	NF	NF
Thymus	NF	NF
Stomach	NF	NF
Small intestine	NF	NF
Colon	NF	NF
Liver	NF	NF
Spleen	NF	NF
Kidney	NF	NF
Adrenal gland	NF	NF
Testicle	NF	NF
Ovary	NF	NF
Peyer's patches	NF	NF

Note: NF – not found

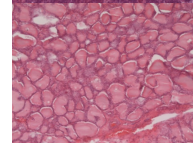
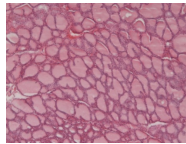
Brain



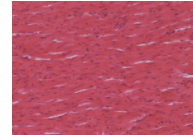
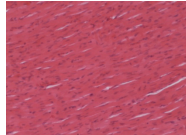
Lymph node



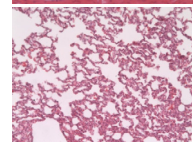
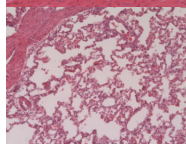
Thyroid gland



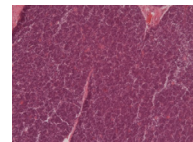
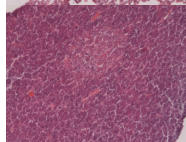
Heart



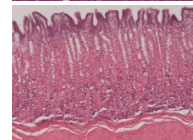
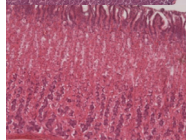
Lung



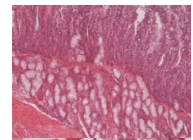
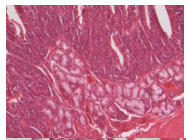
Thymus



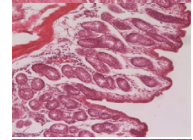
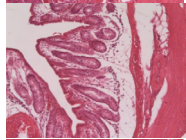
Stomach



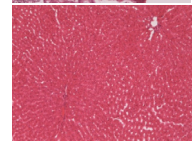
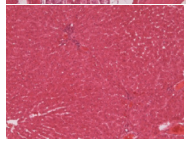
Small intestine



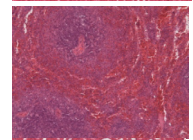
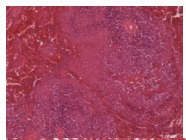
Colon



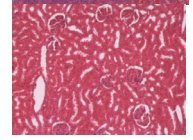
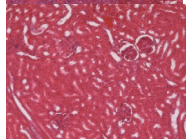
Liver



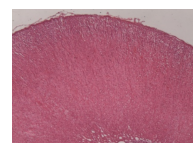
Spleen



Kidney



Adrenal gland



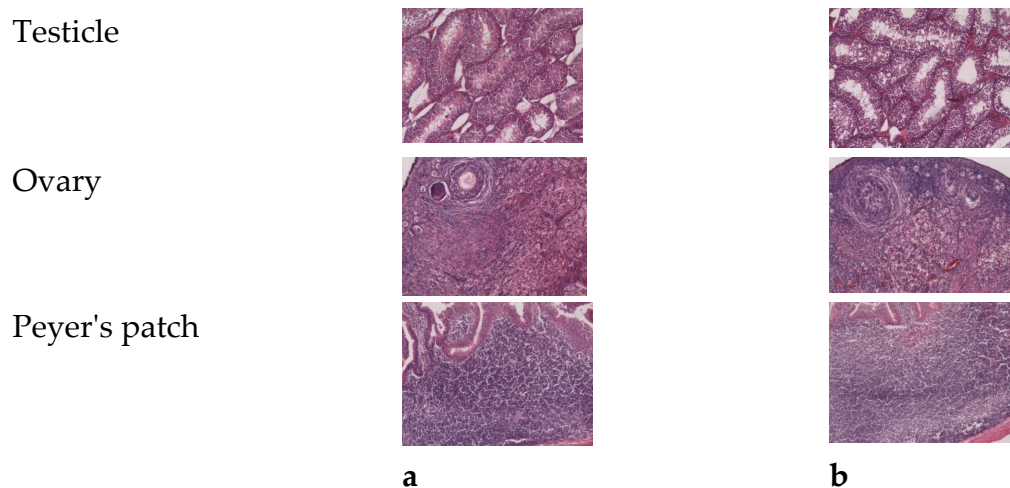


Figure S1. Hematoxylin and eosin stained sections of the internal organs of rabbits from the control group (a) and 7 days after the last injection of PLVF (b). PLVF was administered subcutaneously at a dose of 125  $\mu$ g daily for a week. Representative images from 5 groups

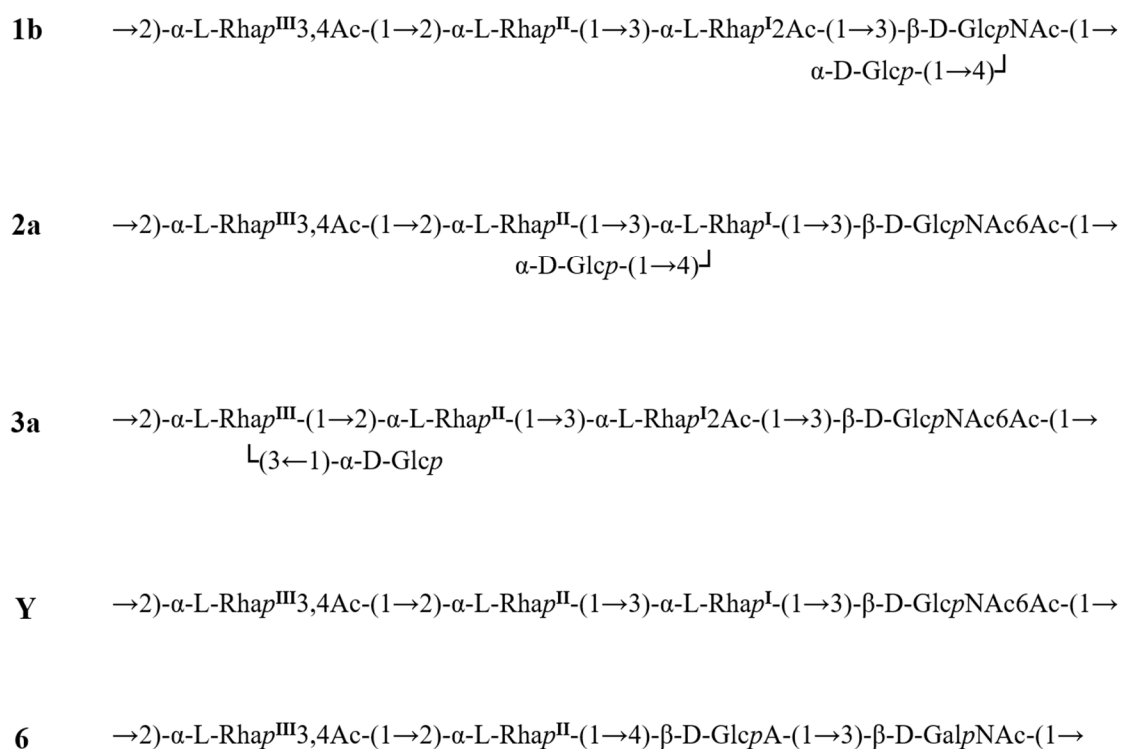


Figure S2. Chemical structure of the repeating unit of the O-specific polysaccharide chain of *S. flexneri* serotypes 1b, 2a, 3a, 6, and Y.