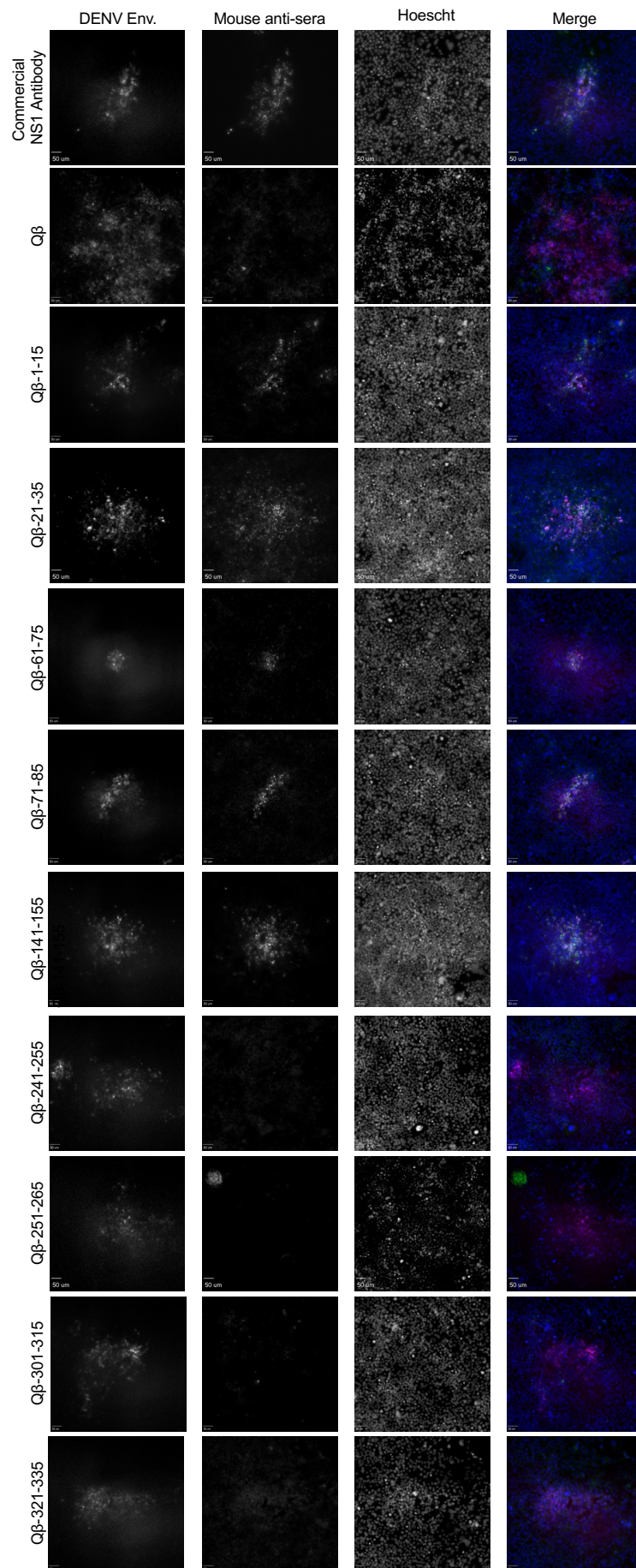


**Supplemental Figure S1. SDS-PAGE analysis of peptide-VLP conjugations.** Full, unaltered images of SDS-PAGE gels stained with Coomassie are presented, showing the conjugation of each peptide to Qbeta VLPs. Identify of each lane is indicated in (E). N/A refers to unrelated conjugations that were included in these gels. Lanes are included (empty) for peptides that were unable to be synthesized to simplify the loading strategy. Yellow highlight indicates a peptide that did not conjugate or was not successfully synthesized.



**Supplemental Figure S2. Binding of Q $\beta$ -VLP-NS1 peptide vaccine-elicited antibodies to DENV-2 infected cells.** Mice (n=6) were immunized 2 times with 5 $\mu$ g of vaccine and blood was collected 3 weeks after the final immunization. Cells infected with DENV-2 were fixed and stained with sera from mice immunized with vaccines, Q $\beta$  alone (negative control), or a commercially available mAb to NS1 (green in merge). Cells were then imaged by confocal microscopy and co-localization of DENV envelope (red in merge), and mouse sera was determined.