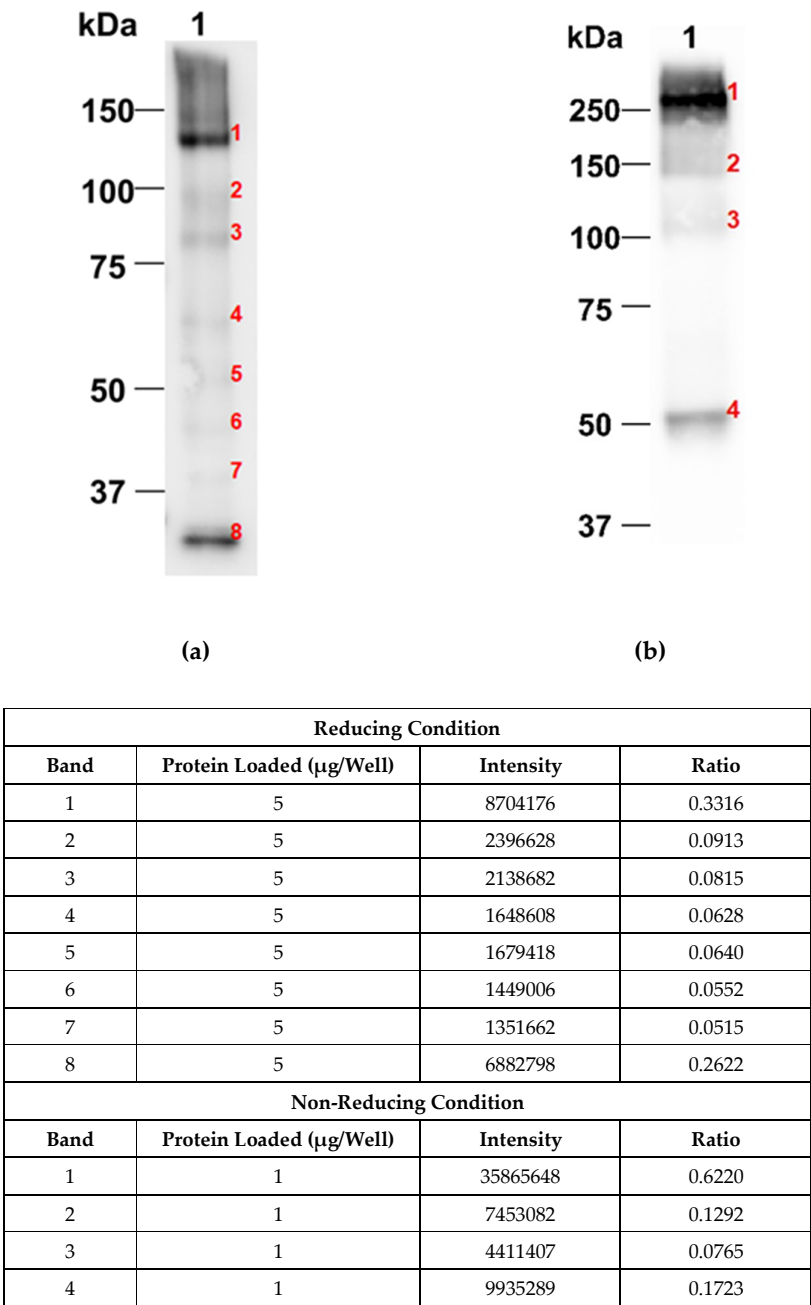


Plant-Produced S1 Subunit Protein of SARS-CoV-2 Elicits Immunogenic Responses in Mice



**Figure S1.** The western blot and densitometry readings/intensity ratio of plant-produced SARS-CoV-2 S1-Fc protein. The SARS-CoV-2 S1-Fc protein was purified by single-step protein A affinity chromatography and the purified plant-produced SARS-CoV-2 S1-Fc was analyzed by western blot analysis under reducing (a) and non-reducing conditions (b), respectively.

**Table S1.** SARS-CoV-2 RBD-specific T-cell responses in immunized mice. Mouse splenocytes were stimulated with RBD peptide pools and analyzed by mouse IFN- $\gamma$  ELISpot assay. Data presented as mean  $\pm$  SD (n = 5). SFCs: Spot-forming cells.

Group	Vaccination	Sample No.	IFN- $\gamma$ ELISpot (SFU/10 <sup>6</sup> Splenocyte)					
			Negative	Positive	SARS-CoV-2-Pool#3	SARS-CoV-2-Pool#4	SARS-CoV-2-Pool#5	Total
1	PBS + Alum	1	0	2496	0	0	0	0
		2	0	2446	0	0	0	0
		3	0	578	0	0	0	0
		4	0	2726	0	0	0	0
		5	0	2616	0	0	0	0
		Mean $\pm$ SD						0 $\pm$ 0
2	10 $\mu$ g SARS-CoV-2 S1-Fc + Alum	1	0	2244	0	0	172	172
		2	0	1952	22	0	0	22
		3	0	0	0	0	2	2
		4	0	2432	90	32	112	234
		5	0	2268	40	138	54	232
		Mean $\pm$ SD						132.4 $\pm$ 112.9