

Supplemental material

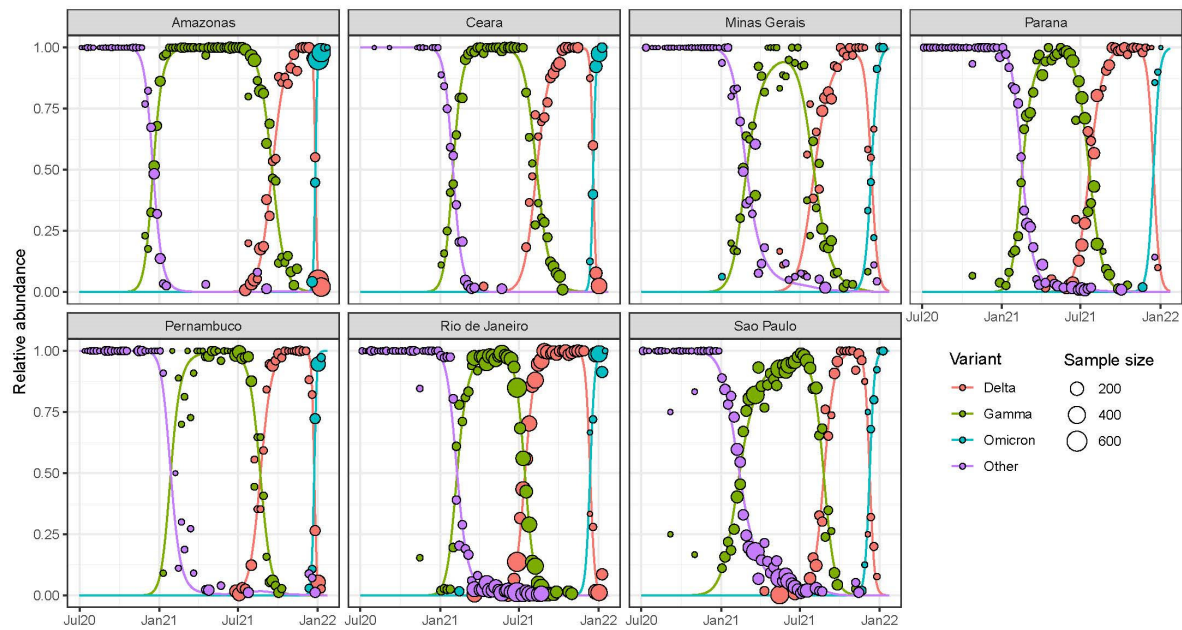


Figure S1. The metadata for all SARS-CoV-2 sequences deposited on GISAID between Jul 2020 and Jan 2022 (<https://www.gisaid.org/>) were downloaded. The lines show the predictions of a multinomial model fit using the nnet package in R. “Other” refers principal to wild type virus and P.2.

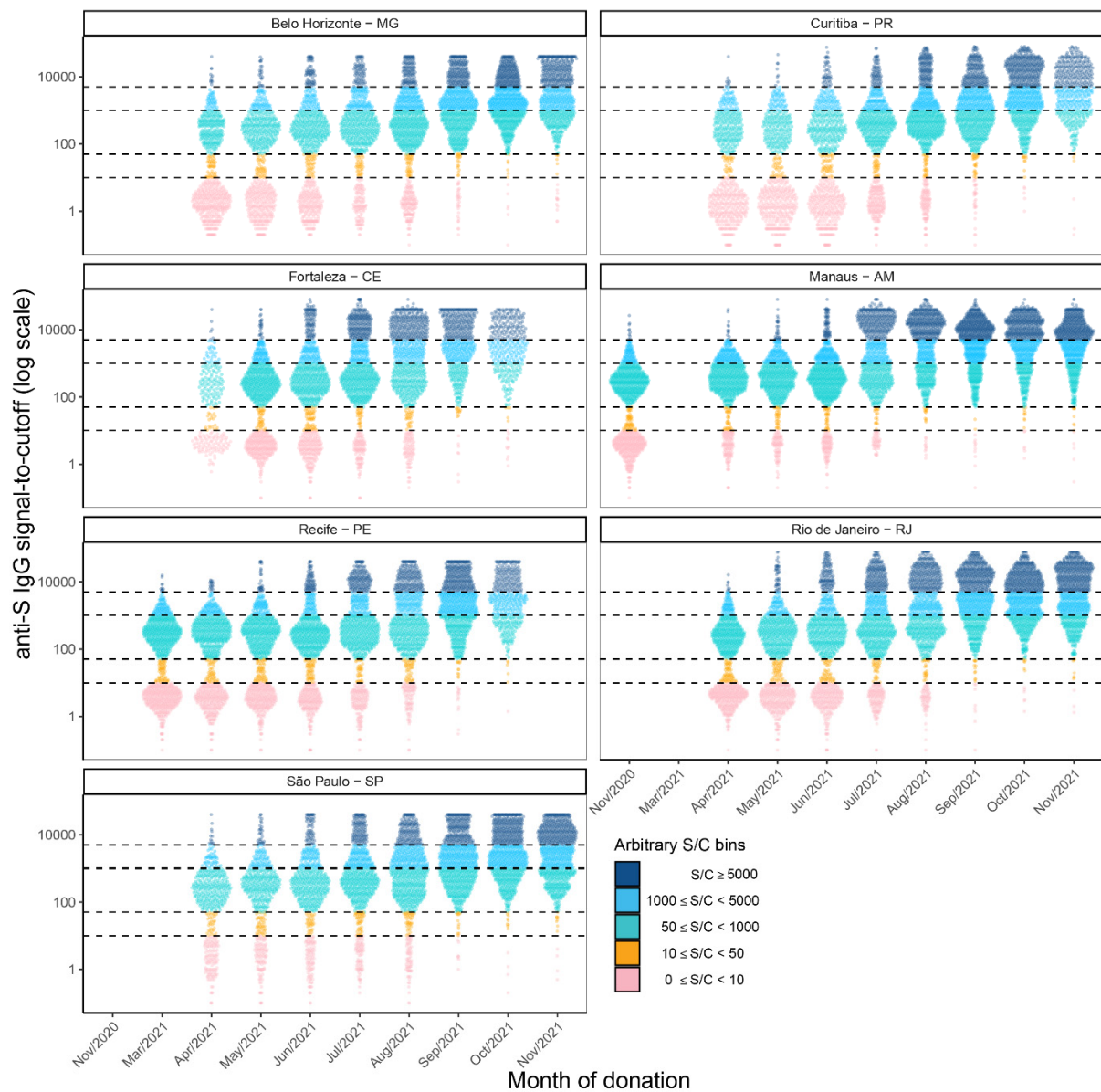


Figure S2. Raw signal to cut-off readings for each month blood donor sample across the seven Brazilian state capital cities. A threshold of 50 S/C is defined as a positive assay, other thresholds are arbitrary and shown to aid visualization.

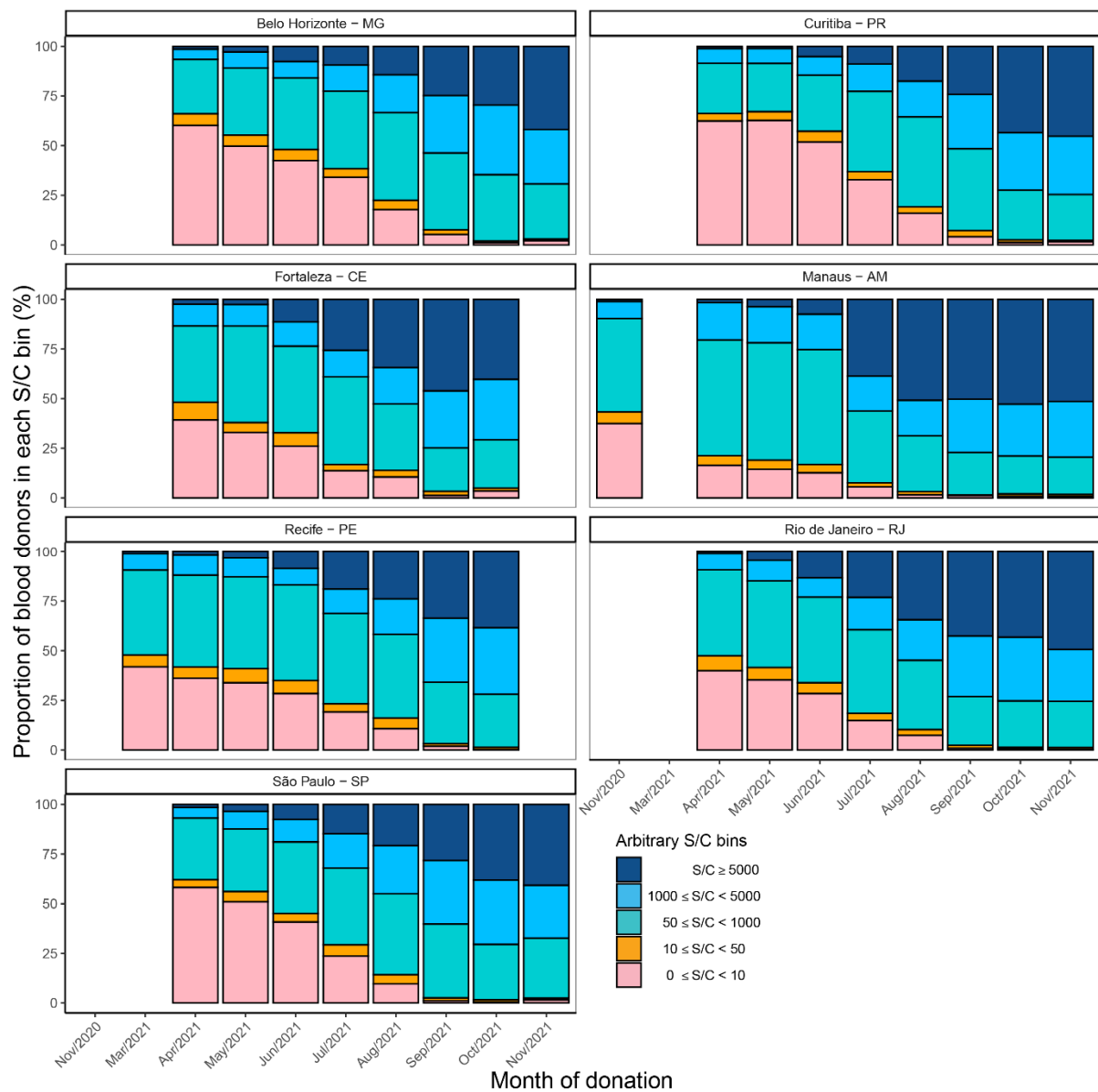


Figure S3. Proportion of blood donor samples falling in arbitrary S/C bins each month across seven Brazilian state capitals.

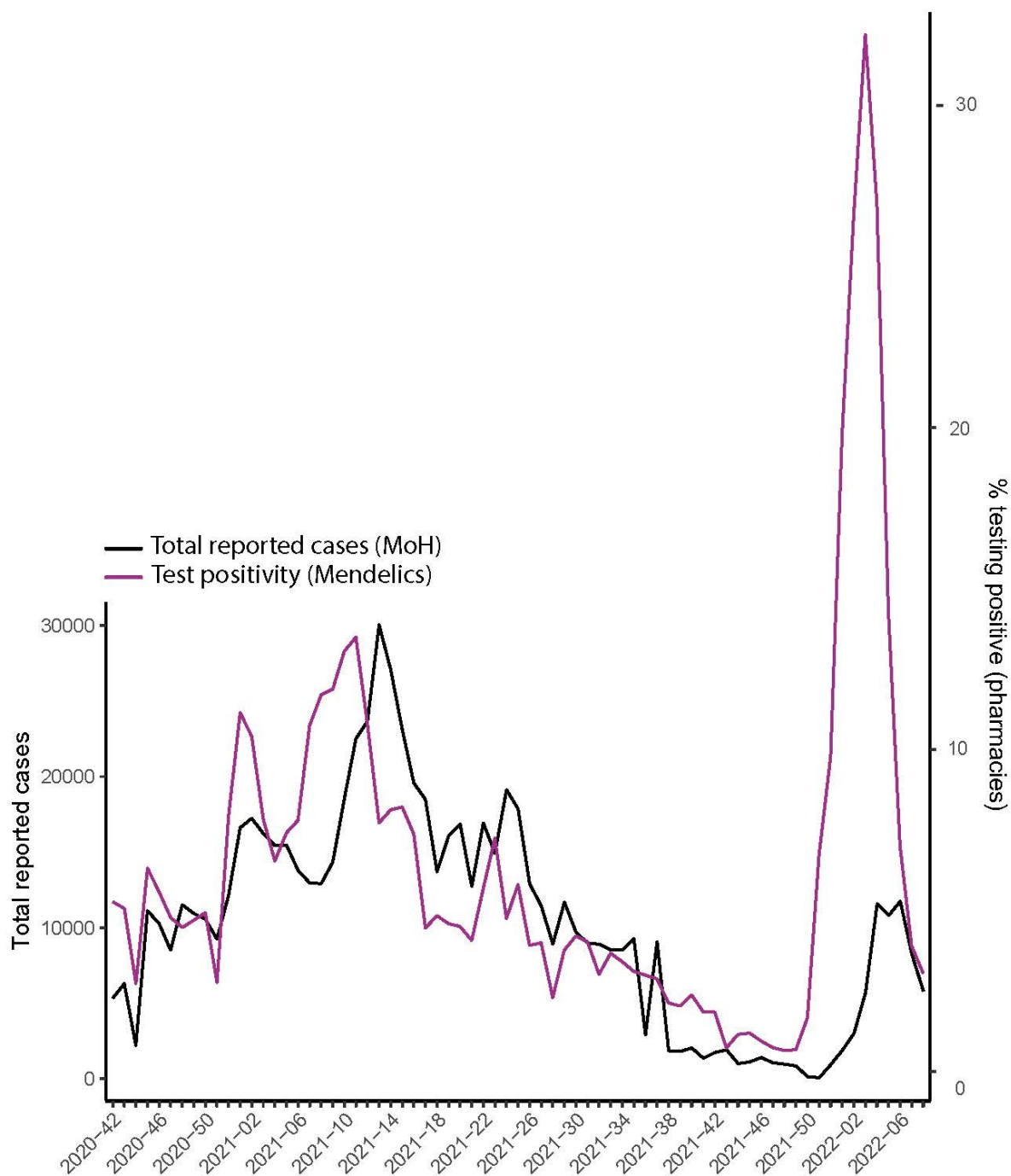


Figure S4. Black line (LHS y-axis) - total number of reported cases in Sao Paulo city (<https://www.covid.saude.br/>) shown per week of reporting. Purple line (RHS y-axis) shows the % positivity of tests administered in pharmacies in Sao Paulo by Mendelics (<https://mendelics.com.br/>).