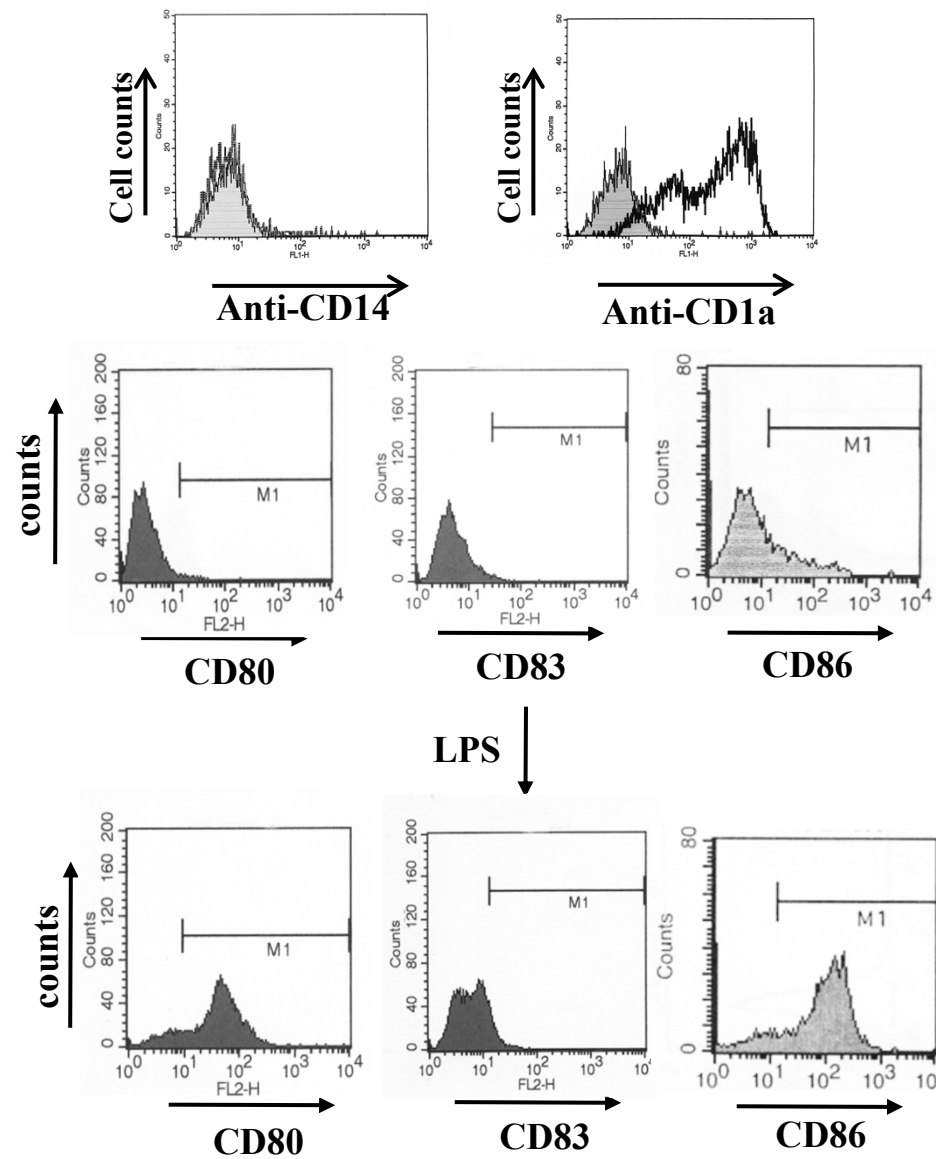
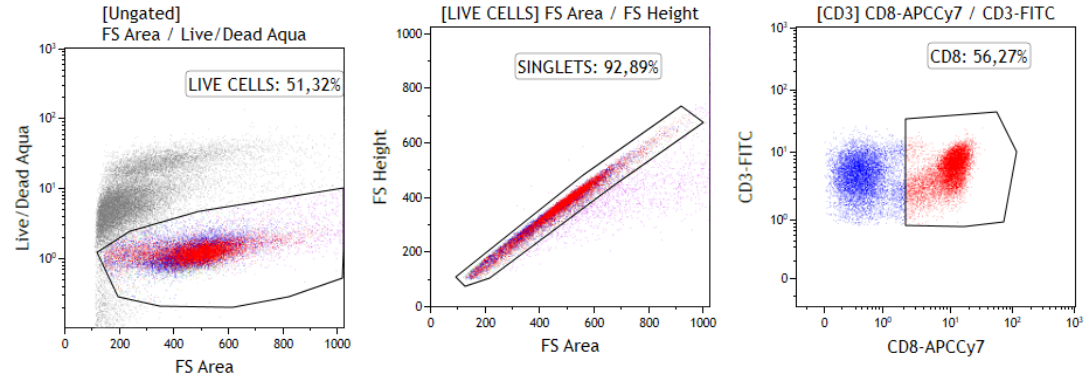


**Supplementary Figure S1.** Western blot analysis of transfected cells and EVs isolated from respective supernatants: raw data.

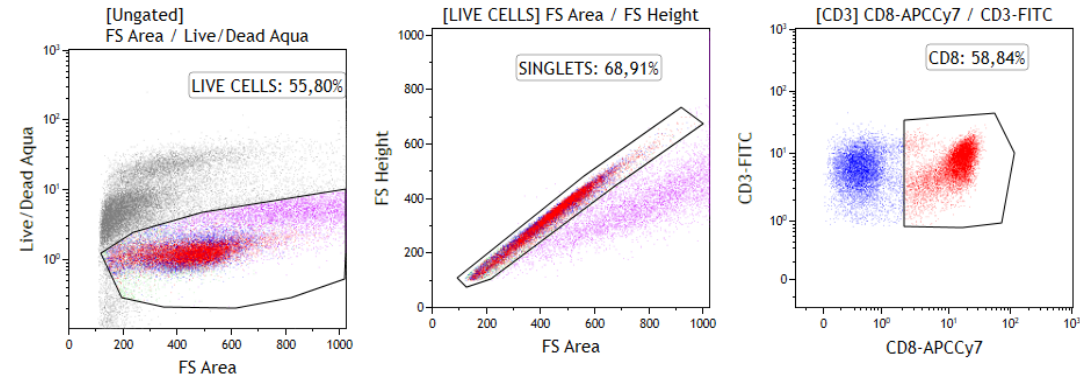


**Supplementary Figure S2.** Phenotype analysis of PBMC-derived monocytes after 5 days of cultivation in the presence of both GM-CSF and IL-4. Cells were tested for the expression of CD14 (i.e., marker of monocyte-macrophages), the DC-related CD1a, and, also after LPS-treatment, CD80, CD83, and CD86 markers. M1 signs the range of positivity. The data are representative of five independent experiments.

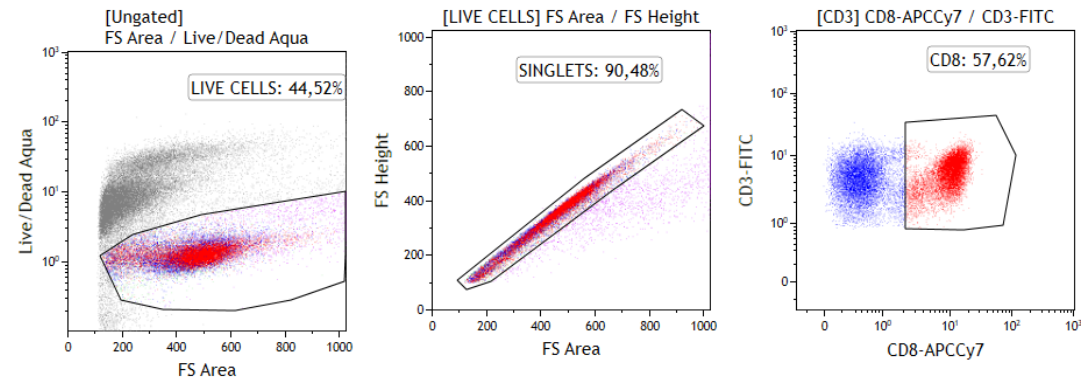
**PBLs ctrl EVs**



**PBLs Nef<sup>mut</sup>/N EVs**



**PBLs+ Nef<sup>mut</sup>PL/N EVs**



**Supplementary Figure S3.** Gating strategy applied on PBLs isolated from co-cultures with challenged DCs before analysis of either CD107a or CM-Dil positive cells.