

Figure S1. The effect of vaccines on various immune cells. (A) The representative flow cytometry figures of B cells (gated in live CD45+), T cells (gated in live CD45+CD90+), CD8+ T cells (gated in live CD45+CD90+CD4-) and CD4+ T cells (gated in live CD45+CD90+CD4) in spleens are shown. (B) Percentages of B cells, T cells, CD4+ T and CD8+ T cells in the spleen were analyzed using flow cytometry.

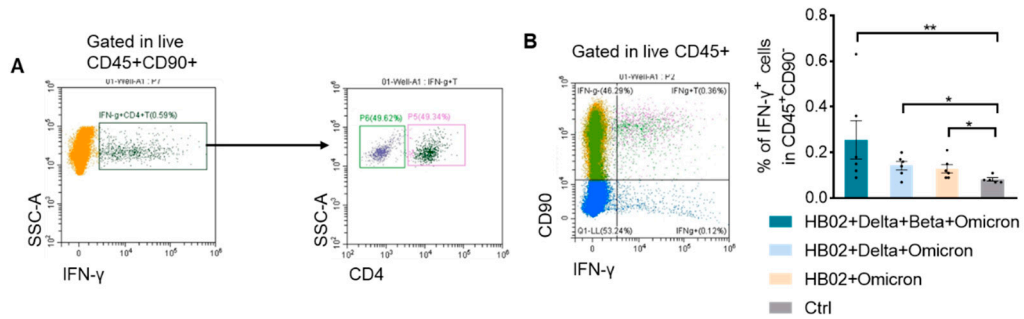


Figure S2. IFN- γ -expressing cell analysis by FACS. (A) The representative flow cytometry figures of IFN- γ + T cells (gated in live CD45+) in spleens are shown. (B) Percentages of CD90- IFN- γ + cells in the spleen were analyzed using flow cytometry. Error bars represent SEM. * $p < 0.05$; ** $p < 0.01$.