

## Supplementary Materials

**Suppl Table S1.** Multivariate Logistic regression of overall morbidity.

	Coef.	St.Err.	t-value	p-value	[95% Conf Interval]		Sig
Age	1	.	.	.	.	.	.
≥65	2.995	0.478	6.87	0	2.191	4.095	***
Sex	1	.	.	.	.	.	.
Female	0.712	0.117	-2.07	0.038	0.516	0.982	**
Wave	1	.	.	.	.	.	.
2nd wave	4.138	2.184	2.69	0.007	1.471	11.643	***
3rd wave	2.966	1.502	2.15	0.032	1.099	8.001	**
4th wave	5.285	2.724	3.23	0.001	1.925	14.512	***
Days from symptom onset to ICU admission	1.053	0.013	4.10	0	1.027	1.079	***
APACHE II	1.09	0.016	5.97	0	1.059	1.121	***
SOFA	1.248	0.038	7.31	0	1.176	1.325	***
BMI	1	.	.	.	.	.	.
25-29	1.455	0.281	1.94	0.053	0.996	2.125	*
30-34	2.003	0.434	3.20	0.001	1.309	3.063	***
35-39	.804	0.245	-0.72	0.473	0.443	1.46	.
≥40	2.144	0.693	2.36	0.018	1.137	4.041	**
Total comorbidities	1	.	.	.	.	.	.
≥2	1.342	0.206	1.92	0.055	0.993	1.814	*
Smoking status	1	.	.	.	.	.	.
Current	1.207	0.289	0.79	0.431	0.756	1.93	.
Ex-smoker	1.043	0.186	0.23	0.814	0.735	1.479	.
Steroids administration	1	.	.	.	.	.	.
Dexamethasone	0.675	0.134	-1.98	0.048	0.458	0.997	**
Vaccination status	1	.	.	.	.	.	.
Yes	1.184	0.386	0.52	0.604	0.625	2.243	.

\*\*\*  $p < 0.01$ , \*\*  $p < 0.05$ , \*  $p < 0.1$

BMI: Body mass index; ICU: Intensive Care Unit; APACHEII: Acute Physiology And Chronic Health Evaluation II; SOFA: Sequential Organ Failure Assessment.

**Suppl. Table S2.** Multivariate Logistic regression of 28-days morbidity.

	Coef.	St.Err.	t-value	p value	[95% Conf Interval]		Sig
Age	1	.	.	.	.	.	.
≥65	2.459	0.413	5.36	0	1.77	3.417	***
Sex	1	.	.	.	.	.	.
Female	0.896	0.146	-0.67	0.5	0.651	1.233	.
Wave	1	.	.	.	.	.	.
2nd wave	2.022	1.076	1.32	0.186	0.712	5.74	.
3rd wave	1.3	0.664	0.51	0.608	0.478	3.539	.
4th wave	2.232	1.146	1.56	0.118	0.816	6.108	.
Days from symptom onset to	1.054	0.012	4.51	0	1.03	1.078	***

ICU admission							
APACHE II	1.037	0.013	2.90	0.004	1.012	1.063	***
SOFA	1.276	0.04	7.81	0	1.2	1.356	***
BMI	1	.	.	.	.	.	
25-29	0.821	0.16	-1.01	0.314	0.56	1.204	
30-34	1.286	0.273	1.19	0.236	0.848	1.949	
35-39	0.535	0.172	-1.95	0.052	0.285	1.004	*
≥40	1.201	0.389	0.56	0.572	0.636	2.265	
Total	1	.	.	.	.	.	
comorbidities							
≥2	1.128	0.176	0.77	0.442	0.83	1.532	
Smoking status	1	.	.	.	.	.	
Current	1.358	0.321	1.29	0.196	0.855	2.157	
Ex-smoker	1.015	0.181	0.08	0.935	0.715	1.441	
Steroids	1	.	.	.	.	.	
administration							
Dexamethasone	0.993	0.195	-0.04	0.971	0.676	1.459	
Vaccination status	1	.	.	.	.	.	
Yes	1.415	0.415	1.18	0.237	0.796	2.514	

\*\*\*  $p < 0.01$ , \*\*  $p < 0.05$ , \*  $p < 0.1$

BMI: Body mass index; ICU: Intensive Care Unit; APACHEII: Acute Physiology And Chronic Health Evaluation II; SOFA: Sequential Organ Failure Assessment.

**Suppl. Table S3.** Multivariate Logistic regression of overall ICU morbidity.

	Coef.	St.Err.	t-value	p-value	[95% Conf Interval]		Sig
Age	1	.	.	.	.	.	
≥65	2.925	0.464	6.76	0	2.143	3.992	***
Sex	1	.	.	.	.	.	
Female	0.702	0.114	-2.18	0.029	0.51	0.964	**
Wave	1	.	.	.	.	.	
2nd wave	4.413	2.335	2.81	0.005	1.564	12.449	***
3rd wave	3.114	1.585	2.23	0.026	1.148	8.447	**
4th wave	5.866	3.036	3.42	0.001	2.127	16.178	***
Days from symptom onset to ICU admission	1.057	0.013	4.48	0	1.032	1.083	***
APACHE II	1.074	0.015	5.24	0	1.046	1.104	***
SOFA	1.246	0.037	7.34	0	1.175	1.321	***
BMI	1	.	.	.	.	.	
25-29	1.148	0.218	0.73	0.468	0.791	1.667	
30-34	1.719	0.365	2.55	0.011	1.134	2.606	**
35-39	.676	0.203	-1.30	0.193	0.375	1.219	
≥40	1.619	0.518	1.51	0.132	0.865	3.03	
Total	1	.	.	.	.	.	
comorbidities							
≥2	1.215	0.185	1.28	.2	0.902	1.638	
Smoking status	1	.	.	.	.	.	
Current	1.315	0.311	1.16	0.246	0.827	2.09	
Ex-smoker	0.922	0.163	-0.46	0.646	0.653	1.303	
Steroids	1	.	.	.	.	.	
administration							
Dexamethasone	0.681	0.132	-1.98	0.048	0.465	0.997	**
Vaccination status	1	.	.	.	.	.	

Yes	1.284	0.413	0.78	0.437	0.684	2.411
-----	-------	-------	------	-------	-------	-------

\*\*\*  $p < 0.01$ , \*\*  $p < 0.05$ , \*  $p < 0.1$

BMI: Body mass index; ICU: Intensive Care Unit; APACHEII: Acute Physiology And Chronic Health Evaluation II; SOFA: Sequential Organ Failure Assessment.

**Suppl. Table S4.** Chi-square test for vaccination status and total number of comorbidities

Vaccination status	Total comorbidities		
	<2	≥2	Total
No	647	665	1312
Yes	40	77	117
Total	687	742	1429
Pearson $\chi^2 = 9.85$ , p value = 0.0017			

**Suppl. Table S5.** Two-sample Wilcoxon rank-sum test for APACHE II score between vaccinated and non-vaccinated patients.

vax	obs	rank sum	expected
No	1143	689228.5	702373.5
Yes	85	65377.5	52232.5
combined	1228	754606	754606

```
unadjusted variance 9950291.25
adjustment for ties  -22594.87
-----
adjusted variance   9927696.38
```

```
Ho: apache(vax==No) = apache(vax==Yes)
      z =  -4.172
      Prob > |z| =  0.0000
```

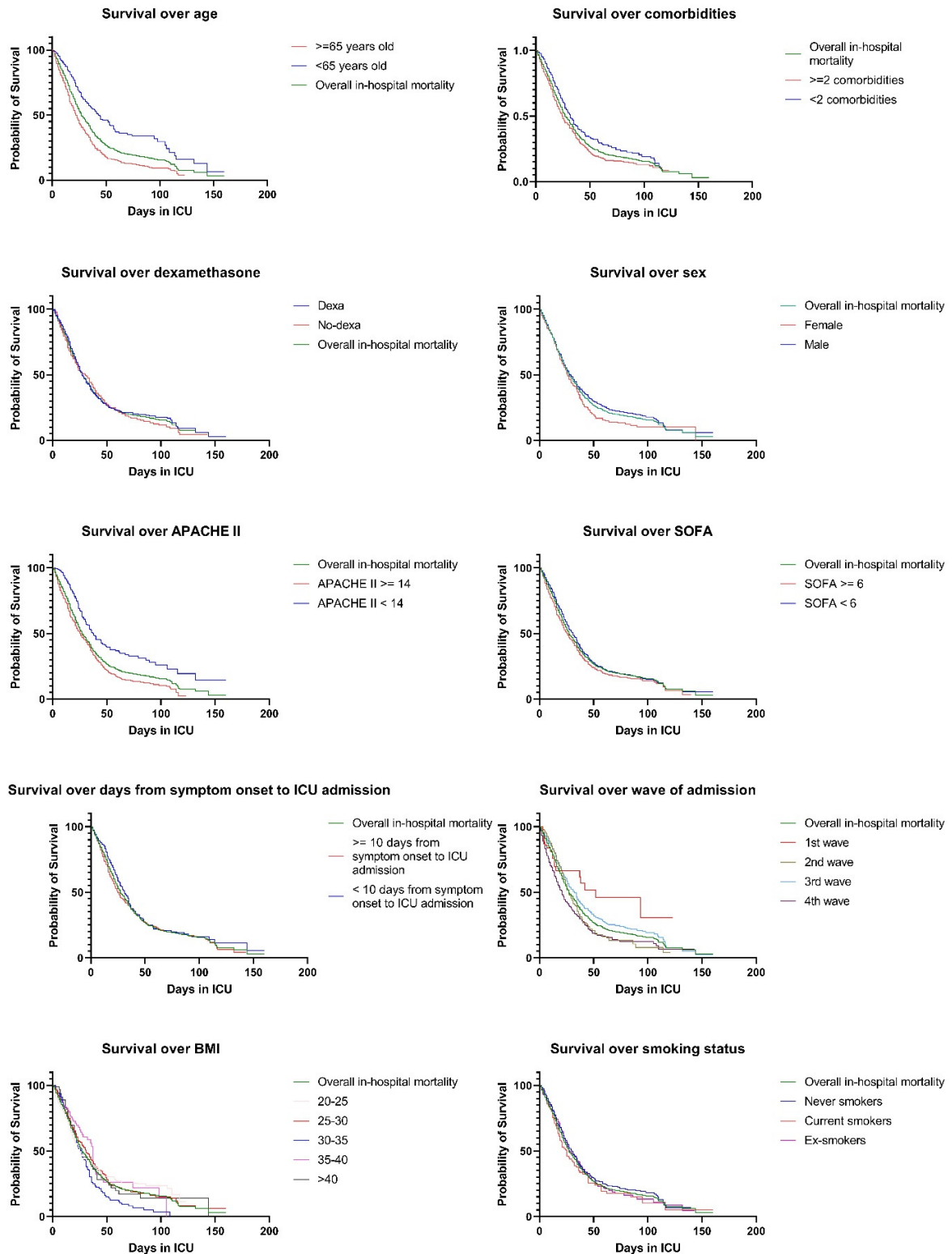
**Suppl. Table S6.** Two-sample Wilcoxon rank-sum test for SOFA score between vaccinated and non-vaccinated patients.

vax	obs	rank sum	expected
No	1123	668053.5	678853.5
Yes	85	62182.5	51382.5
combined	1208	730236	730236

```
unadjusted variance 9617091.25
adjustment for ties  -183846.83
-----
adjusted variance   9433244.42
```

```
Ho: sofa(vax==No) = sofa(vax==Yes)
      z =  -3.516
      Prob > |z| =  0.0004
```

**Suppl. Figure S1.** Kaplan-Meier curves for overall mortality over different variables



**Suppl Figure S2. Kaplan-Meier curves for 28 days mortality over different variables**

