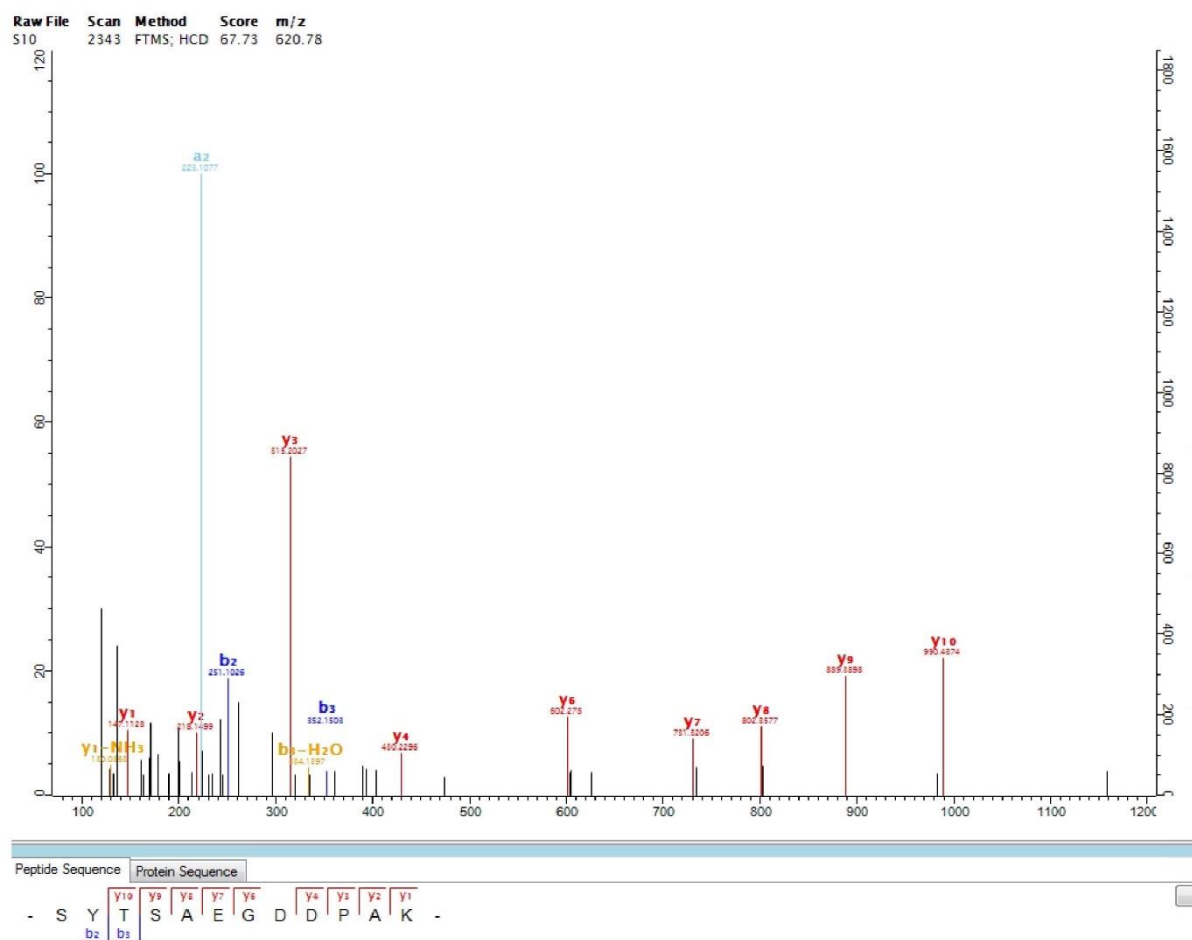


Supplementary Materials



**Figure S1.** Western immunoblotting of fusion protein pIII::MAGE-A1 separated by reducing SDS-PAGE. Lane 1: molecular weight markers in kDa, lines 2-5: fusion protein pIII::MAGE-A1 of genetically engineered bacteriophages, lines 6-8: wild-type pIII of VCSM13 helper bacteriophage.



**Figure S2.** MS/MS spectra of the identified peptide SYTSAEGDDPAK by nano LC-MS/MS.