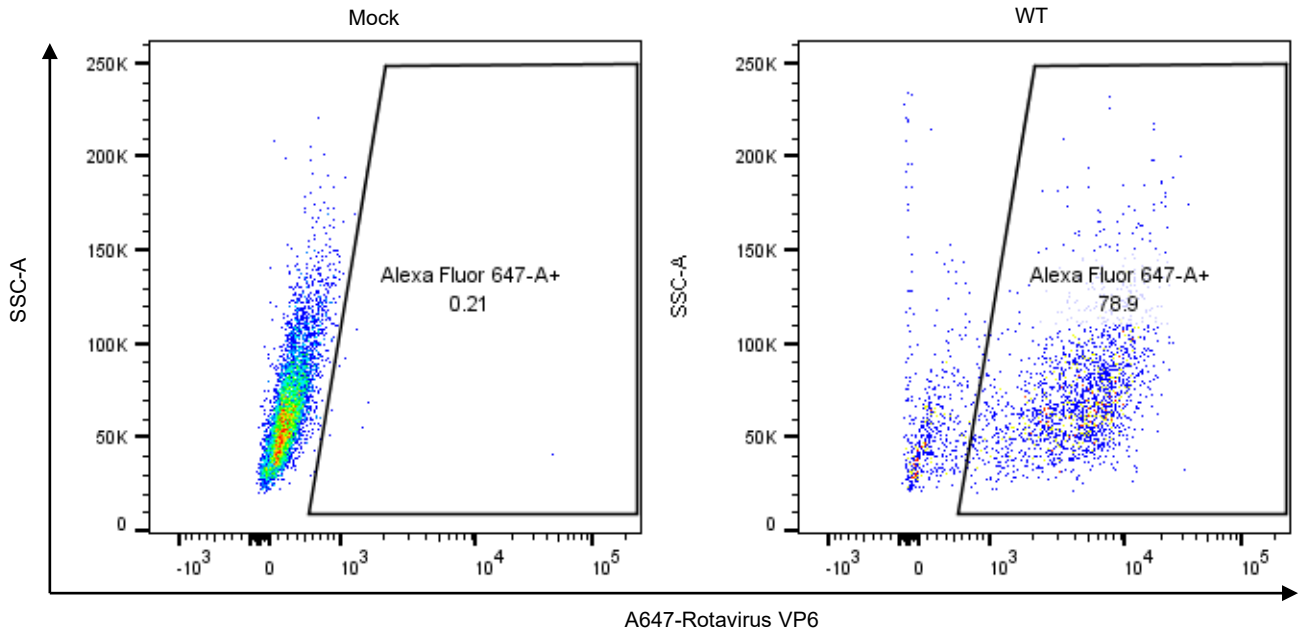
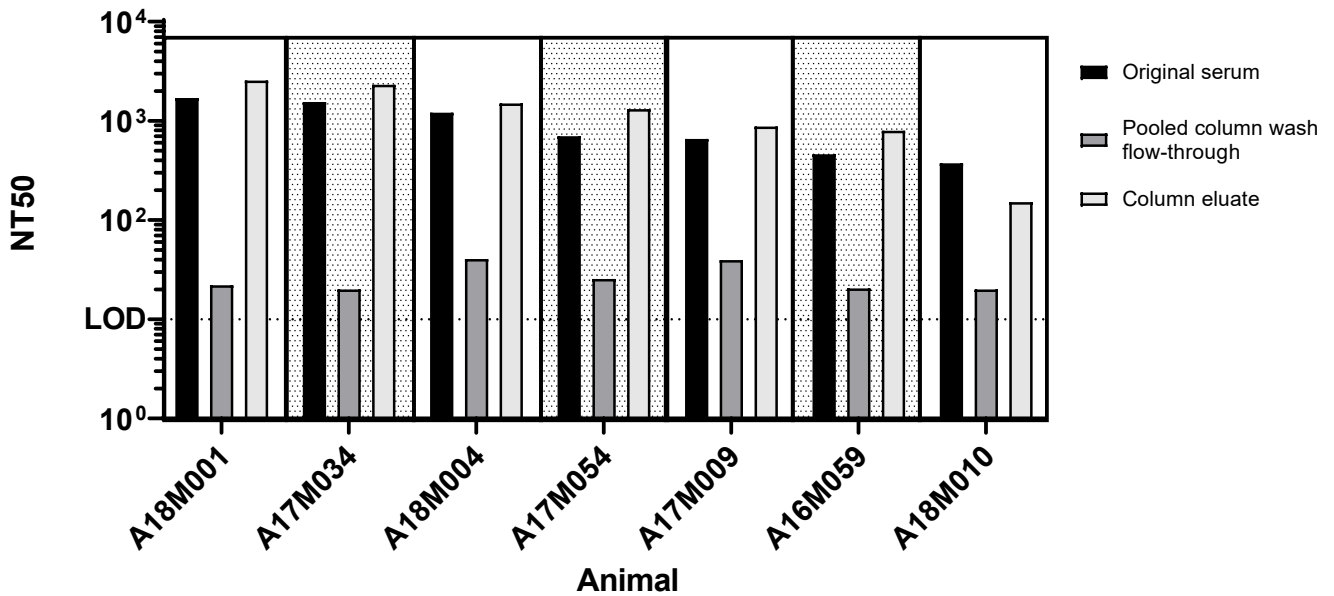


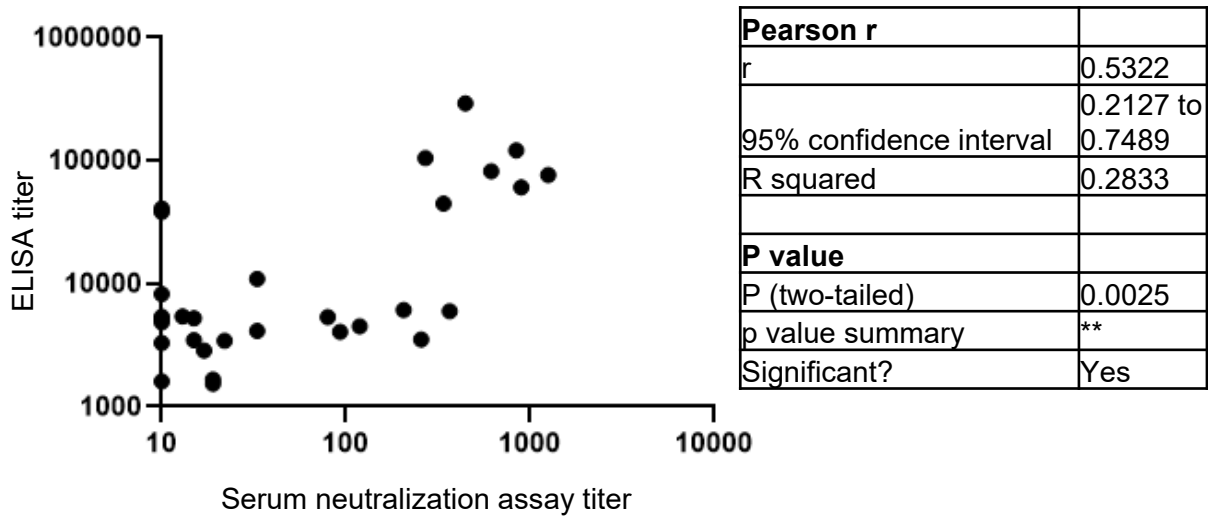
Sup Figure S1



Supplementary Figure S1. Flow cytometry-based infectivity assay. Mock infected cells (left) and rSA11 infected cells (right) were stained with rotavirus VP6 antibody. MOI was calculated using the percentage of VP6 positive cell population base on Poisson distribution. IU/ml was calculated by $\text{IU/ml} = (\# \text{ of cells at infection}) \times [\text{MOI} / (\text{ml of viral stock used at infection})]$



Supplementary Figure S2. Neutralization titers of African green monkey serum samples before and after antibody purification. Seven African green monkey serum samples were purified with protein G. Original samples, wash flow-through and column elutes were examined by the GFP based neutralization assay.



Supplementary Figure S3. The correlation of neutralization titers and ELISA titers of 30 human serum samples and its statistical analysis.