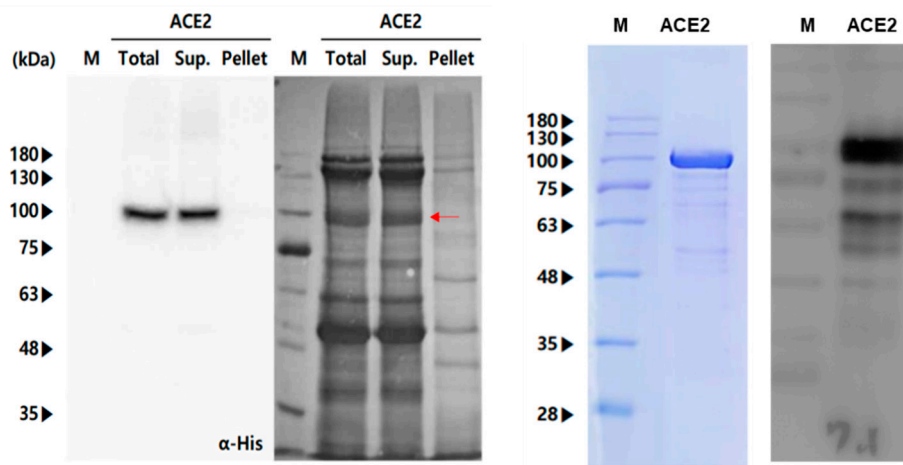
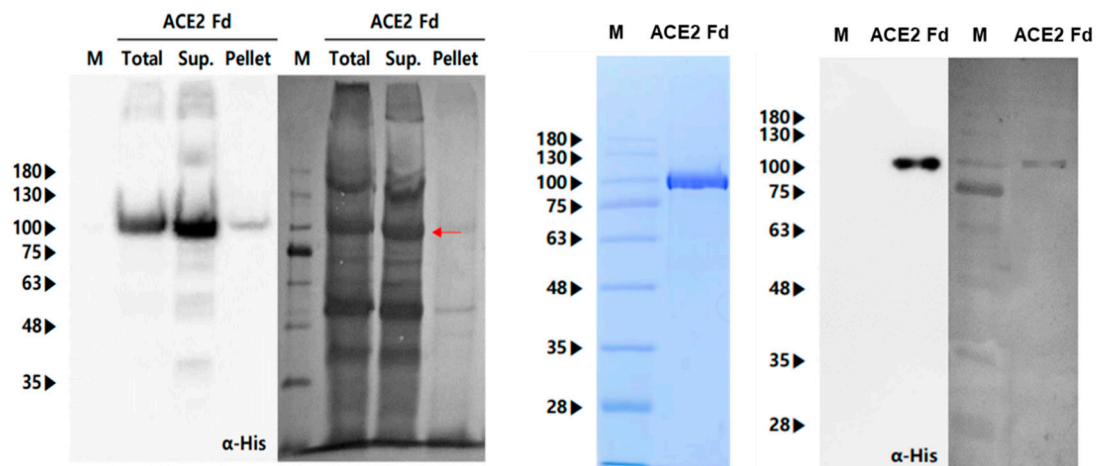


A**B**

Supplementary Figure S1. SDS-PAGE and western blot analysis of purified hrACE2 (A) and hrACE2-Fd (B) recombinant proteins. hrACE2 and hrACE2-Fd expression in the total protein extract and in soluble and insoluble fractions was assessed using western blotting with the anti-His antibody (α -His). Confirmation of the purified hrACE2 and hrACE2-Fd was done by SDS-PAGE stained with Coomassie blue and western blotting with the anti-His and rabbit anti-ACE2 polyclonal antibodies (Sino Biological, #80031-RP02).