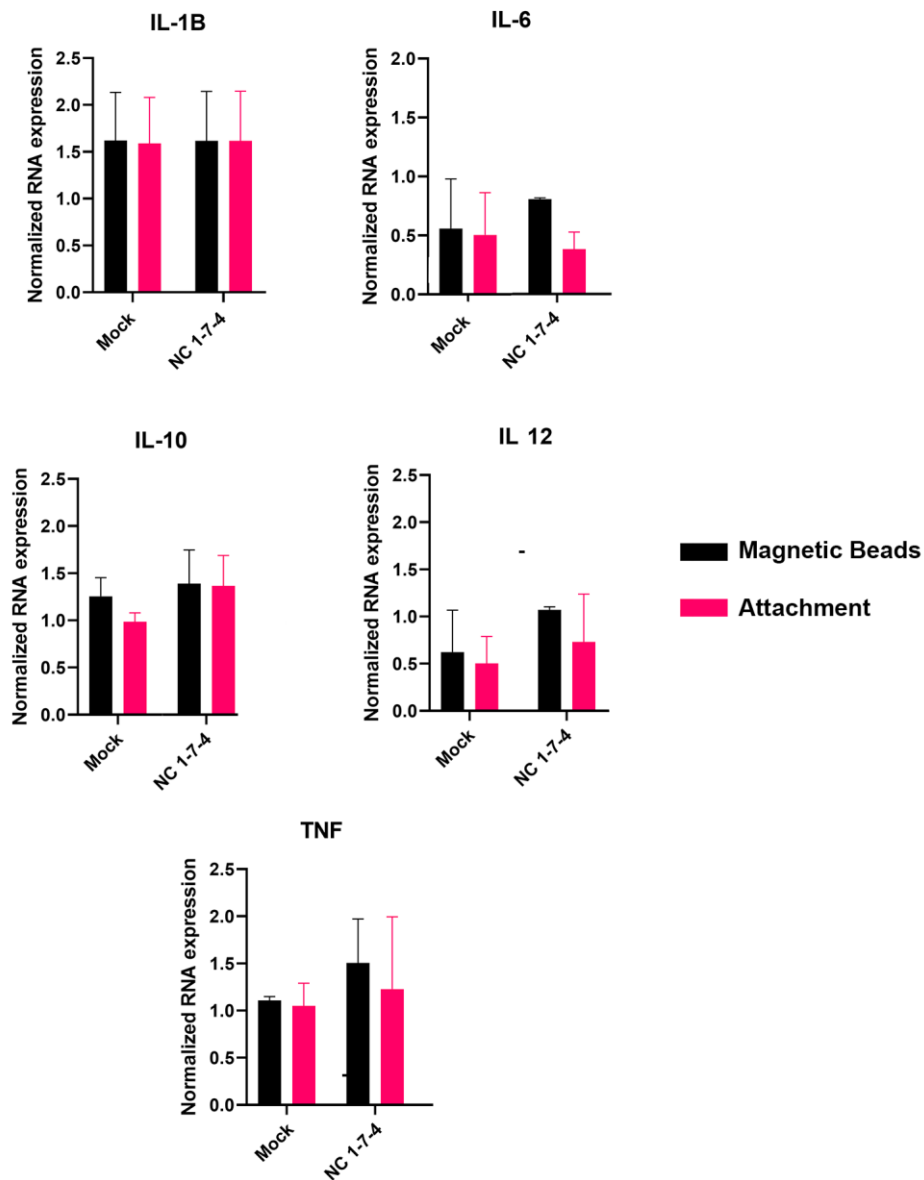
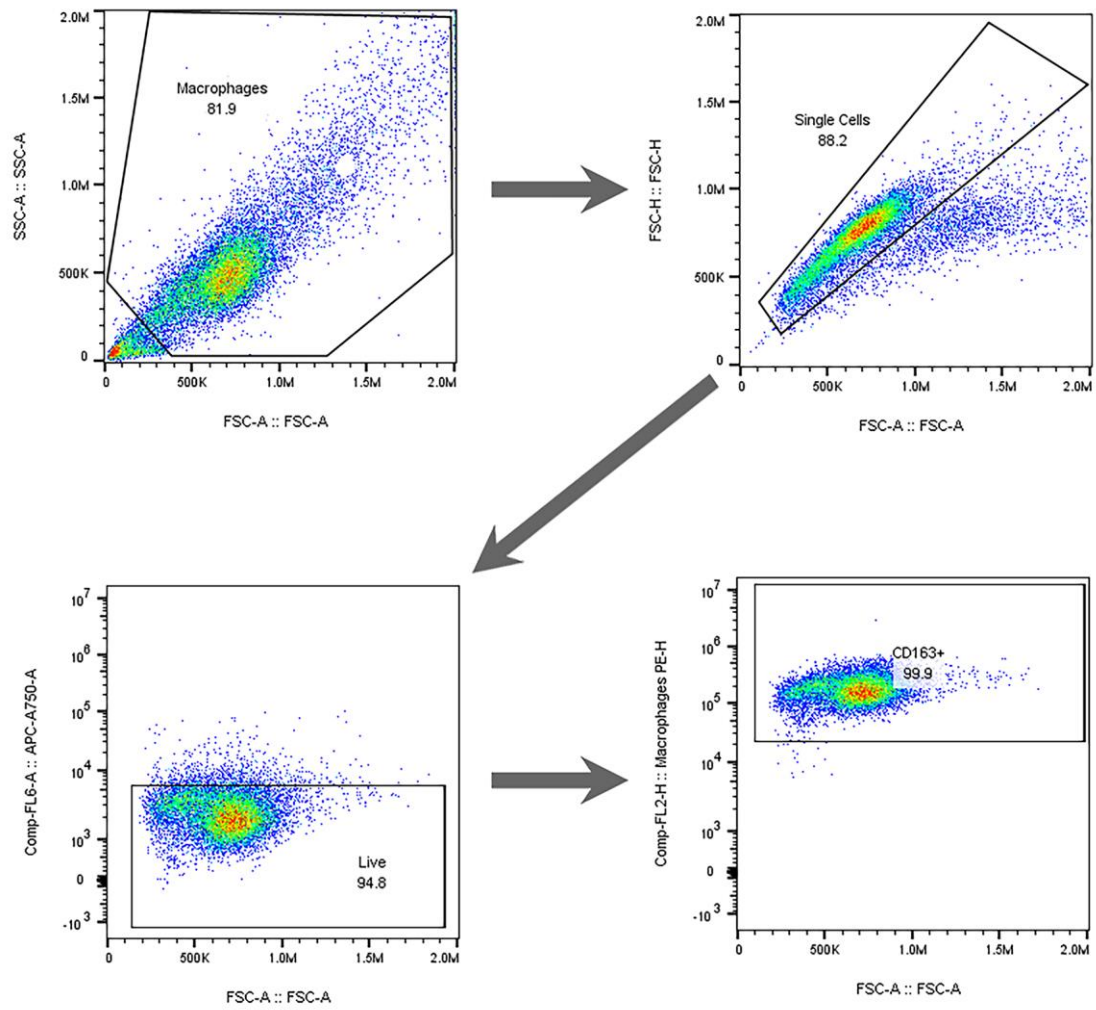


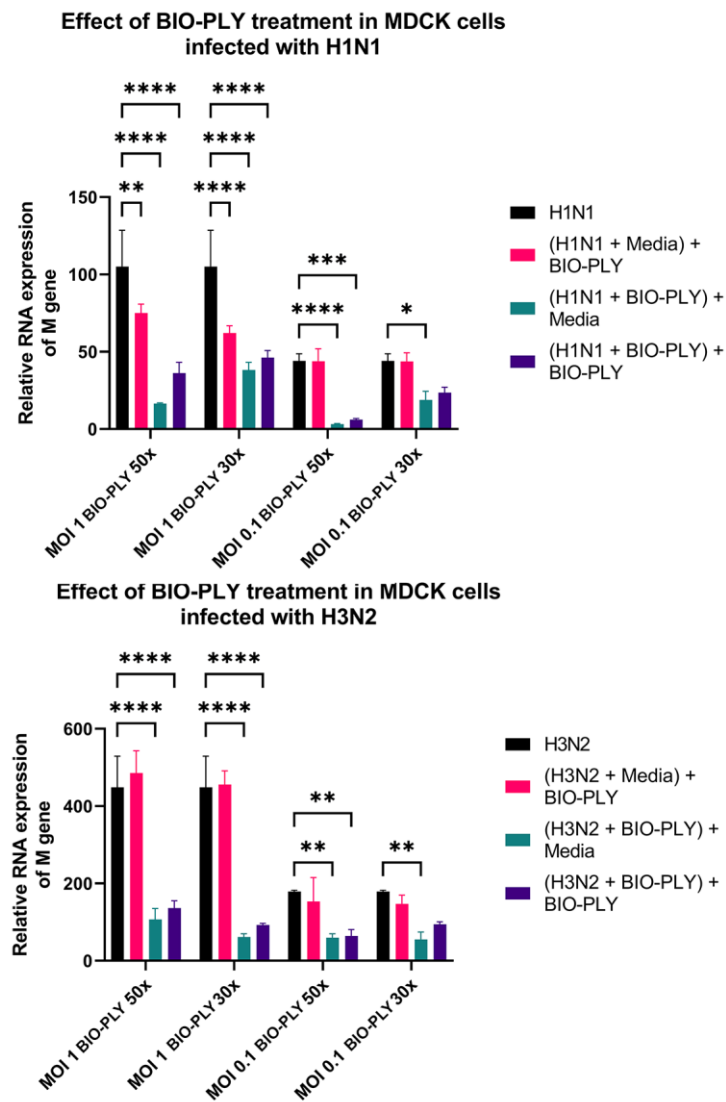
## Supplementary Figures



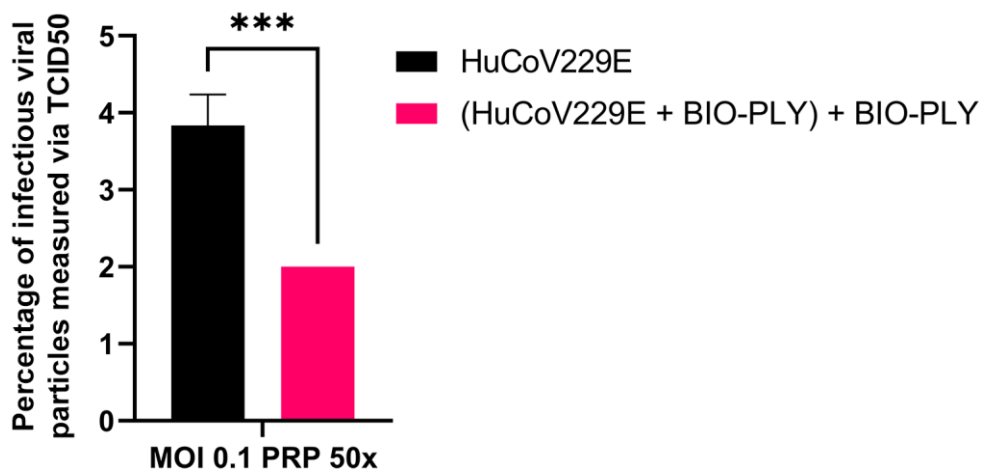
**Figure S1:** Comparison of the cytokine responses of macrophages isolated using magnetic beads or attachment to plastic cultures plates



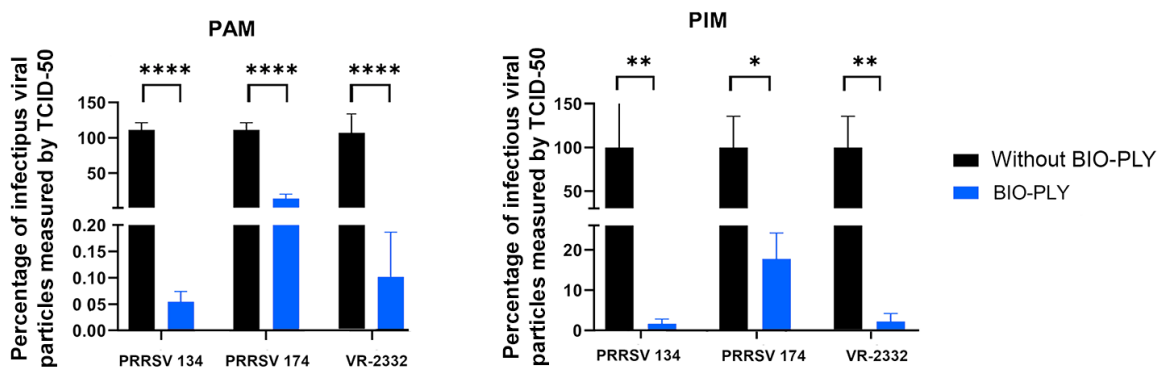
**Figure S2:** Gating strategy for the macrophage viability assay



**Figure S3:** Effect of BIO-PLY™ on the reduction of viral copies in MDCK cells infected with human influenza



**Figure S4:** Effect of BIO-PLY™ on the reduction of human coronavirus HuCoV229E titer in Huh-7 cells



**Figure S5:** Effect of equine BIO-PLY™ treatment on the production of infectious viral particles in porcine alveolar macrophages (PAM) and pulmonary intravascular macrophages (PIM) measured as TCID50.