

Supplementary materials

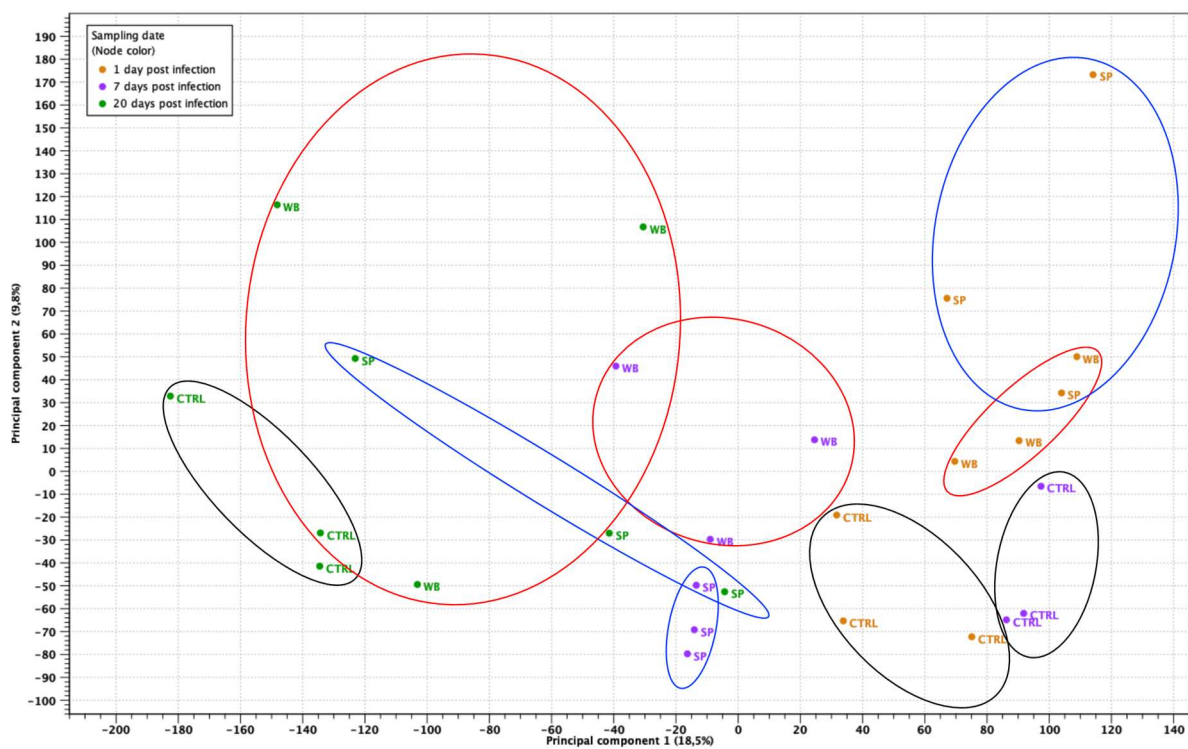
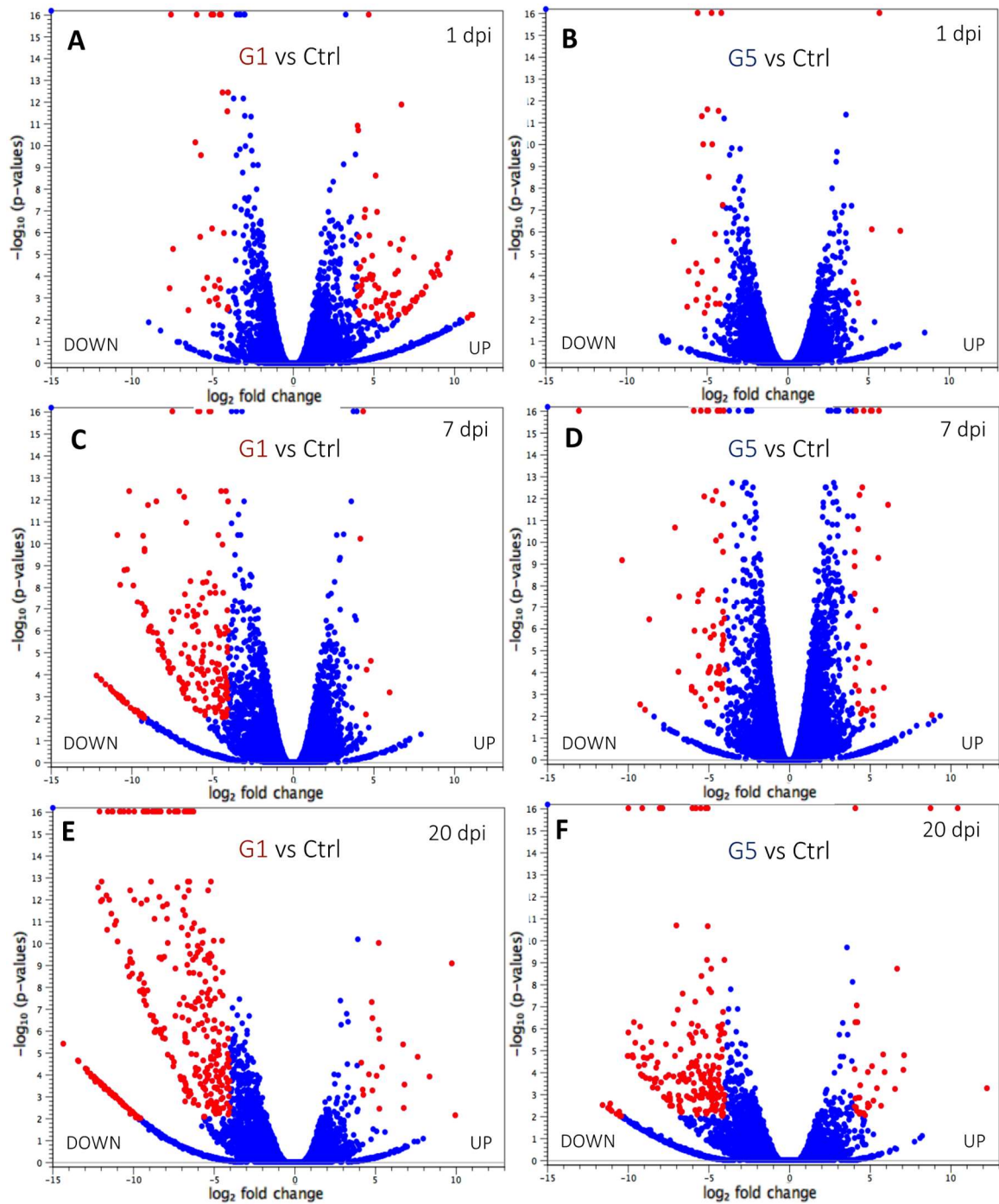


Figure S1. Principal component analysis of RNA-seq samples



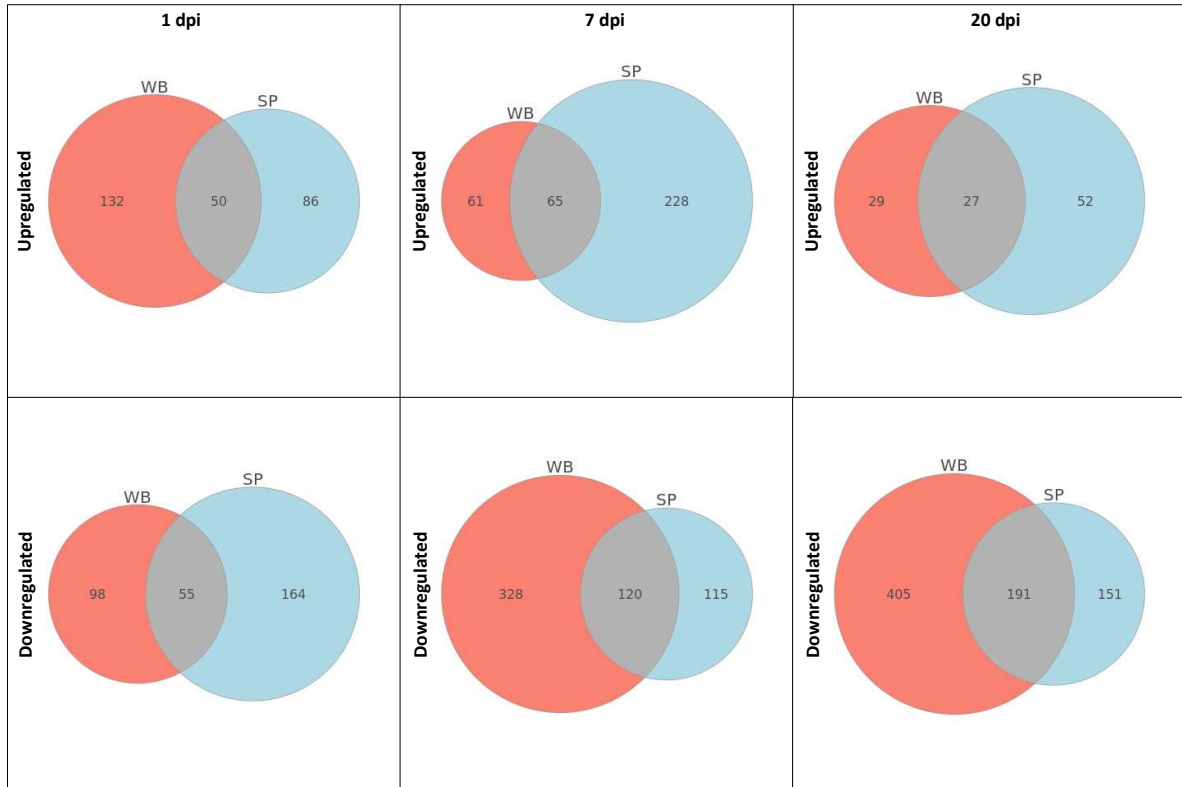


Figure S3. Venn diagrams of differentially expressed genes with respect to the control in fish challenged with RTTX (WB) and ALKA (SP) at days 1, 7 and 20 post-challenge.

Table S1. Immune response related genes differentially expressed (up and down regulated) in fish challenged with IPNV isolates RTTX and ALKA. The human homologues for each group are shown, as well as those that were common between both groups (BOTH)

Group	Regulation	1 dpc	7 dpc	20 dpc
ALKA	Up	CD79B	TRIM39 TRIM21 CRP	TRIM39 GBP4 IGLL5 MID2
		C4B_2	IGLL5 ZC3H12A SLC26A6	MAP3K14 ST3GAL1 PTGDS
		PLA2G3	AHR EDN1 ARG2 CD209	CLEC4M NPPA CFHR1
		APOA4 MR1 CD200	AXL UMOD MX2 MRC1	PGC
		PTGDS CFP TLR5	RGCC NFKBID FTH1	GP2
		MPO CST3 ITGB7	CRISP3 HEBP2 COL17A1	
		AHSG S100A11	FOLR3 MUC5B TNFAIP6	
		LEAP2 PROS1	AMPD3 TCN1 EEF2 GAA	
	Down		PSAP MUC5AC	
		CRP ZP3 ST3GAL1	TRIM35 IGLL1	TRIM39 MEFV TRIM35 LGP2
		ARG2 USP14 FGL2	TRIM27 APOL1	APOA4 FRK STAT1 GBP1 CRP
		PI4K2A HEBP2 CUL1	CYP27B1 TRIM25	HLA-E RSAD2 IFI44L IFITM3
		PSMD11 SNAP25	CD200 PTGDS HERC5	HLA- CCL19 TRIM25
		AMPD3 TSHB CRH	DQB1 GCG ADGRE5	ZC3H12A IFIT1 B2M
		S100B GYG1		FCER2 ZC3HAV1
		PSMD12 MBP		PCK1 HERC5 IFIT5
	Down			MX1 PNP NLRC3
				EGR1 AMPD3
				MUC3A FOS SOCS3
				MUC5AC
BOTH	Up	HHLA2 TKFC MX1	TRIM35 HSP90AA1	TRIM25 HSP90AA1 FGA HEL-
		NLRC3 HEL111	SPHK2 PCK1 PNP CST3	S-72p
	Down			MUC3A
		HSP90AA1 ARG2	STAT1 HEL-S-62p	RSAD2 BTN1A1 HEL-S-62p
		CD209 CLEC4M	IFI44L MFAP4	PLA2G3 TRIM21 MFAP4
		PCK1 MRC1 HEL-S-	APOA4 USP18	CLEC4M CCL19 CEACAM1 ZP4
		72p AMPD3 PSMD13	HERC5 IFIT5 MX1	NPPA ZC3H12A ZP3 CD209
			TLR5 DNAJC3 XAF1	VCAM1 CLEC4M IRF5 HERC5
			S100A11 LEAP2	MUC3A UMOD MRC1 IFI27
			LRG1 CFHR1	MPO TIMP2
	Down			PS1TP5BP1 TCN1
				EEF1A1 FOS
RTTX	Up	CTSV ZP4	TRIM25 REG1B LGALS3	VCP APOA4 PRF1 GP2
		ZP3 LGALS3	HK1	COL17A1 NCAM1
		UMOD	NPPA	
		AKAP1 GP2	TIMP2	
		EEF1A1	PSAP	

	HEL-S-62p	IFITM3	MEFV	TRIM35	CCL20	HEL-S-	RIPK2	CD274	CTSL
	MFAP4	CEACAM1	62p	CTSV	IFI44L	MFAP4	CTSV	MFAP4	TRIM39
	ACOD1	CYP27B1	CXCL11	CCL19	TRIM39	AHR	ZP4	ZP3	CST7
	NOS2	ARG2	C7	ACOD1	ZP4	TRIM25	ZP3	CD209	CLEC10A
	CLEC4E	UMOD	CST7	IRF5	CLEC10A	CLDN1	HPRT1	UMOD	TLR5
	TLR5	GP2	PIK3CG	UMOD	IFI27	BMP6	ALDH3B1	MAP3K5	AKAP1
	LRP1	HEL-S-72p	ADM2	HEL57	TIMP2	PS1TP5BP1	NLRC3	FTH1	DLL1
Down	GPR84	LRG1	SOCS3	MMP9	CAND1	GPR45	ALDH3B1	HEL57	
				EEF1A1	HP		TIMP2	PS1TP5BP1	
							LYZ	RAPGEF4	
							SYNGR1	MMP9	GLA
							NPDC1	PADI2	CTSD
							XAF1	GYG1	APEH
							TSHR	PSMC3	
							ADGRG3		
