

Supplementary material

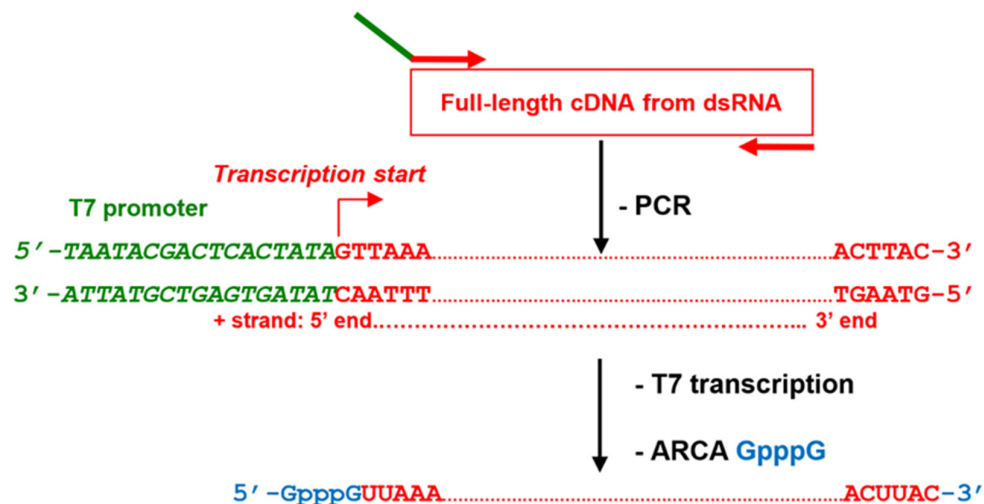


Figure S1. A schematic representation for generation of transcripts from linear PCR products representing the full-length cDNA copies of BTV genome segments (ARCA: anti-reverse cap analogue).

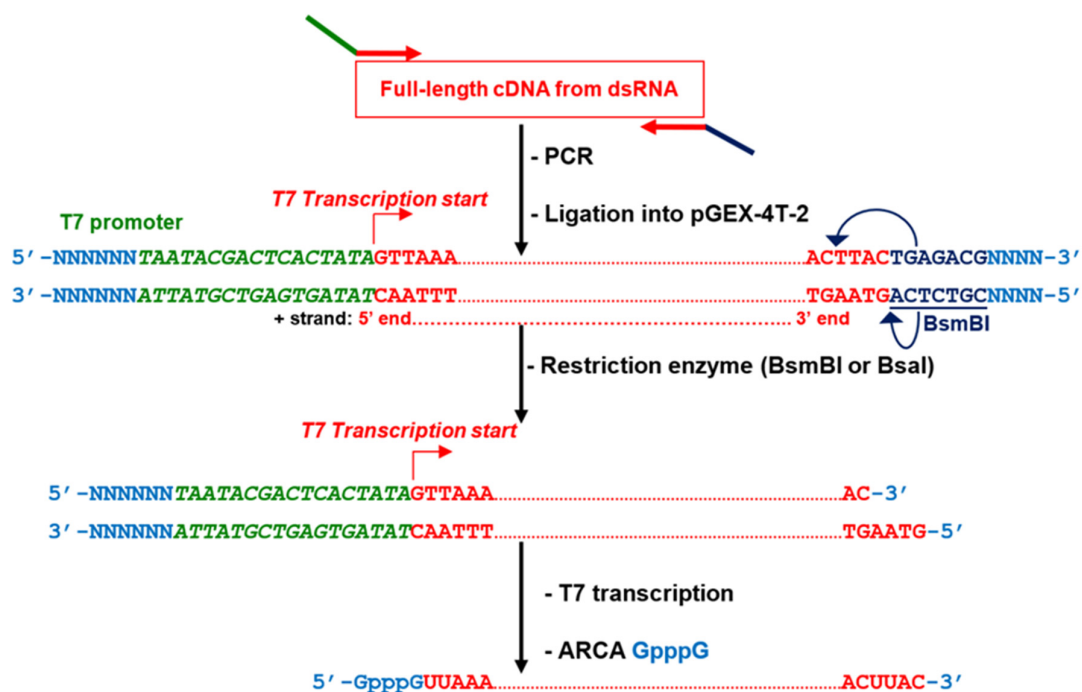


Figure S2. A schematic representation for generating transcripts from restriction enzyme linearised plasmids containing the full-length cDNA copies of BTV genome segments (ARCA: anti-reverse cap analogue).

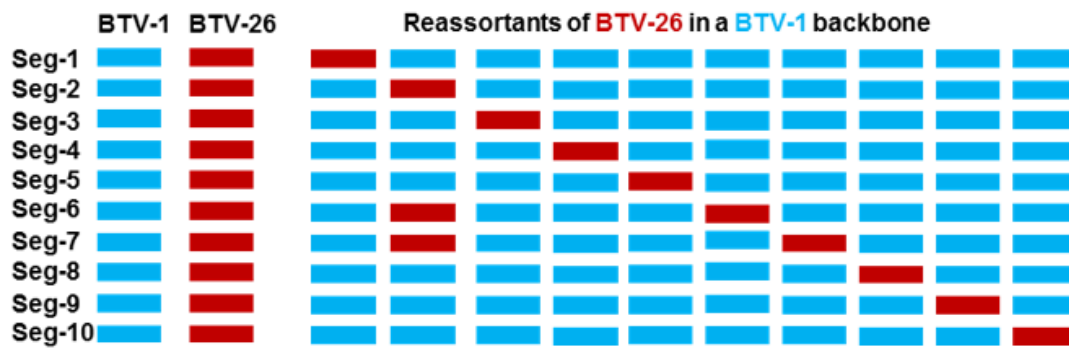


Figure S3. Schematic representation showing RNA combinations used to generate reassortants of BTV-26 in the BTV-1 backbone. The reassortants were designated RGBTV1:X₍₂₆₎ (e.g. RGBTV1:1₍₂₆₎, RGBTV1:5₍₂₆₎), where RGBTV1 refers to the genetic backbone of BTV1-RG_{C7}, and X refers to the specific genome segment of BTV-26 introduced into the reassortant.

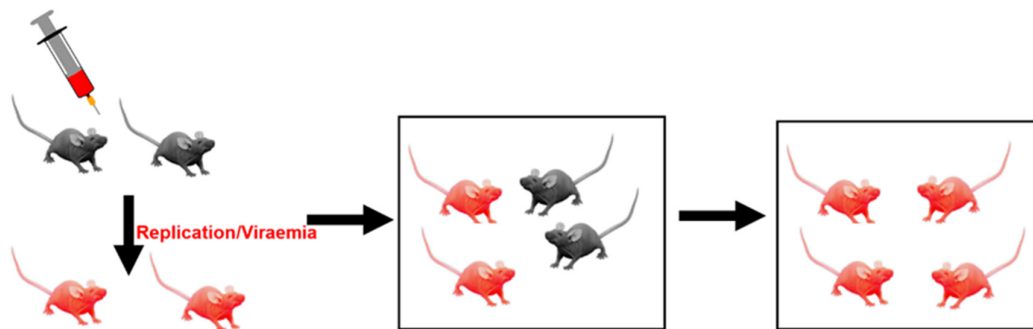


Figure S4. A schematic representation of the horizontal transmission experiment in IFNAR^{-/-} mice. Red-coloured mice indicate where replication of a given BTV was detected by real-time RT-PCR.

Table S1. Primers designed for PCR amplification of full-length cDNAs of genome segments 1-10 of BTV-1. The minimal T7 promoter in the forward primer is shown in bold.

Virus/segment	Primer sequence 5'→3'
BTV1-S1T7FOR	TAATACGACTCACTATAGT TAAAAATGCAATGGTCGCAATC
BTV1-S1REV	GTAAGTGTAATGCGGCGCGTGC
BTV1-S2T7FOR	TAATACGACTCACTATAGT TAAAAATAGTAGCGGATGGATG
BTV1-S2REV	GTAAGTCTAATAGTGCGCGGATC
BTV1-S3T7FOR	TAATACGACTCACTATAGT TAAATTTCCGTAGCCATGGCTG
BTV1-S3REV	GTAAGTGTGTTCCCGCTGCCGC
BTV1-S4T7FOR	TAATACGACTCACTATAGT TAAAAACATGCCTGAGCCACACG
BTV1-S4REV	GTAAGTTGTACATGCCCCCTC
BTV1-S5T7FOR	TAATACGACTCACTATAGT TAAAAAAGTTCTCTAGTTGGC
BTV1-S5REV	GTAAGTTGAAAAGTTCTAGTAGAGTG
BTV1-S6T7FOR	TAATACGACTCACTATAGT TAAAAAGTGCGCCCTTAGCGAA
BTV1-S6REV	GTAAGTGTAAGTGCTTCCCGTCCG
BTV1-S7T7FOR	TAATACGACTCACTATAGT TAAAAATCTATAGAGATGGACA
BTV1-S7REV	GTAAGTGTAATCTAAGAGACGTTTG
BTV1-S8T7FOR	TAATACGACTCACTATAGT TAAAAAATCCTTGAGTCATGGAG
BTV1-S8REV	GTAAGTGTAATAATCCCCCTAACC
BTV1-S9T7FOR	TAATACGACTCACTATAGT TAAAAAATCGCATATGTCAGCTG
BTV1-S9REV	GTAAGTGTAATAATCGCCCTACGTCA
BTV1-S10T7FOR	TAATACGACTCACTATAGT TAAAAAGTGTCGCTGCCATGCT
BTV1-S10REV	GTAAGTGTGTAGCGCCGCATACCCTC