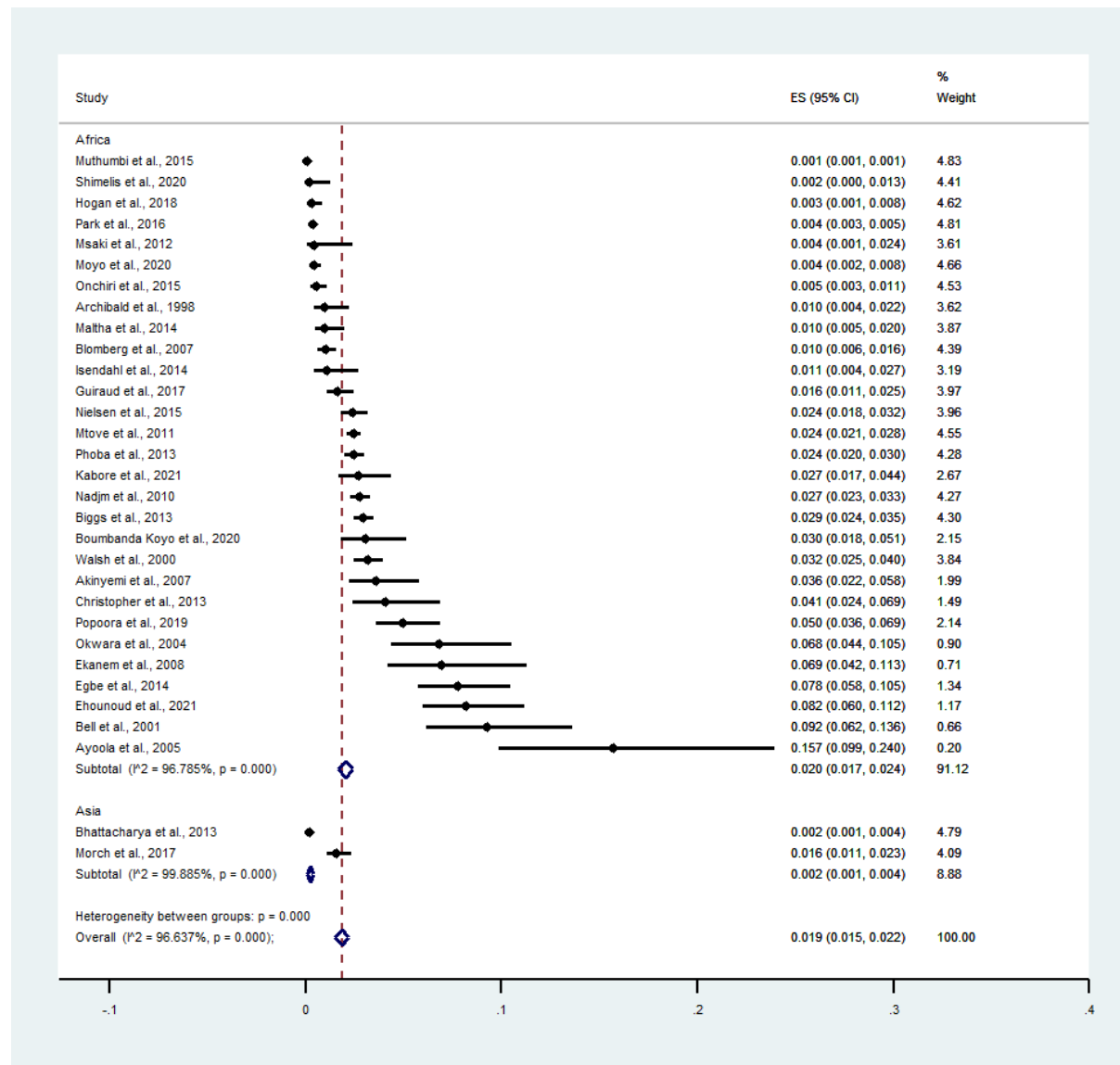
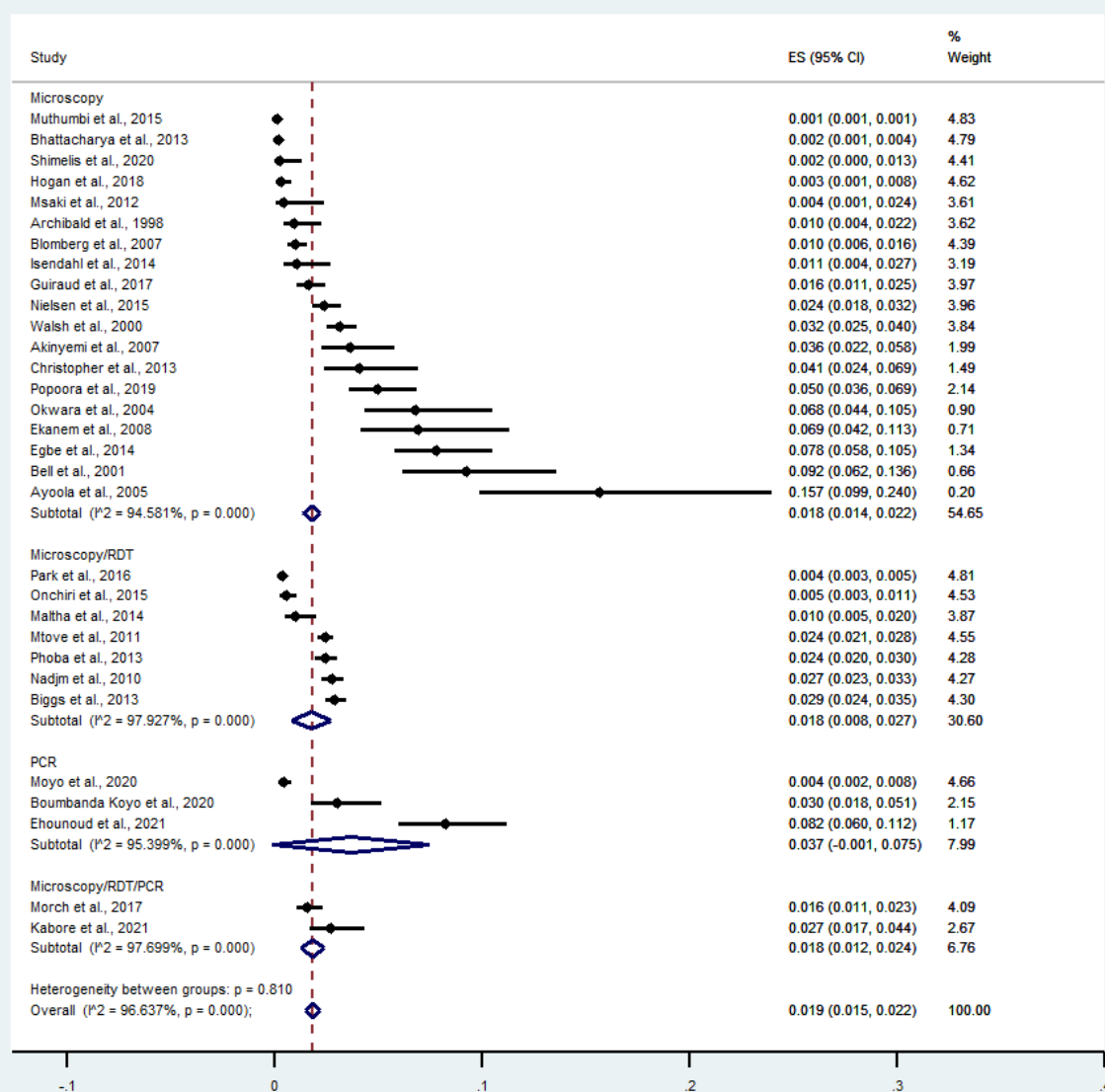


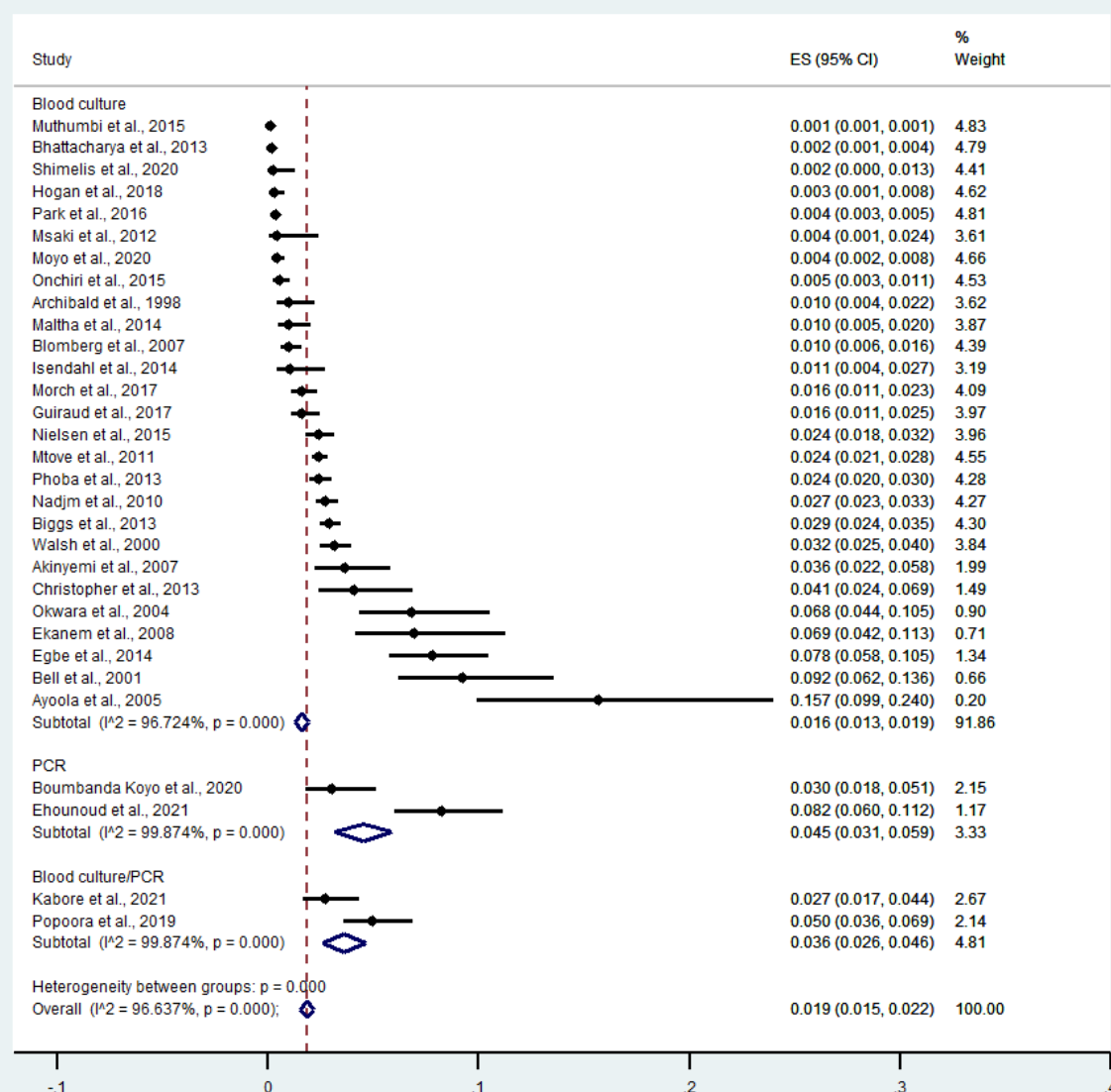
Supplementary Figures



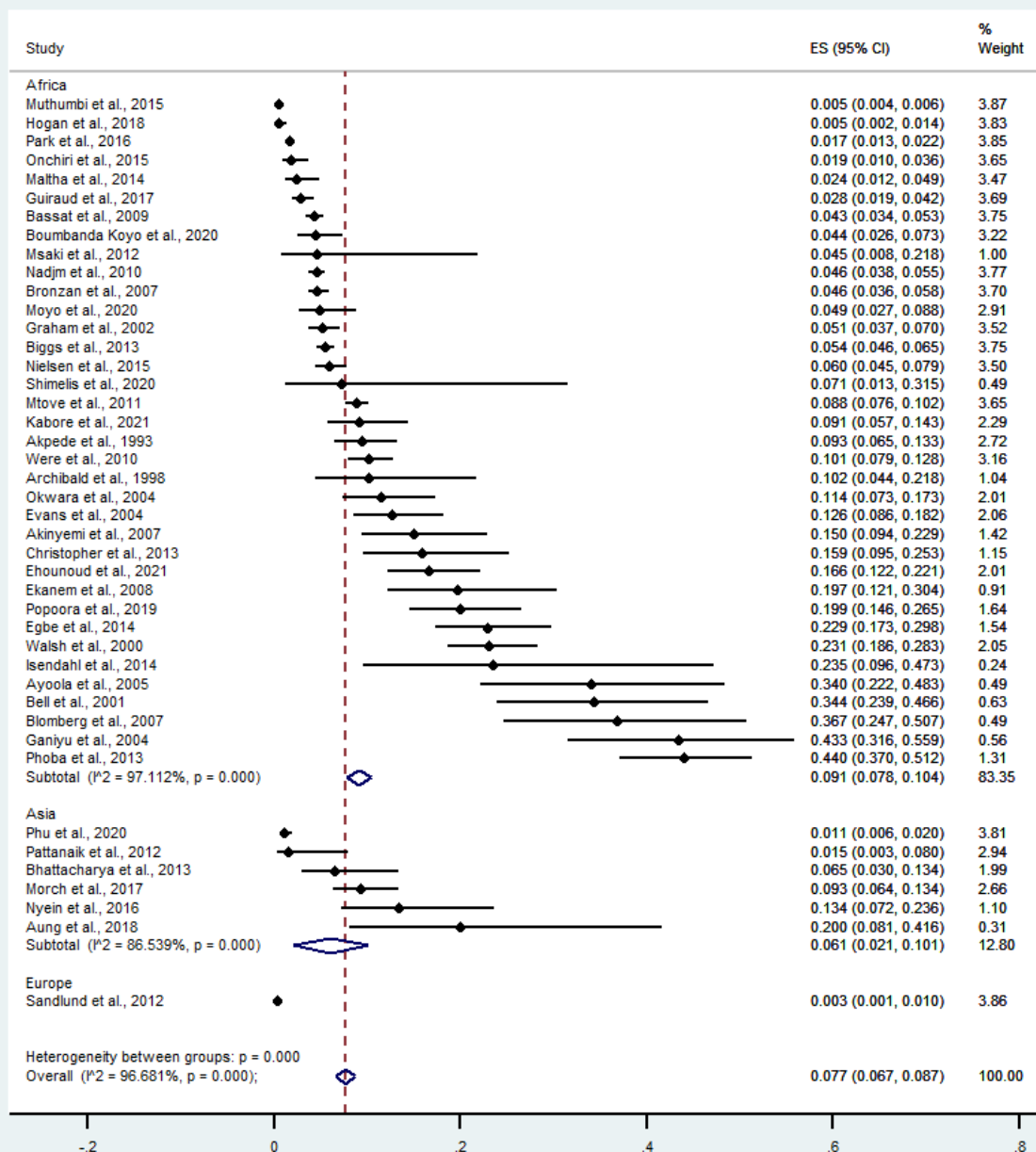
Supplementary Figure S1. A subgroup analysis of the pooled prevalence of malaria and bacteremia co-infection by continents. Abbreviations: ES: prevalence estimate; CI, confidence interval



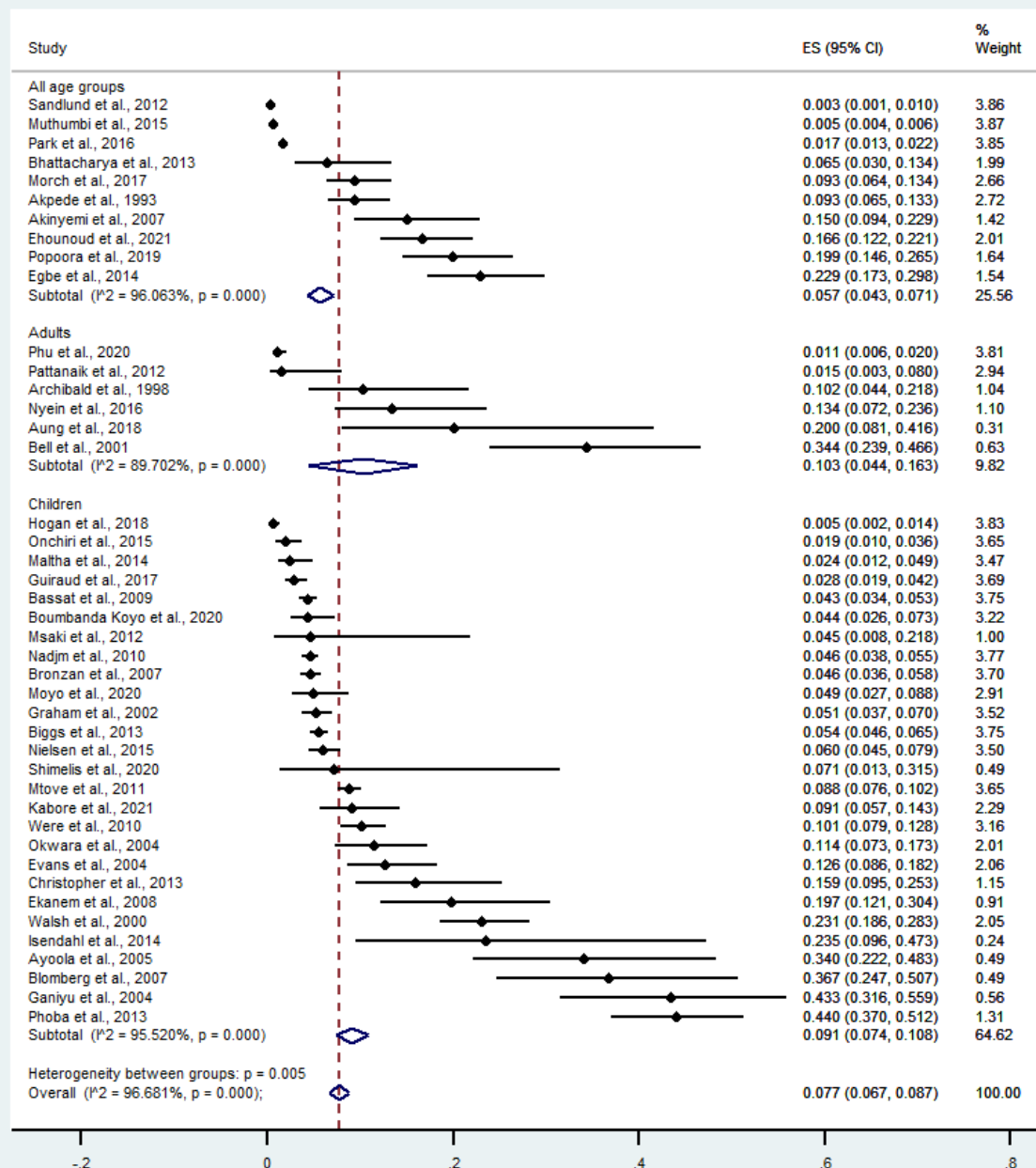
Supplementary Figure S2. A subgroup analysis of the pooled prevalence of malaria and bacteremia co-infection by malaria diagnostic method. Abbreviations: ES: prevalence estimate; CI, confidence interval



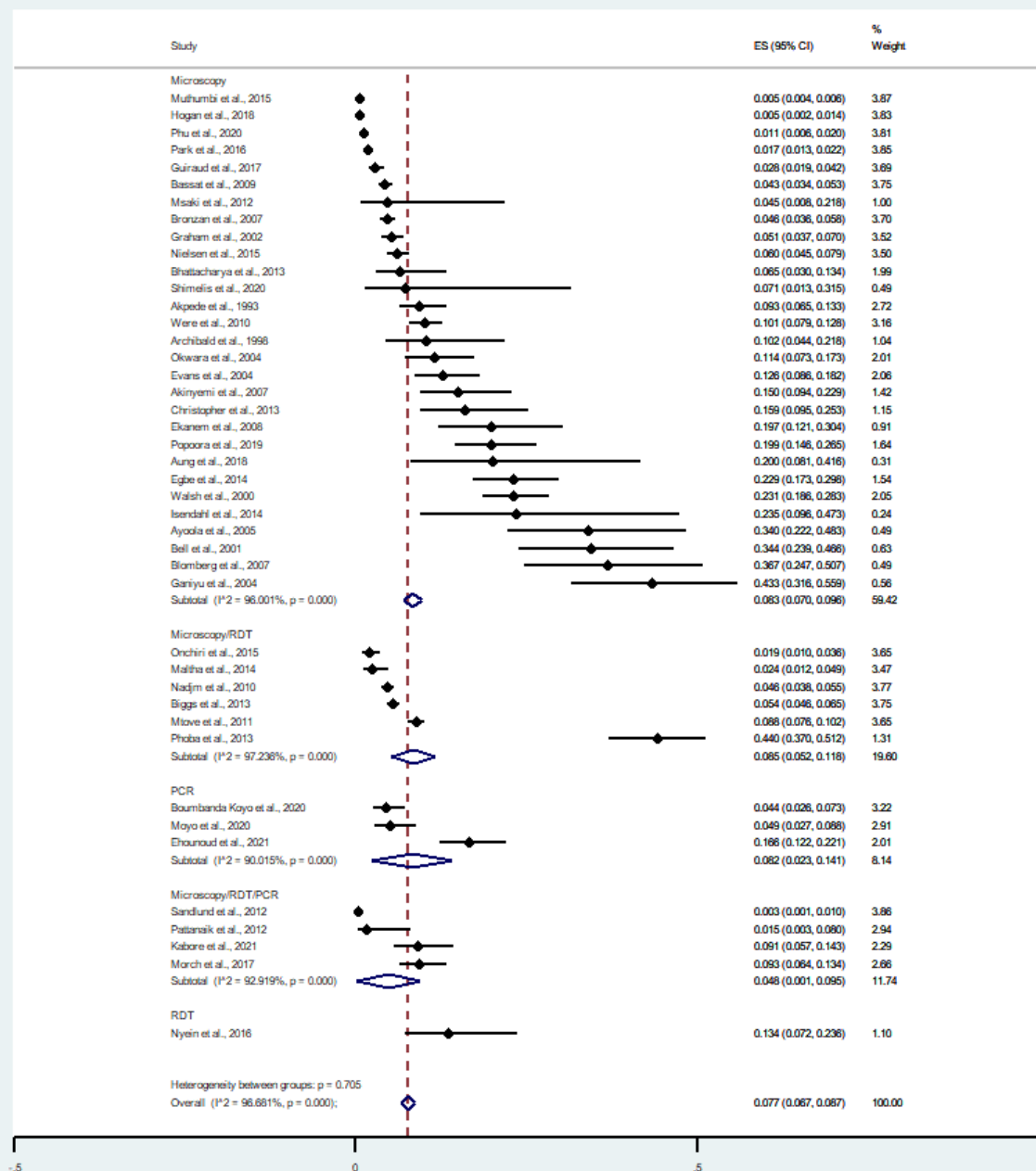
Supplementary Figure S3. A subgroup analysis of the pooled prevalence of malaria and bacteremia co-infection by bacteremia diagnostic method. Abbreviations: ES: prevalence estimate; CI, confidence interval



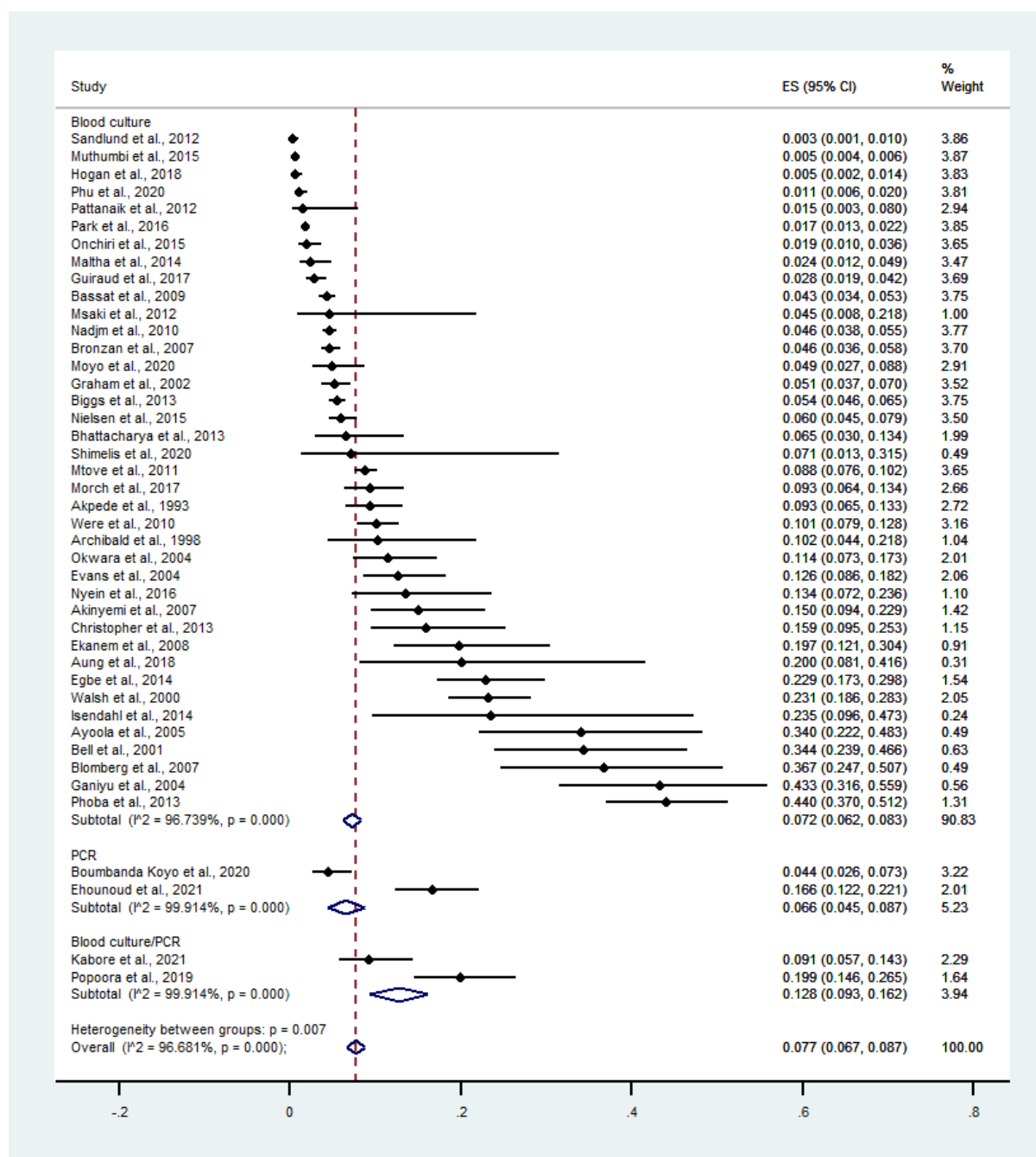
Supplementary Figure S4. A subgroup analysis of the pooled prevalence of bacteremia among patients with malaria by continents. Abbreviations: ES: prevalence estimate; CI, confidence interval



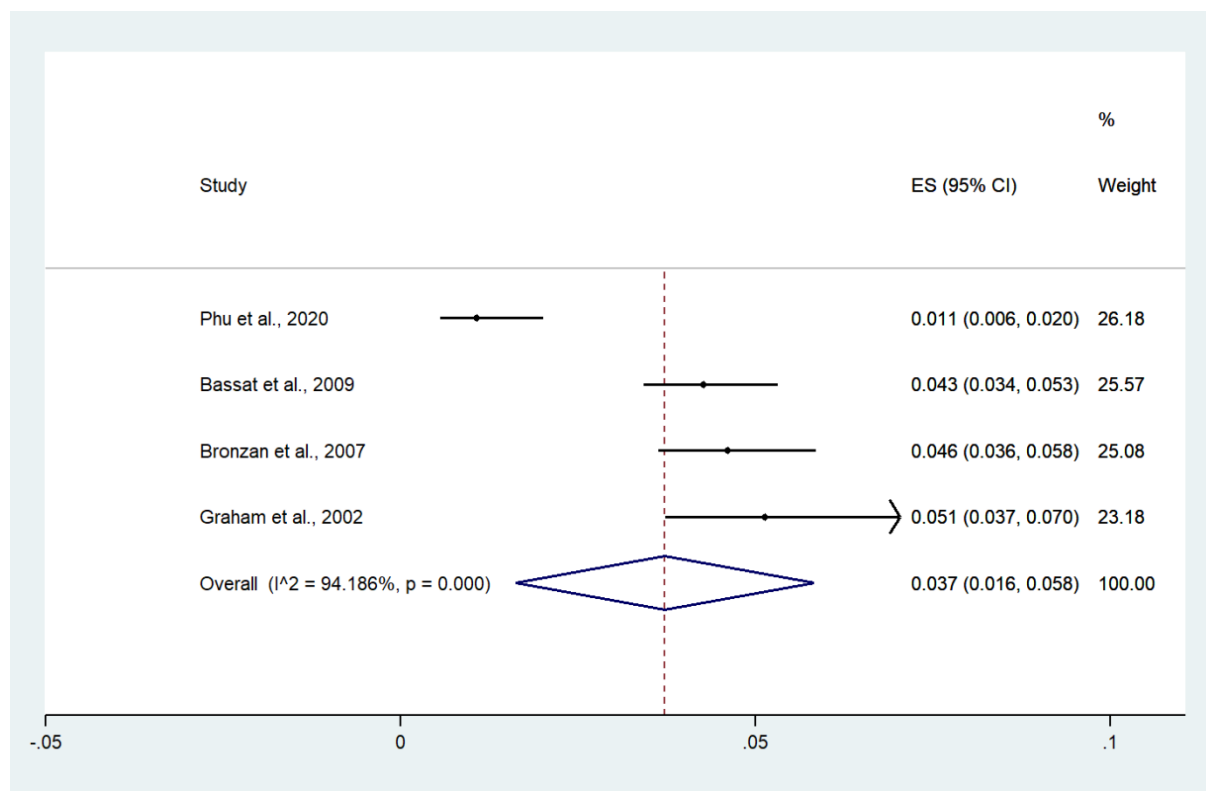
Supplementary Figure S5. A subgroup analysis of the pooled prevalence of bacteremia among patients with malaria by age groups. Abbreviations: ES: prevalence estimate; CI, confidence interval



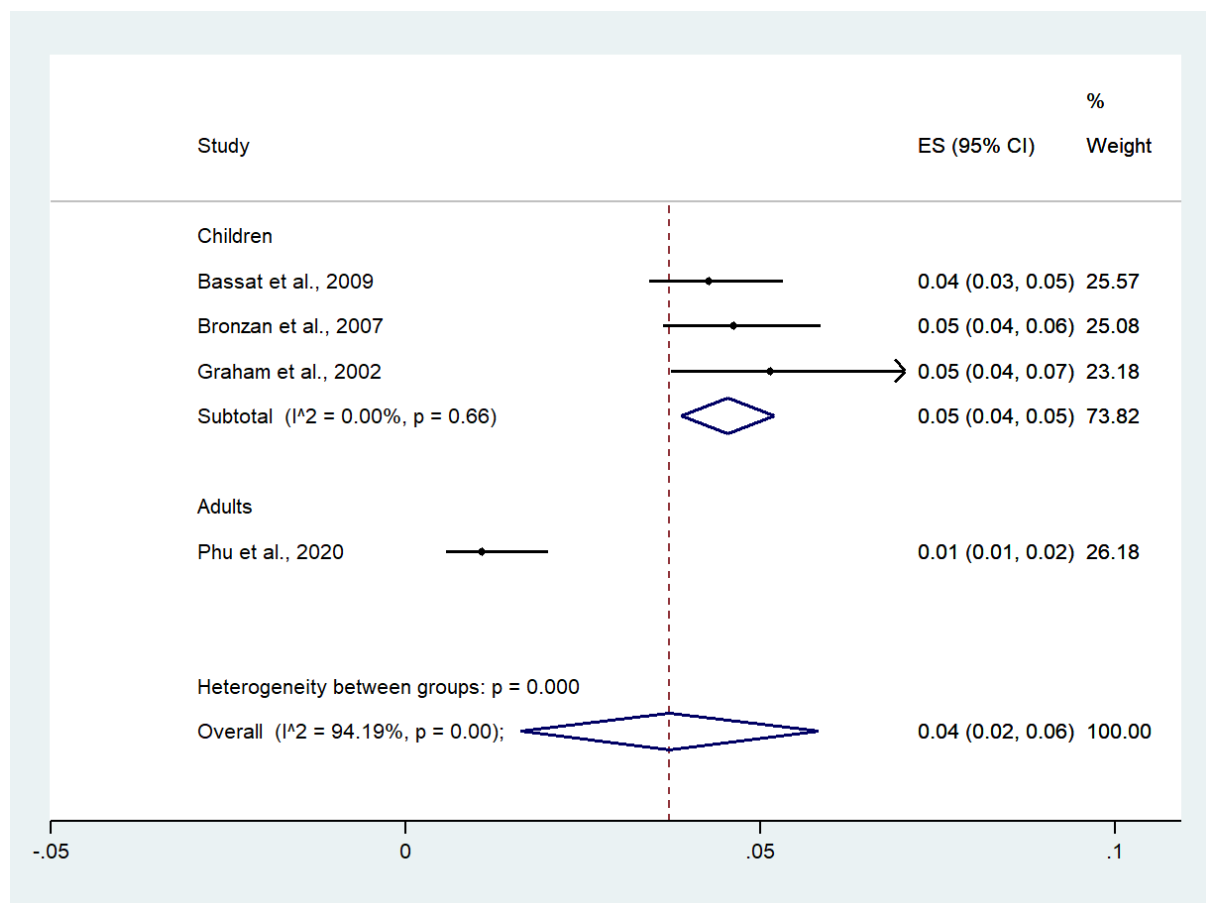
Supplementary Figure S6. A subgroup analysis of the pooled prevalence of bacteremia among patients with malaria by malaria diagnostic method. Abbreviations: ES: prevalence estimate; CI, confidence interval



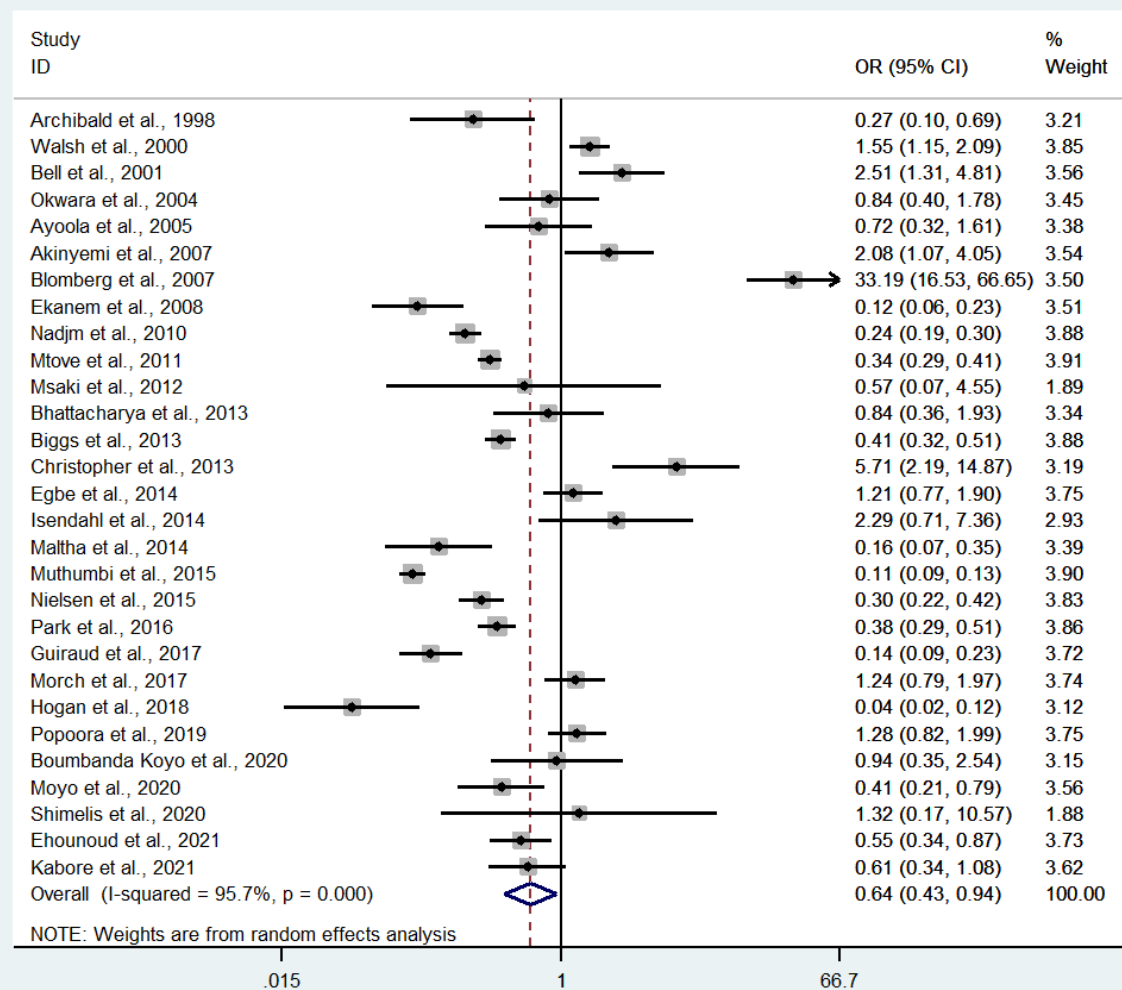
Supplementary Figure S7. A subgroup analysis of the pooled prevalence of bacteremia among patients with malaria by bacteremia diagnostic method. Abbreviations: ES: prevalence estimate; CI, confidence interval



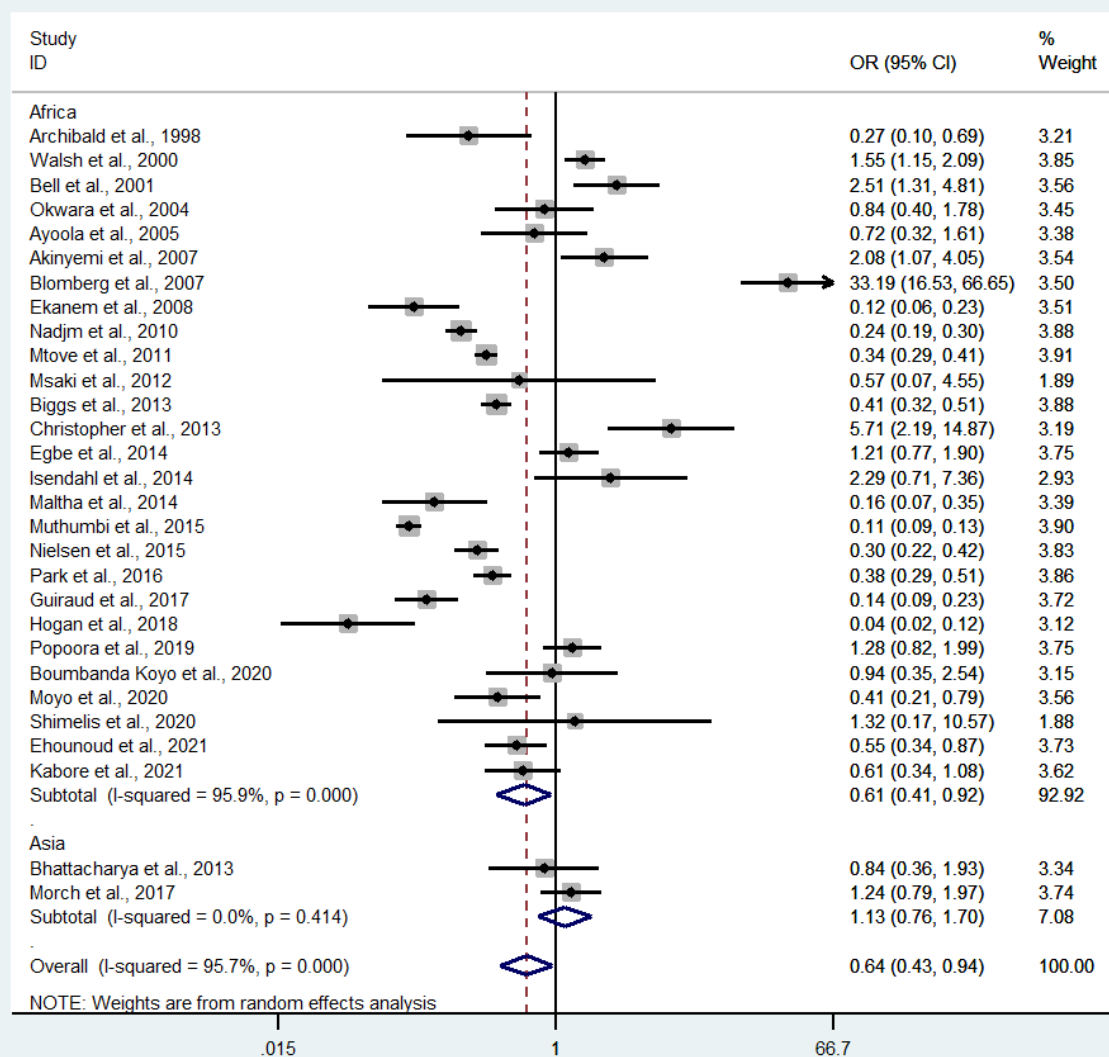
Supplementary Figure S8. The pooled prevalence of bacteremia among patients with severe malaria. Abbreviations: ES: prevalence estimate; CI, confidence interval



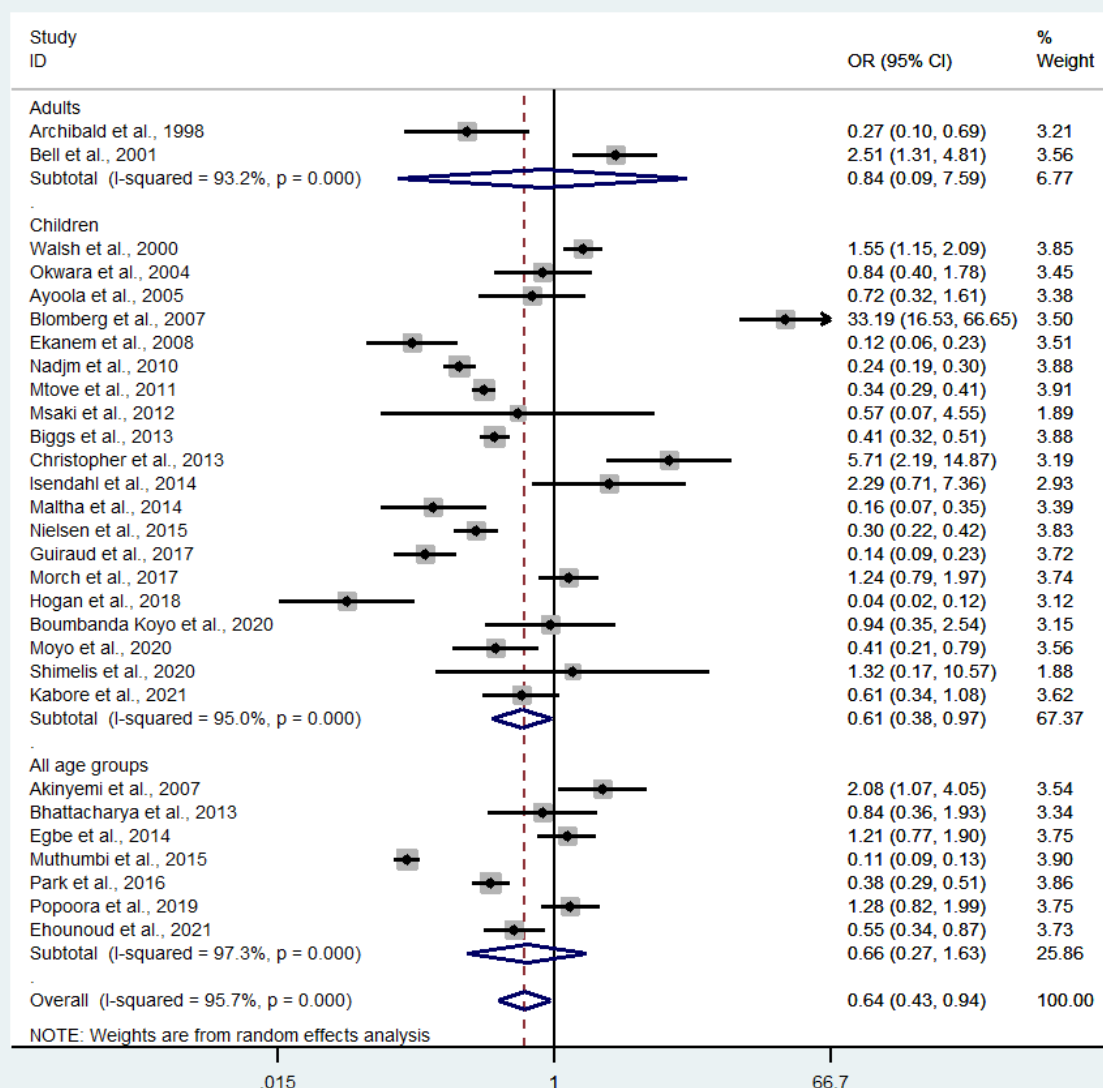
Supplementary Figure S9. The pooled prevalence of bacteremia among patients with severe malaria by age groups. Abbreviations: ES: prevalence estimate; CI, confidence interval



Supplementary Figure S10. A probability of co-infection. Abbreviations: OR: odds ratio; CI, confidence interval

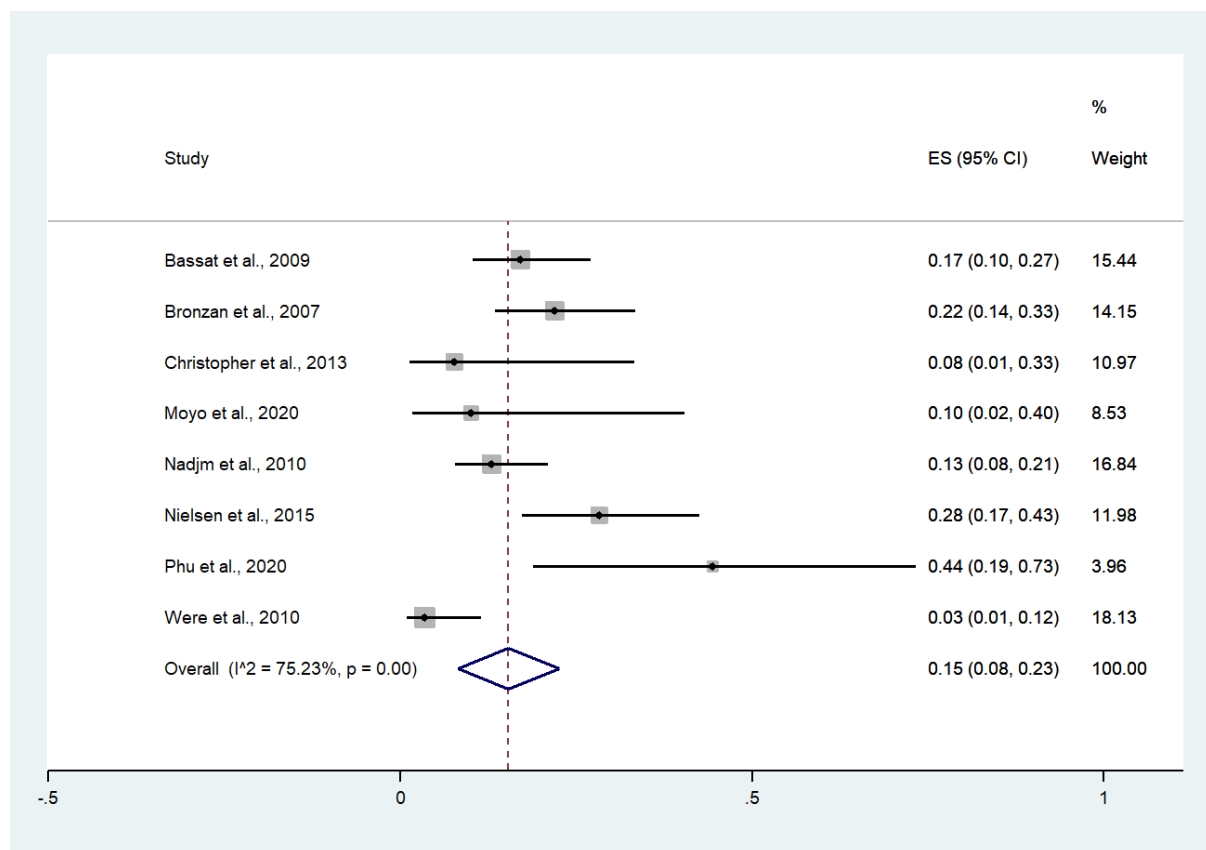


Supplementary Figure S11. A probability of co-infection by continents. Abbreviations: OR: odds ratio; CI, confidence interval

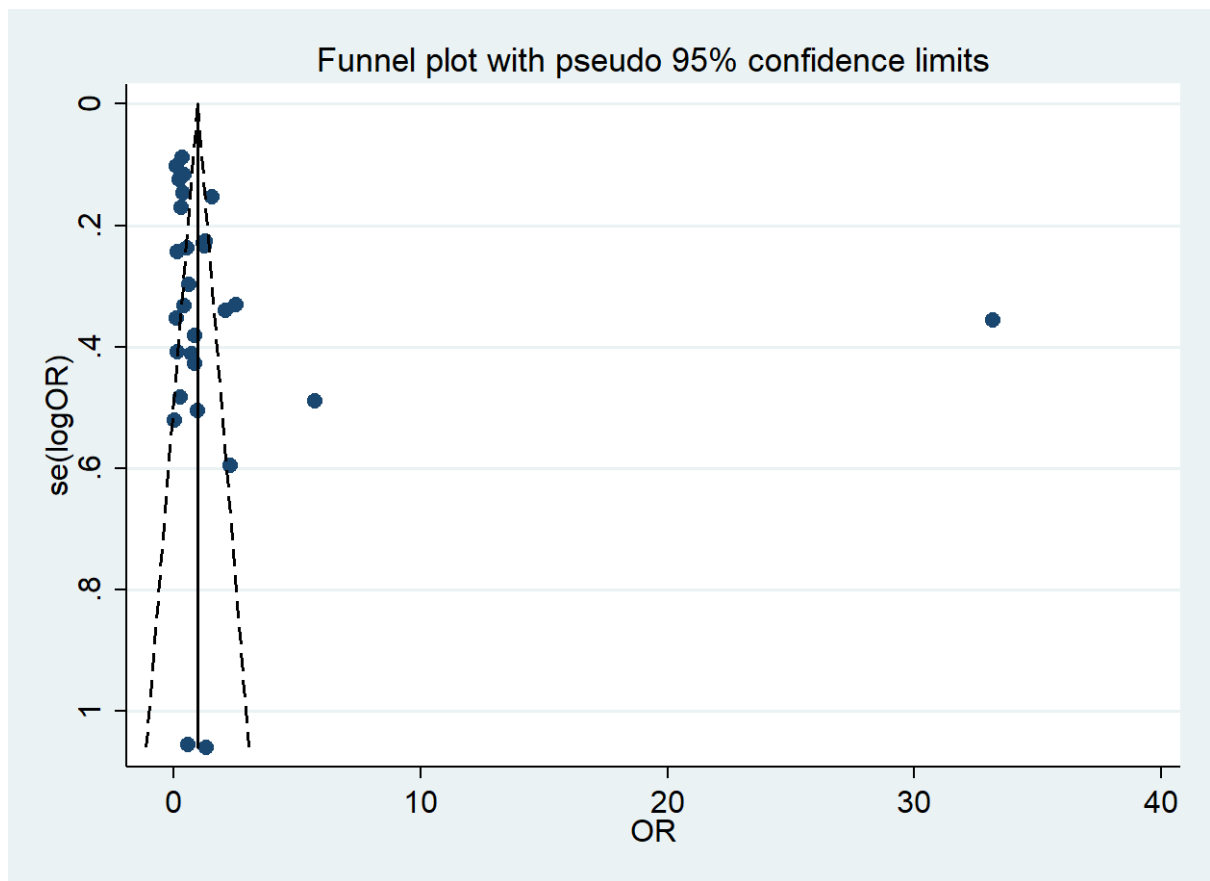


Supplementary Figure S12. A probability of co-infection by age groups. Abbreviations:

OR: odds ratio; CI, confidence interval



Supplementary Figure S13. The pooled prevalence of deaths among patients with co-infection. Abbreviations: ES: prevalence estimate; CI, confidence interval



Supplementary Figure S14. A funnel plot of the probability of co-infection.