

Supplementary Materials: Recombinant oxidase from *Armil-*
laria tabescens as a potential tool for aflatoxin B1 degradation
in contaminated cereal grain

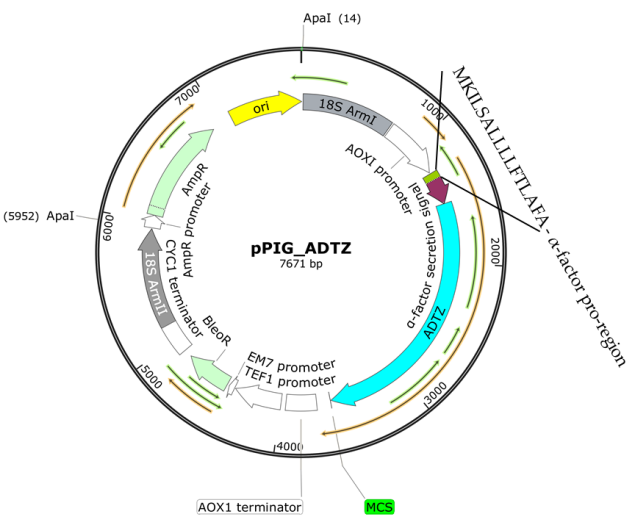


Figure S1. Map of the pPIGa-1-AFO plasmid

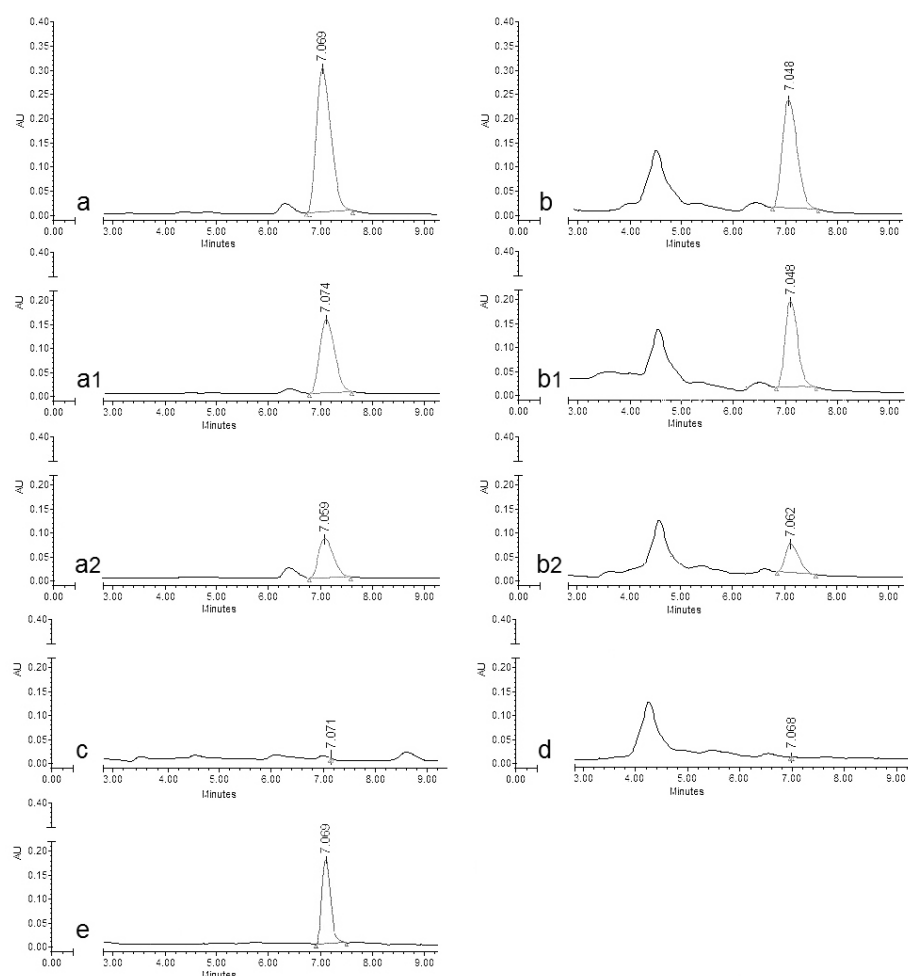


Figure S2. Chromatograms illustrating reduction of AFB1 content in extracts of wheat (**a1**, **a2**) and corn (**b1**, **b2**) grain inoculated with a toxigenic *A. flavus* (**a**, **b**) resulted from 24- (**a1**, **b1**) and 48-hour (**a2**, **b2**) grain exposure to recombinant AFO at pH 6.0 and 30°C. Chromatograms (**c**) and (**d**) show results of HPLC-analyses of extracts non-inoculated wheat and corn grain, respectively, as well as commercial AFB1 standard (**e**) under the same conditions.

6
7
8
9
10