

Supplementary Materials

Development of a Monoclonal scFv against Cytotoxin to Neutralize Cytolytic Activity Induced by *Naja atra* Venom on Myoblast C2C12 Cells

Chien-Chun Liu, Cho-Ju Wu, Tsai-Ying Chou, Geng-Wang Liaw, Yung-Chin Hsiao, Lichieh Julie Chu, Chi-Hsin Lee, Po-Jung Wang, Cheng-Hsien Hsieh, Chun-Kuei Chen and Jau-Song Yu

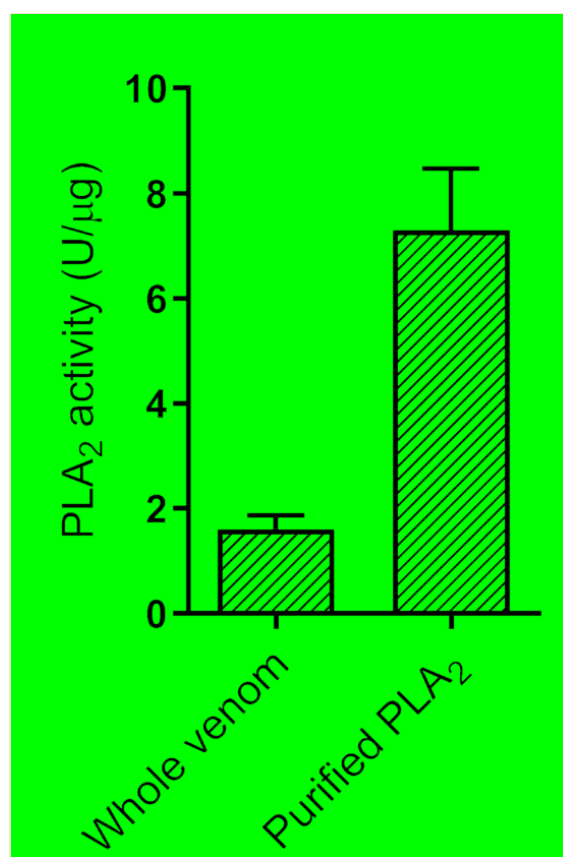


Figure S1. Enzymatic activity of PLA₂ purified from *N. atra* venom. PLA₂ activity of was determined using EnzChek™ Phospholipase A₂ assay kits (Thermo Fisher, MA, USA). Each bar represents the mean ± SD of triplicate determinations.

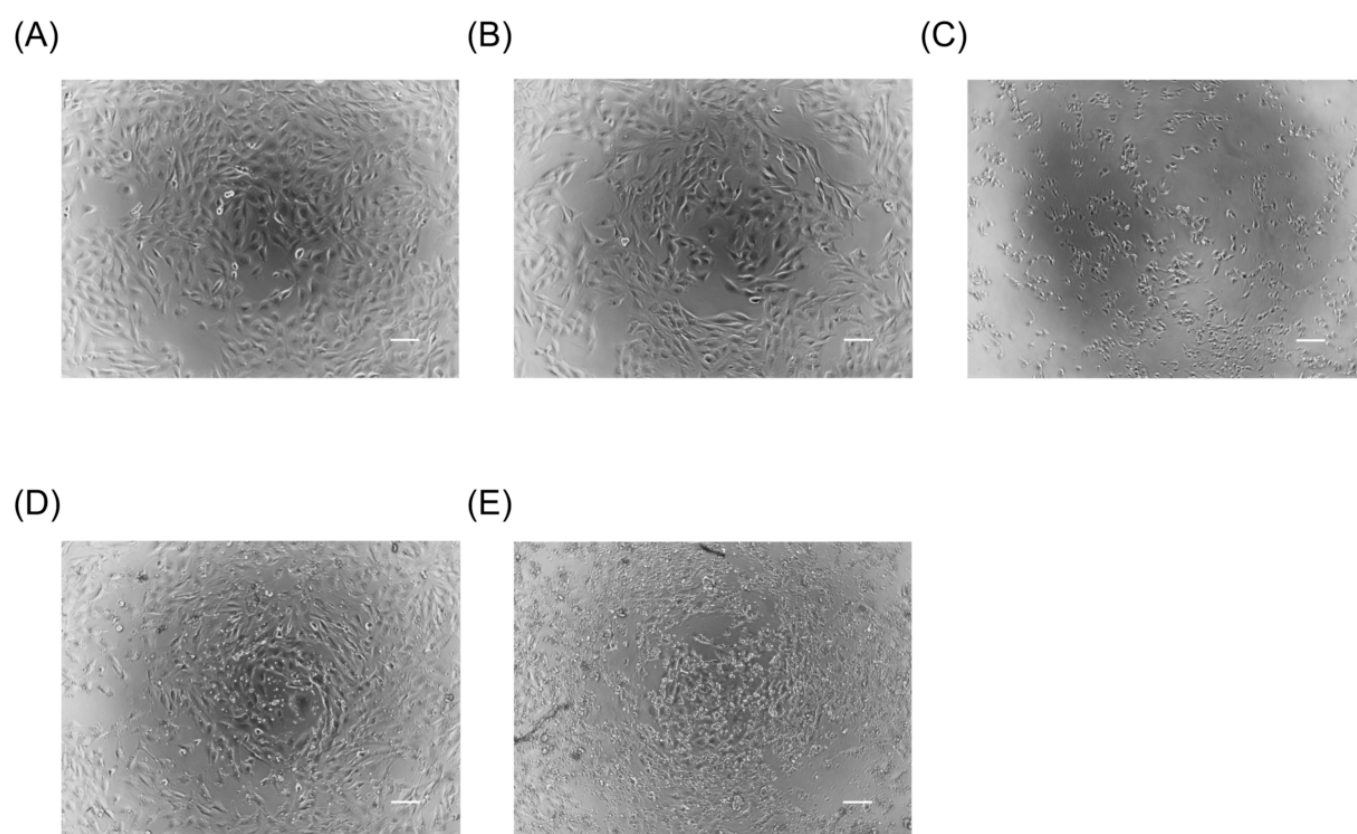


Figure S2. Morphology of C2C12 cells treated with proteins from *N. atra* venom. (A) NTX, (B) PLA₂, (C) CTX, (D) CRISP, and (E) SVMP. .

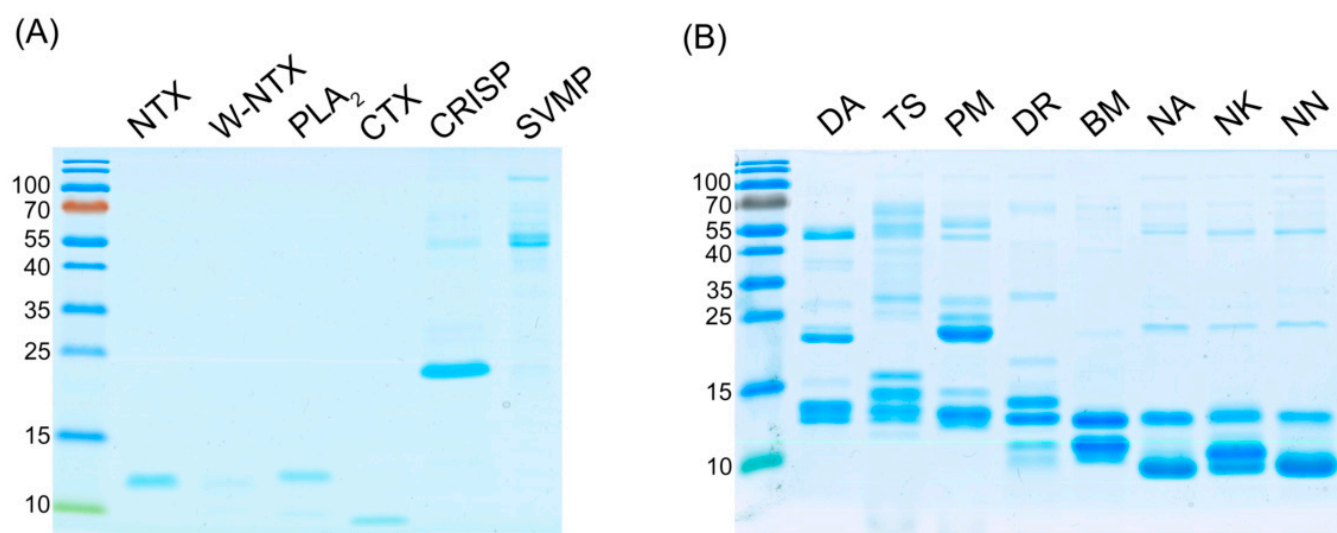


Figure S3. Protein profiles of snake venom. SDS-PAGE analyses of (A) six components of *N. atra* venom and (B) venom from eight different species of snakes.