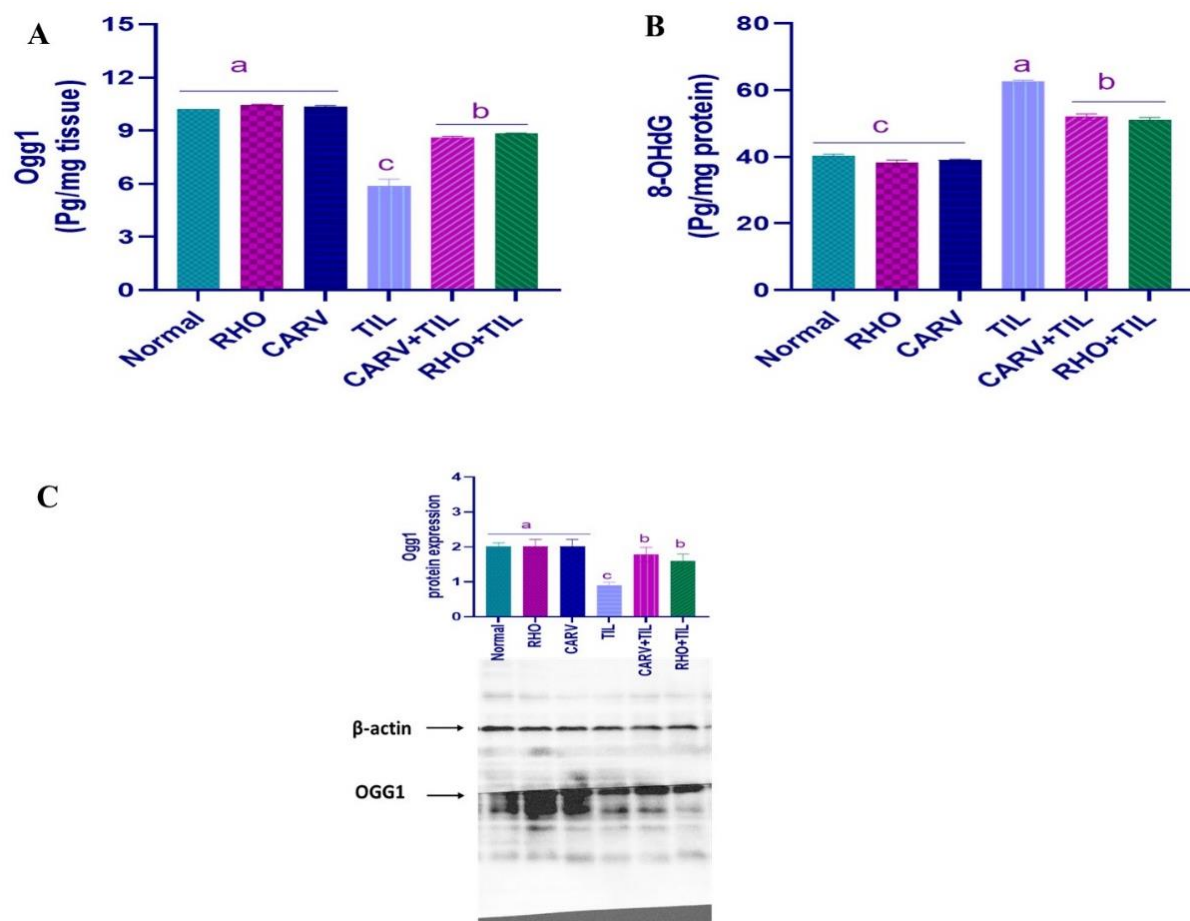


Figure S1. HPLC peaks.

Table S1. Rhodiola Rosea Extract (compound names).

|   | Signal Name | Reten. Time [min] | Response  | Amount [mg/l] | Compound Name           |
|---|-------------|-------------------|-----------|---------------|-------------------------|
| 1 | Channel 1   | 1.848             | 176.123   | 0.003710      | Gallic Acid             |
| 2 | Channel 1   | 3.293             | 450.865   | 0.000010      | Trans Ferulic Acid      |
| 3 | Channel 1   | 4.327             | 646.512   | 0.002021      | Para Amino Benzoic Acid |
| 4 | Channel 1   | 8.023             | 2493.633  | 0.105928      | Vanillic Acid           |
| 5 | Channel 1   | 8.210             | 1019.886  | 0.016094      | Syringic Acid           |
| 6 | Channel 1   | 9.195             | 4047.686  | 0.000059      | Apeinine                |
| 7 | Channel 1   | 15.742            | 22727.052 | 2.035400      | Rutin                   |
| 8 | Channel 1   | 21.527            | 47287.849 | 27.692959     | Sylimarine              |
|   |             | All Signals Total |           | 29.856171     |                         |



**Figure S2.** Quantification of protein content of (A) Ogg1, (B) 8-OHdG, and (C) Western blotting and densitometric quantification of the protein expression of OGG1 following different treatment. The values represent means  $\pm$  standard deviations for six separate rats per treatment. a,b,c Values with different letters are statistically different at  $p < 0.05$ .