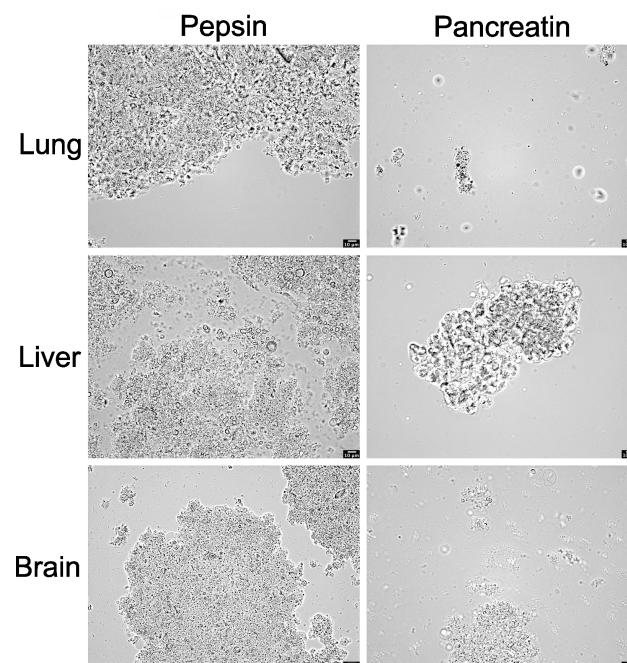


**Figure S1.** Enzymatic digestion of porcine lung, liver and brain samples using proteinase K (Prot. K). The images depict homogenized lung, liver and brain tissue in the digestion solution before and after incubation in proteinase K, as microscopic examination was not feasible.



**Figure S2.** Enzymatic digestion of lung, liver and brain tissue using pepsin and pancreatin. The kidney homogenates were incubated for 4 h in a 2 mg/mL pepsin solution, followed by an additional 24.5 h in a 2 mg/mL pancreatin solution at 37 °C. Representative microscopic images show the progress of digestion after incubation in pepsin and after subsequent incubation in pancreatin.