

Supplemental Materials

Table S1. Primers' sequences for telomere genes and reference genes.

Gene	Forward primers (5'–3')	Reverse primers (5'–3')
Telo	CGGTTTGTTTGGGTTTGGGTTT	GGCTTGCCTTACCCTTACCCT
	GGGTTTGGGTTTGGGTT	TACCCTTACCCTTACCCT
m36B4	ACTGGTCTAGGACCCGAGAAG	TCAATGGTGCCTCTGGAGATT

Table S2. Primers' sequences for various genes.

Gene	Forward primers (5'–3')	Reverse primers (5'–3')
<i>Cdk4</i>	ATGGCTGCCACTCGATATGAA	TGCTCCTCCATTAGGAACTCTC
<i>Cdk6</i>	TCTCACAGAGTAGTGCATCGT	CGAGGTAAGGGCCATCTGAAAA
<i>Ccnd1</i>	GCGTACCCTGACACCAATCTC	CTCCTCTTCGCACTTCTGCTC
<i>Rb1</i>	TTGGAGTCCGATTGTATTACCGT	AGCACAGGCCAGTAAAGACAT
<i>Trf1</i>	CAGCAGTCTACAGAACTGAACC	ACTGAAATCTGATGGAGCACG
<i>Trf2</i>	GGTGCTCAAGTTCTATTTCCACG	CAAGCAACGCCTGCATGAT
<i>Pot1</i>	AGCCTCCGTATGTTAGCAAAGG	CCTGTGGAAGCGAACAATGT
<i>Rap1</i>	ATGCGTGAGTACAAGCTAGTAGT	AATCTACCTCGACTTGCTTTCTG
<i>Tin2</i>	TGCCCTGAAGCATCACTTCC	GGCAACTAGAAAGGATTCCCC
<i>Tpp1</i>	GAGTCTCACTTTTGCGCTGAA	CTCCAGGGTTAGGTACTTTCCA
<i>Tert</i>	GCACTTTGGTTGCCCAATG	GCACGTTTCTCTCGTTGCG
<i>c-Myc</i>	ATGCCCCTCAACGTGAACTTC	GTCGCAGATGAAATAGGGCTG
<i>Max</i>	CAAGCGGGCTCACCATAATG	TGTTGCTTTGTCTAGGATTTGGG
<i>Stat3</i>	CACCTTGATTGAGAGTCAAGAC	AGGAATCGGCTATATTGCTGGT
<i>C-jun</i>	TTCCTCCAGTCCGAGAGCG	TGAGAAGGTCCGAGTTCTTGG
<i>Foxa1</i>	ACATTCAAGCGCAGCTACCC	TGCTGGTTCTGGCGGTAATAG
<i>Esr1</i>	GACCCTTCACACCAAAGCCTC	TGTCCACGTATACCTCGCCC
<i>Ctcf</i>	GATCCTACCCTTCTCCAGATGAA	GTACCGTCACAGGAACAGGT
<i>actin</i>	CGTGCGTGACATCAAAGAGAAG	CAAGAAGGAAGGCTGGAAAAGA

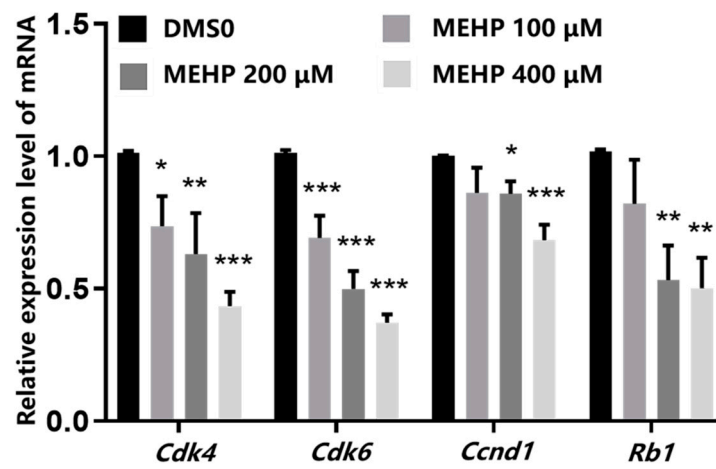


Figure S1. Changes in the mRNA expression levels of *Cdk4*, *Cdk6*, *Ccnd1*, and *Rb1* in GC-1 cells after 48 h of MEHP treatment were analysed by RT-qPCR. *Beta-actin* (β -*actin*) was used as the housekeeper gene. The results are presented as the mean \pm SD, $n = 3$. * $P < 0.05$, ** $P < 0.01$, *** $P < 0.001$, compared with the solvent control (DMSO) group.